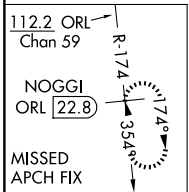
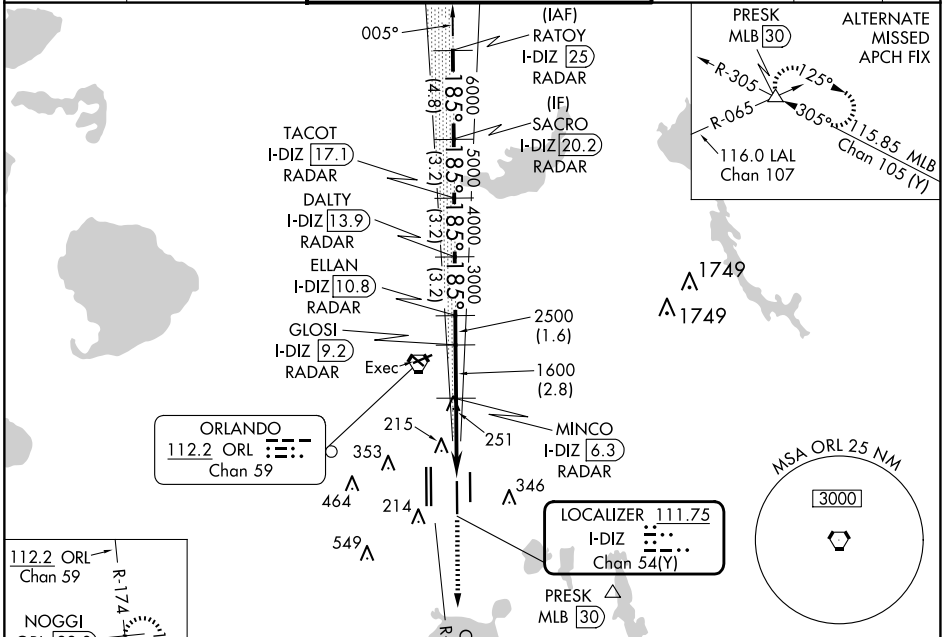


LOC/DME I-DIZ 111.75 Chan 54(Y)	APP CRS 185°	Rwy Idg 10000 TDZE 90 Apt Elev 96
---	------------------------	--

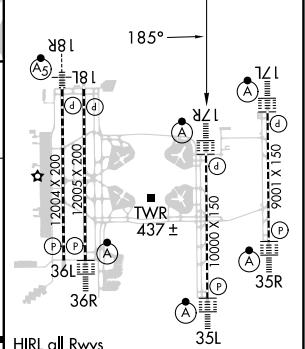
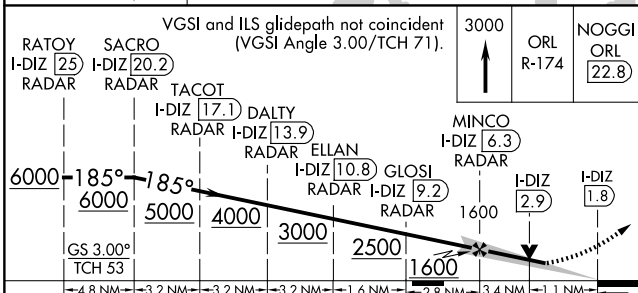
ILS or LOC RWY 17R

ORLANDO INTL (MCO)

RADAR required for procedure entry. DME or RADAR required.		ALSF-2 	MISSED APPROACH: Climb to 3000 on ORL VORTAC R-174 to NOGGI/ ORL 22.8 DME and hold.
D-ATIS ARR 121.25 DEP 120.525		ORLANDO APP CON 124.8 307.0	ORLANDO TOWER 118.45 253.5 (Rwys 17L-35R, 17R-35L) 124.3 253.5 (Rwys 18L-36R, 18R-36L)
GND CON 126.4 (East) 121.8 (West)		CLNC DEL 134.7 341.7	CPDLC



ELEV 96	TDZE 90
---------	---------



CATEGORY	A	B	C	D
S-ILS 17R	290/18 200 (200-1/2)			
S-LOC 17R	520/24 430 (500-1/2)	520/40 430 (500-3/4)		
CIRCLING	740-1 644 (700-1)	740-1 3/4 644 (700-1 3/4)	740-2 644 (700-2)	

HIRL all Rwys REIL Rwy 36L TDZ/CL Rwys 17L/R, 18R, 35L/R and 36R					
FAF to MAP 4.5 NM					
Knots	60	90	120	150	180
Min:Sec	4:30	3:00	2:15	1:48	1:30

SE-3, 23 JAN 2025 to 20 FEB 2025

SE-3, 23 JAN 2025 to 20 FEB 2025