

LOC/DME I-OJP 110.7 Chan 44	APP CRS 005°	Rwy Idg 11601 TDZE 92 Apt Elev 96
-------------------------------------------------	------------------------	--------------------------------------------------------------

ILS or LOC RWY 36R

ORLANDO INTL (MCO)

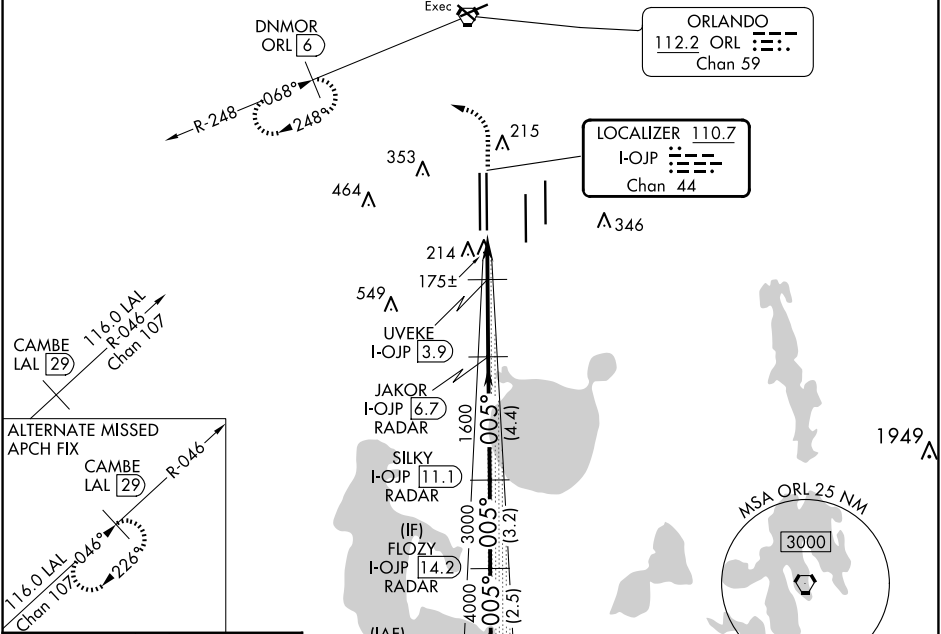
RADAR required for procedure entry. DME or RADAR required.

ALSf-2
A

MISSED APPROACH: Climb to 500 then climbing left turn to 3000 on heading 309° and ORL VORTAC R-248 to DNMR/ORL 6 DME and hold, continue climb-in-hold to 3000.

Simultaneous approach authorized.

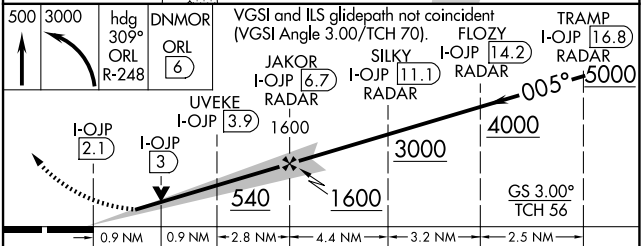
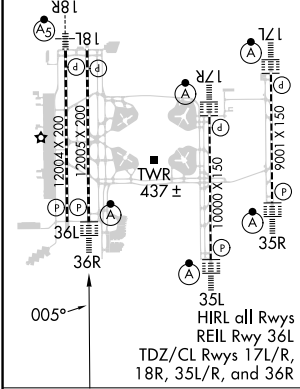
D-ATIS ARR 121.25 DEP 120.525	ORLANDO APP CON 124.8 307.0	ORLANDO TOWER 118.45 253.5 (Rwys 17L-35R, 17R-35L) 124.3 253.5 (Rwys 18L-36R, 18R-36L)	GND CON 126.4 (East) 121.8 (West)	CLNC DEL 134.7 341.7	CPDLC
---------------------------------------------------	---------------------------------------	------------------------------------------------------------------------------------------------------------	-------------------------------------------------------	------------------------------------------	-------



SE-3, 23 JAN 2025 to 20 FEB 2025

SE-3, 23 JAN 2025 to 20 FEB 2025

ELEV 96	D	TDZE 92
---------	---	---------



CATEGORY	A	B	C	D
S-ILS 36R	292/18 200 (200-½)			
S-LOC 36R	540/24	448 (500-½)	540/45	448 (500-¾)
<input checked="" type="checkbox"/> CIRCLING	740-1	644 (700-1)	740-1¾ 644 (700-1¾)	740-2 644 (700-2)
UVEKE FIX MINIMUMS (DME REQUIRED)				
S-LOC 36R	440/24	348 (400-½)	440/30	348 (400-¾)
<input checked="" type="checkbox"/> CIRCLING	740-1	644 (700-1)	740-1¾ 644 (700-1¾)	740-2 644 (700-2)