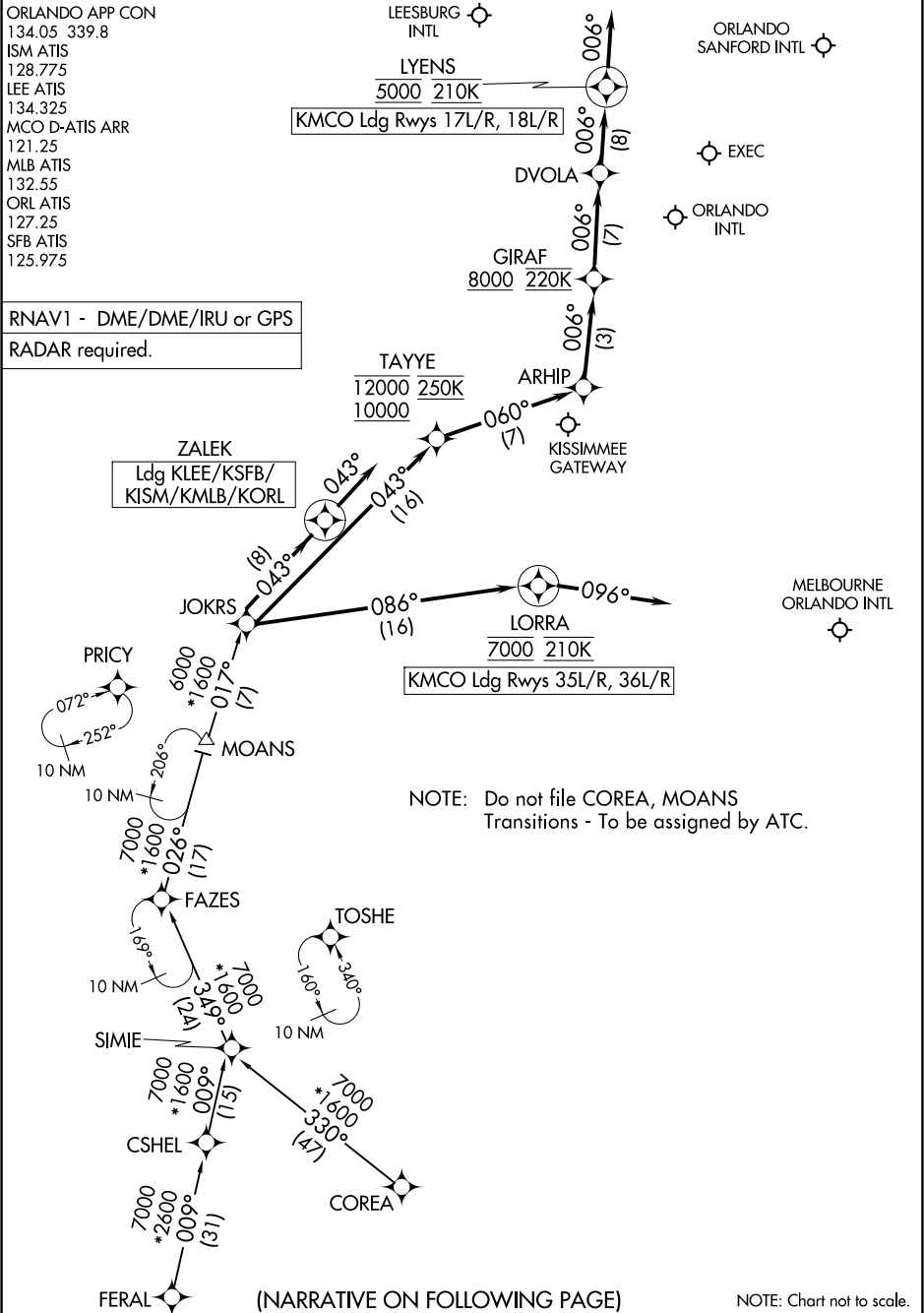


# JOKRS THREE ARRIVAL (RNAV)

ORLANDO, FLORIDA

ORLANDO APP CON  
 134.05 339.8  
 ISM ATIS  
 128.775  
 LEE ATIS  
 134.325  
 MCO D-ATIS ARR  
 121.25  
 MLB ATIS  
 132.55  
 ORL ATIS  
 127.25  
 SFB ATIS  
 125.975

RNAV1 - DME/DME/IRU or GPS  
 RADAR required.



NOTE: Do not file COREA, MOANS Transitions - To be assigned by ATC.

SE-3, 23 JAN 2025 to 20 FEB 2025

SE-3, 23 JAN 2025 to 20 FEB 2025

# JOKRS THREE ARRIVAL (RNAV)

(JOKRS.JOKRS3) 19MAY22

ORLANDO, FLORIDA

(NARRATIVE ON FOLLOWING PAGE)

NOTE: Chart not to scale.

ARRIVAL ROUTE DESCRIPTION

COREA TRANSITION (COREA.JOKRS3)

CSHEL TRANSITION (CSHEL.JOKRS3)

FAZES TRANSITION (FAZES.JOKRS3)

FERAL TRANSITION (FERAL.JOKRS3)

MOANS TRANSITION (MOANS.JOKRS3)

LANDING KMCO RUNWAYS 17L/R, 18L/R: From JOKRS on track 043° to cross TAYYE between 10000 and 12000 and at 250K, then on track 060° to ARHIP, then on track 006° to cross GIRAF at or above 8000 and at 220K, then on track 006° to DVOLA, then on track 006° to cross LYENS at 5000 and at 210K, then on track 006°. Expect RADAR vectors to final approach course.

LANDING KMCO RUNWAYS 35L/R, 36L/R: From JOKRS on track 086° to cross LORRA at 7000 and at 210K, then on heading 096°. Expect RADAR vectors to final approach course.

LANDING KLEE/KSFB/KISM/KMLB/KORL: From JOKRS on track 043° to ZALEK, then on heading 043°. Expect RADAR vectors to final approach course.

SE-3, 23 JAN 2025 to 20 FEB 2025

SE-3, 23 JAN 2025 to 20 FEB 2025