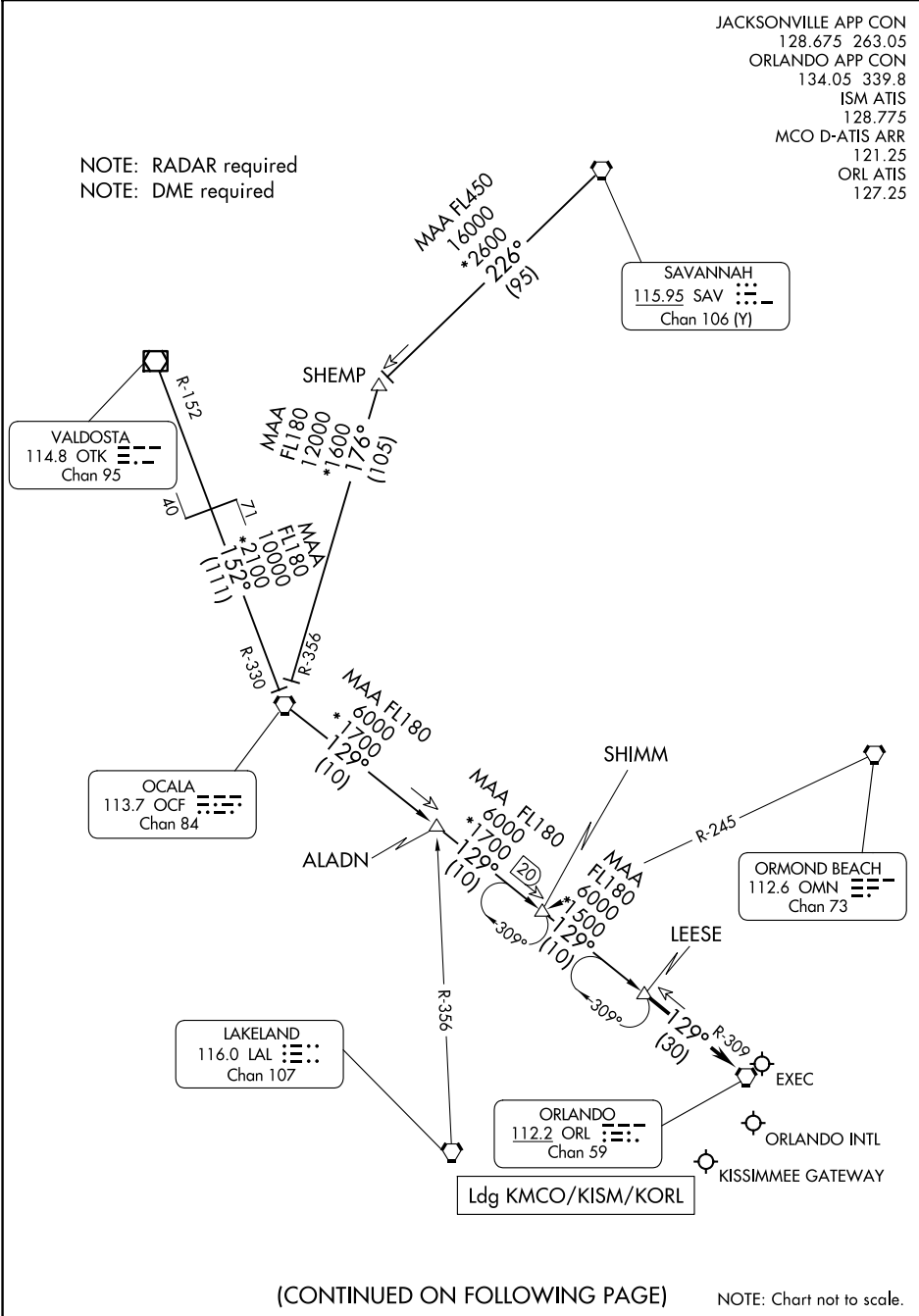


# LEESE THREE ARRIVAL

ORLANDO, FLORIDA

JACKSONVILLE APP CON  
 128.675 263.05  
 ORLANDO APP CON  
 134.05 339.8  
 ISM ATIS  
 128.775  
 MCO D-ATIS ARR  
 121.25  
 ORL ATIS  
 127.25

NOTE: RADAR required  
 NOTE: DME required



SE-3, 23 JAN 2025 to 20 FEB 2025

SE-3, 23 JAN 2025 to 20 FEB 2025

# LEESE THREE ARRIVAL

ORLANDO, FLORIDA

ARRIVAL ROUTE DESCRIPTION

OCALA TRANSITION (OCF.LEESE3): From over OCF VORTAC on OCF R-129 to LEESE. Thence . . . .

SAVANNAH TRANSITION (SAV.LEESE3): From over SAV VORTAC on SAV R-226 to SEMP, then on OCF R-356 to OCF VORTAC, then on OCF R-129 to LEESE. Thence . . . .

VALDOSTA TRANSITION (OTK.LEESE3): From over OTK VOR/DME on OTK R-152 and OCF R-330 to OCF VORTAC, then on OCF R-129 to LEESE. Thence . . . .

. . . . from LEESE on ORLANDO VORTAC ORL R-309 to ORL VORTAC. Expect RADAR vectors to final approach course after LEESE.

SE-3, 23 JAN 2025 to 20 FEB 2025

SE-3, 23 JAN 2025 to 20 FEB 2025