

MZULO THREE DEPARTURE (RNAV)  
(MZUL03.MZULO) 19MAY22

ORLANDO, FLORIDA  
ORLANDO INTL (MCO)

D-ATIS DEP  
120.525  
CLNC DEL  
134.7 341.7  
CPDLC  
GND CON  
126.4 (East)  
121.8 (West)  
ORLANDO INTL TOWER  
118.45 253.5  
(Rwys 17L-35R,17R-35L)  
124.3 253.5  
(Rwys 18L-36R, 18R-36L)  
ORLANDO DEP CON  
124.8 307.0



RNAV 1 - DME/DME/IRU or GPS.

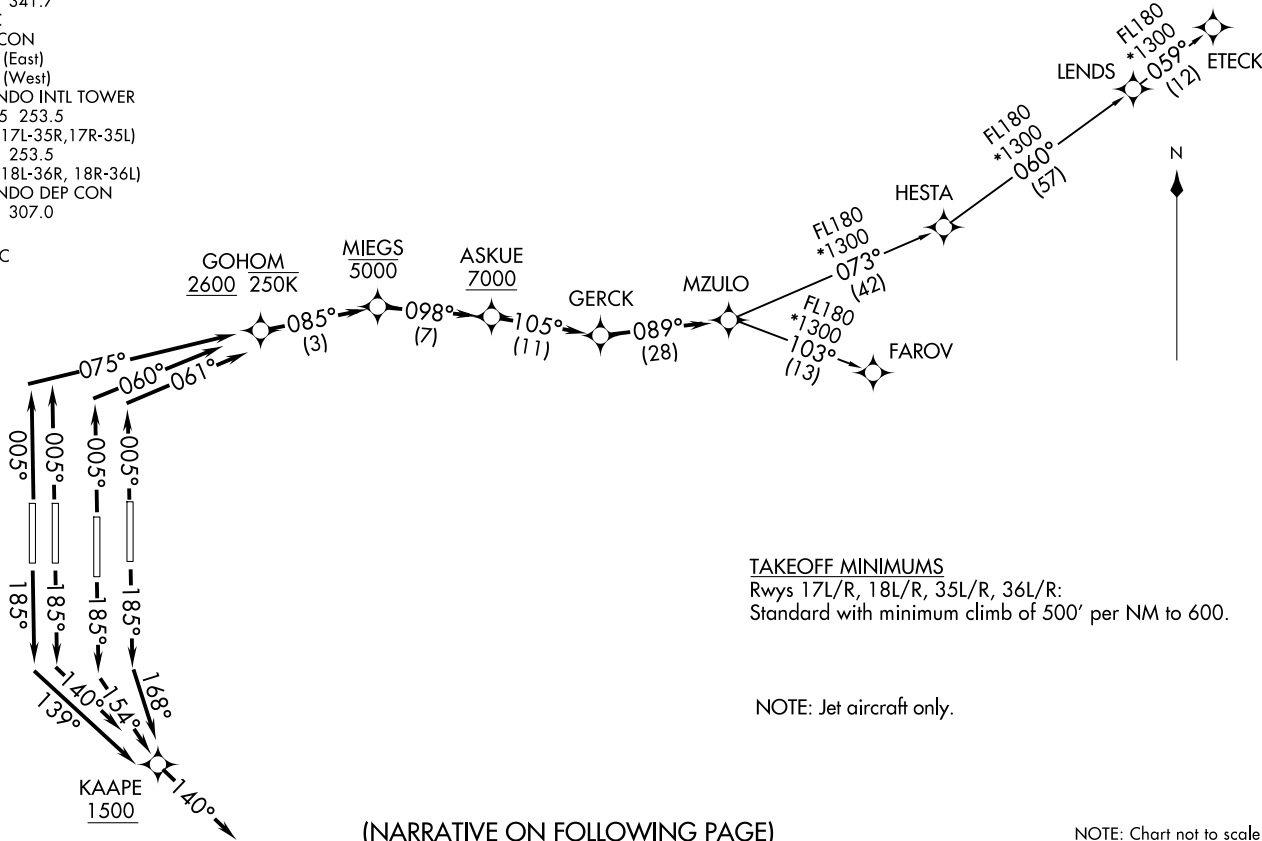
RADAR required.

TOP ALTITUDE:  
7000

(MZUL03.MZULO) 22139  
MZULO THREE DEPARTURE (RNAV)

AL-571 (FAA)

ORLANDO INTL (MCO)  
ORLANDO, FLORIDA



TAKEOFF MINIMUMS

Rwys 17L/R, 18L/R, 35L/R, 36L/R:  
Standard with minimum climb of 500' per NM to 600.

NOTE: Jet aircraft only.

(NARRATIVE ON FOLLOWING PAGE)

NOTE: Chart not to scale.



DEPARTURE ROUTE DESCRIPTION  
SEE ADDITIONAL REQUIREMENTS ON AAUP

TAKEOFF RUNWAY 17L: Climb on heading 185° to intercept course 168° to cross KAAPE at or above 1500, then on track 140°, for vectors to GERCK, thence. . .

TAKEOFF RUNWAY 17R: Climb on heading 185° to intercept course 154° to cross KAAPE at or above 1500, then on track 140°, for vectors to GERCK, thence. . .

TAKEOFF RUNWAY 18L: Climb on heading 185° to intercept course 140° to cross KAAPE at or above 1500, then on track 140°, for vectors to GERCK, thence. . .

TAKEOFF RUNWAY 18R: Climb on heading 185° to intercept course 139° to cross KAAPE at or above 1500, then on track 140°, for vectors to GERCK, thence. . .

TAKEOFF RUNWAY 35L: Climb on heading 005° to intercept course 060° to cross GOHOM at or above 2600 and at or below 250K, then on track 085° to cross MIEGS at or below 5000, then on track 098° to cross ASKUE at or above 7000, then on track 105° to GERCK, thence. . .

TAKEOFF RUNWAY 35R: Climb on heading 005° to intercept course 061° to cross GOHOM at or above 2600 and at or below 250K, then on track 085° to cross MIEGS at or below 5000, then on track 098° to cross ASKUE at or above 7000, then on track 105° to GERCK, thence. . .

TAKEOFF RUNWAYS 36L/R: Climb on heading 005° to intercept course 075° to cross GOHOM at or above 2600 and at or below 250K, then on track 085° to cross MIEGS at or below 5000, then on track 098° to cross ASKUE at or above 7000, then on track 105° to GERCK, thence ...

... on track 089° to MZULO. Maintain 7000. Expect clearance to filed altitude 10 minutes after departure.

ETECK TRANSITION (MZULO3.ETECK)  
FAROV TRANSITION (MZULO3.FAROV)  
LENDS TRANSITION (MZULO3.LENDS)

SE-3, 23 JAN 2025 to 20 FEB 2025

SE-3, 23 JAN 2025 to 20 FEB 2025