

RNAV 1-GPS.
 RADAR required.

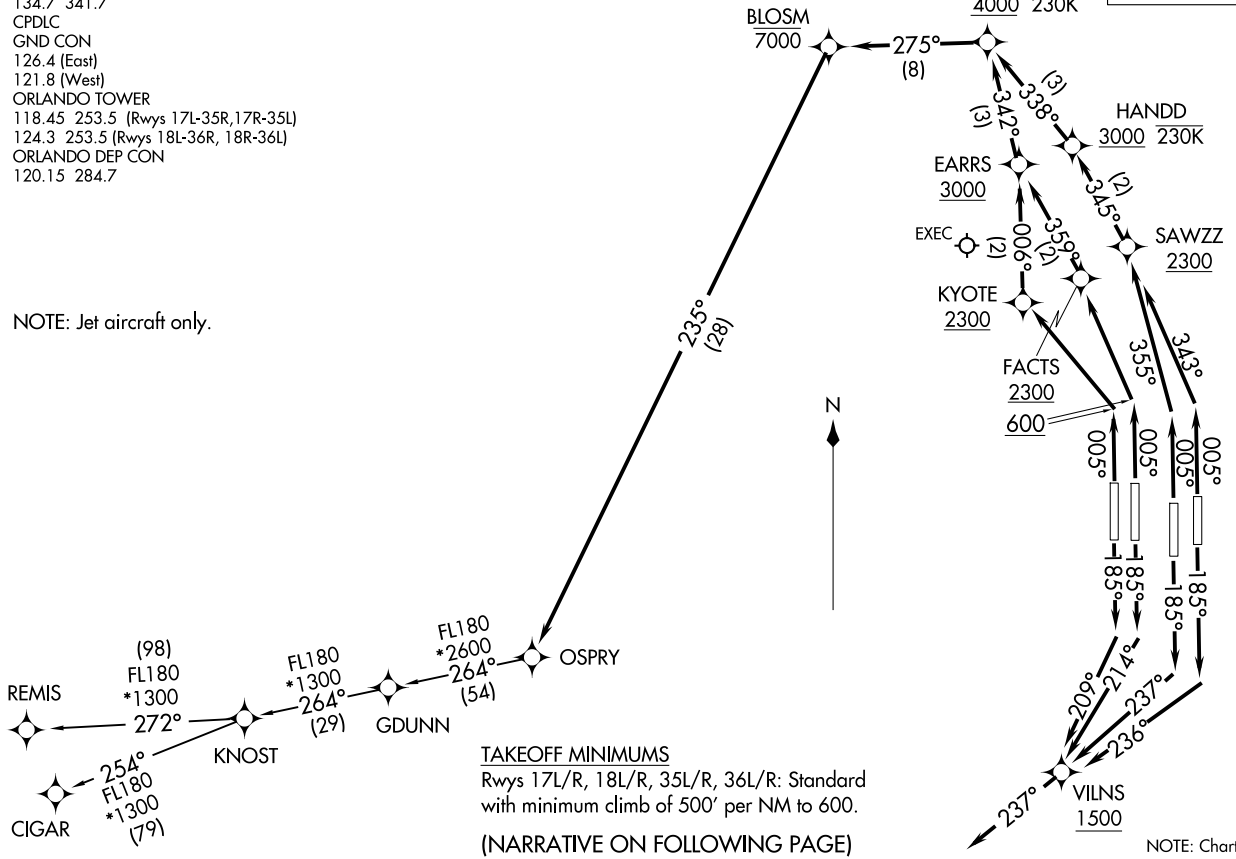
**TOP ALTITUDE:
 7000**

D-ATIS DEP
 120.525
 CLNC DEL
 134.7 341.7
 CPDLC
 GND CON
 126.4 (East)
 121.8 (West)
 ORLANDO TOWER
 118.45 253.5 (Rwys 17L-35R, 17R-35L)
 124.3 253.5 (Rwys 18L-36R, 18R-36L)
 ORLANDO DEP CON
 120.15 284.7

NOTE: Jet aircraft only.

OSPRY ONE DEPARTURE (RNAV)
 (OSPRY1.OSPRY) 19MAY22

(OSPRY1.OSPRY) 22139
OSPRY ONE DEPARTURE (RNAV)



AI-571 (FAA)

ORLANDO INTL (MCO)
 ORLANDO, FLORIDA

ORLANDO, FLORIDA
 ORLANDO INTL (MCO)

NOTE: Chart not to scale.

OSPRY ONE DEPARTURE (RNAV)



DEPARTURE ROUTE DESCRIPTION

SEE ADDITIONAL REQUIREMENTS ON AAUP

TAKEOFF RUNWAY 17L: Climb on heading 185° to intercept course 236° to cross VILNS at or above 1500, then on track 237°, for vectors to OSPRY, thence

TAKEOFF RUNWAY 17R: Climb on heading 185° to intercept course 237° to cross VILNS at or above 1500, then on track 237°, for vectors to OSPRY, thence

TAKEOFF RUNWAY 18L: Climb on heading 185° to intercept course 214° to cross VILNS at or above 1500, then on track 237°, for vectors to OSPRY, thence

TAKEOFF RUNWAY 18R: Climb on heading 185° to intercept course 209° to cross VILNS at or above 1500, then on track 237°, for vectors to OSPRY, thence

TAKEOFF RUNWAY 35L: Climb on heading 005° to intercept course 355° to cross SAWZZ at or above 2300, then on track 345° to cross HANDD at or above 3000 and at or below 230K, then on track 338° to cross LEFTI at or above 4000 and at or below 230K, then on track 275° to cross BLOSM at or below 7000, then on track 235° to OSPRY, thence

TAKEOFF RUNWAY 35R: Climb on heading 005° to intercept course 343° to cross SAWZZ at or above 2300, then on track 345° to cross HANDD at or above 3000 and at or below 230K, then on track 338° to cross LEFTI at or above 4000 and at or below 230K, then on track 275° to cross BLOSM at or below 7000, then on track 235° to OSPRY, thence

TAKEOFF RUNWAY 36L: Climb on heading 005° to 600, then direct to cross KYOTE at or above 2300, then on track 006° to cross EARRS at or above 3000, then on track 342° to cross LEFTI at or above 4000 and at or below 230K, then on track 275° to cross BLOSM at or below 7000, then on track 235° to OSPRY, thence

TAKEOFF RUNWAY 36R: Climb on heading 005° to 600, then direct to cross FACTS at or above 2300, then on track 359° to cross EARRS at or above 3000, then on track 342° to cross LEFTI at or above 4000 and at or below 230K, then on track 275° to cross BLOSM at or below 7000, then on track 235° to OSPRY, thence

. . . . on assigned transition. Maintain 7000, expect clearance to filed altitude 10 minutes after departure.

ALL AIRCRAFT: ATC climb gradients: If unable to accept climb rates advise ATC prior to taxi. RUNWAY 35R: 566 FT/NM to 2300, RUNWAY 36L: 637 FT/NM to 2300, RUNWAY 36R: 621 FT/NM to 2300.

CIGAR TRANSITION (OSPRY1.CIGAR)

REMIS TRANSITION (OSPRY1.REMIS)

SE-3. 23 JAN 2025 to 20 FEB 2025

SE-3. 23 JAN 2025 to 20 FEB 2025

OSPRY ONE DEPARTURE (RNAV)