

WAAS CH 66012 W18A	APP CRS 185°	Rwy Idg 12004 TDZE 96 Apt Elev 96
--	------------------------	--

RNAV (GPS) RWY 18L

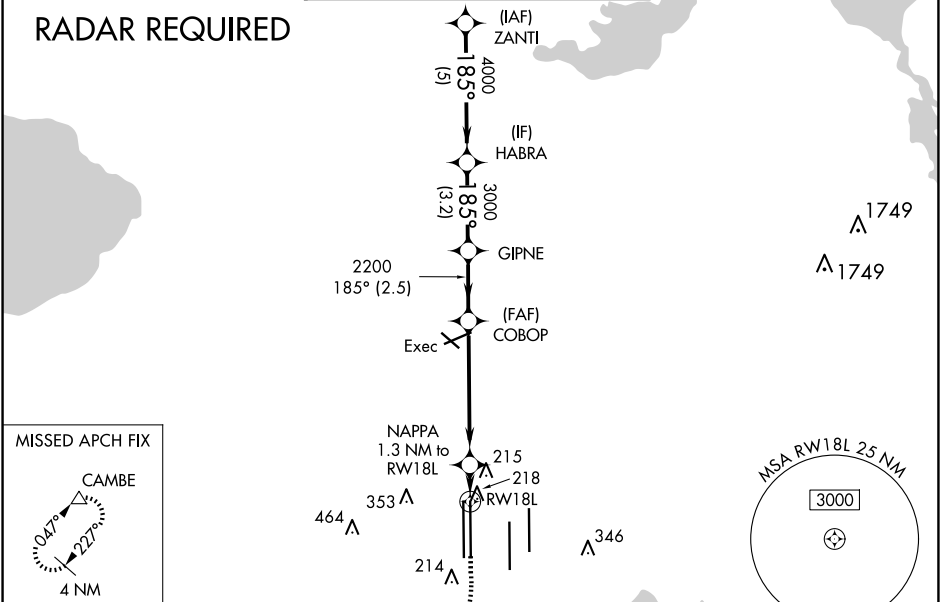
ORLANDO INTL (MCO)

For uncompensated Baro-VNAV systems, LNAV/VNAV NA below -1°C (31°F) or above 54°C (130°F). DME/DME RNP-0.3 NA. Simultaneous approach authorized with Rwy 17L/R. LNAV procedure NA during simultaneous operations. Use of FD or AP providing RNAV track guidance required during simultaneous operations.

MISSED APPROACH: Climb to 500 then climbing right turn to 4000 direct CAMBE and hold, continue climb-in-hold to 4000.

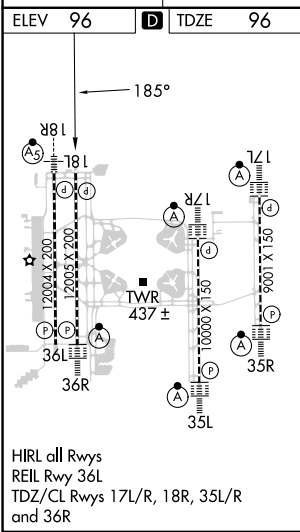
D-ATIS ARR 121.25 DEP 120.525	ORLANDO APP CON 124.8 307.0	ORLANDO TOWER 118.45 253.5 (Rwys 17L-35R, 17R-35L) 124.3 253.5 (Rwys 18L-36R, 18R-36L)	GND CON 126.4 (East) 121.8 (West)	CLNC DEL 134.7 341.7	CPDLC
---	---------------------------------------	--	---	--	-------

RADAR REQUIRED



SE-3, 23 JAN 2025 to 20 FEB 2025

SE-3, 23 JAN 2025 to 20 FEB 2025



ELEV 96	D	TDZE 96
<p>VGSI and RNAV glidepath not coincident (VGSI Angle 3.00/TCH 71).</p>		
<p>ZANTI HABRA GIPNE COBOP NAPPA 1.3 NM to RW18L</p>		
<p>4000 — 185° — 4000 — 3000 — 2200 — 215 — 560 — 1.3 NM — RW18L</p>		
<p>GP 3.00° TCH 55</p>		
<p>5 NM — 3.2 NM — 2.5 NM — 5.2 NM — 1.3 NM</p>		
CATEGORY	A	B C D
LPV DA		296/40 200 (200-¾)
LNAV/VNAV DA		398/50 302 (400-1)
LNAV MDA	480/55 384 (400-1)	480/60 384 (400-1¼)
C CIRCLING	740-1 644 (700-1)	740-1¾ 644 (700-1¾) 740-2 644 (700-2)