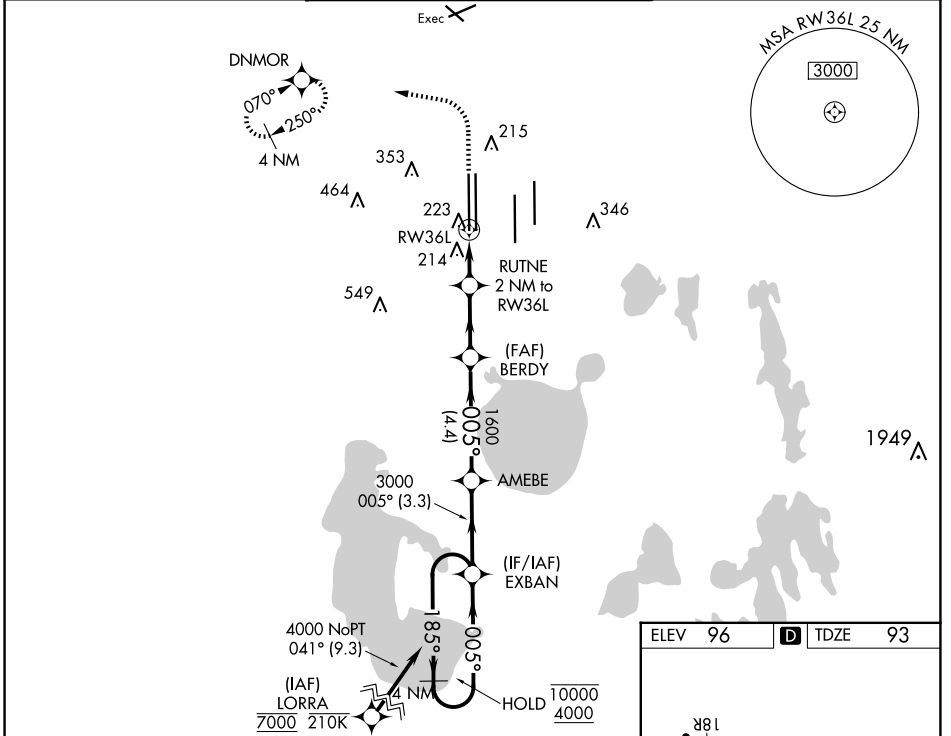


|  |                        |  |
|--|------------------------|--|
| WAAS<br>CH <b>82313</b><br><b>W36B</b> | APP CRS<br><b>005°</b> | Rwy Idg <b>11621</b><br>TDZE <b>93</b><br>Apt Elev <b>96</b> |
|--|------------------------|--|

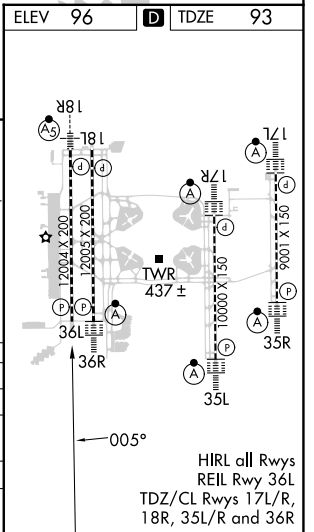
# RNAV (GPS) RWY 36L

ORLANDO INTL (MCO)

|  |                                       |  |   |
|--|---------------------------------------|--|---|
| RNP APCH.  |                                       | MISSED APPROACH: Climb to 500 then climbing left turn to 3000 direct DNMOR and hold, continue climb-in-hold to 3000. |   |
| <p>Simultaneous approach authorized. LNAV procedure NA during simultaneous operations. Use of FD or AP required during simultaneous operations. For uncompensated Baro-VNAV systems, LNAV/VNAV NA below 1°C or above 54°C.</p> |                                       |  |   |
| D-ATIS<br>ARR <b>121.25</b><br>DEP <b>120.525</b>  | ORLANDO APP CON<br><b>124.8 307.0</b> | ORLANDO TOWER<br><b>118.45 253.5</b> (Rwys 17L-35R, 17R-35L)<br><b>124.3 253.5</b> (Rwys 18L-36R, 18R-36L)           | GND CON<br><b>126.4</b> (East)<br><b>121.8</b> (West) |
|  |                                       | CLNC DEL<br><b>134.7</b>   | CPDLC<br><b>341.7</b>                                 |



|              |        |                        |  |                      |                    |
|--------------|--------|------------------------|--|----------------------|--------------------|
| 500          | 3000   | DNMOR                  | VGSi and RNAV glidepath not coincident (VGSi Angle 3.00/TCH 69). |                      | 4 NM               |
|              |        | BERDY                  | AMEBE  | EXBAN                | Holding Pattern    |
|              |        | RUTNE<br>2 NM to RW36L | 1600   | 185° → 10000         | ← 005° 4000        |
|              |        | 780                    | 1600   | 005°                 | GP 3.00°<br>TCH 55 |
| CATEGORY     | A      | B                      | C  | D                    |                    |
| LPV DA       |        | 293/40                 | 200 (200-¾)  |                      |                    |
| LNAV/VNAV DA |        | 406/45                 | 313 (400-¾)  |                      |                    |
| LNAV MDA     | 480/55 | 387 (400-1)            | 480/60   | 387 (400-1½)         |                    |
| CIRCLING     | 740-1  | 644 (700-1)            | 740-1¾<br>644 (700-1¾)   | 740-2<br>644 (700-2) |                    |



SE-3, 23 JAN 2025 to 20 FEB 2025

SE-3, 23 JAN 2025 to 20 FEB 2025