

WAAS CH <b>58003</b> <b>W14A</b>	APP CRS <b>136°</b>	Rwy Idg <b>5502</b> TDZE <b>583</b> Apt Elev <b>583</b>
--	------------------------	---

# RNAV (GPS) RWY 14

FREEMAN MUNI (SE.R)

RNP APCH - GPS.

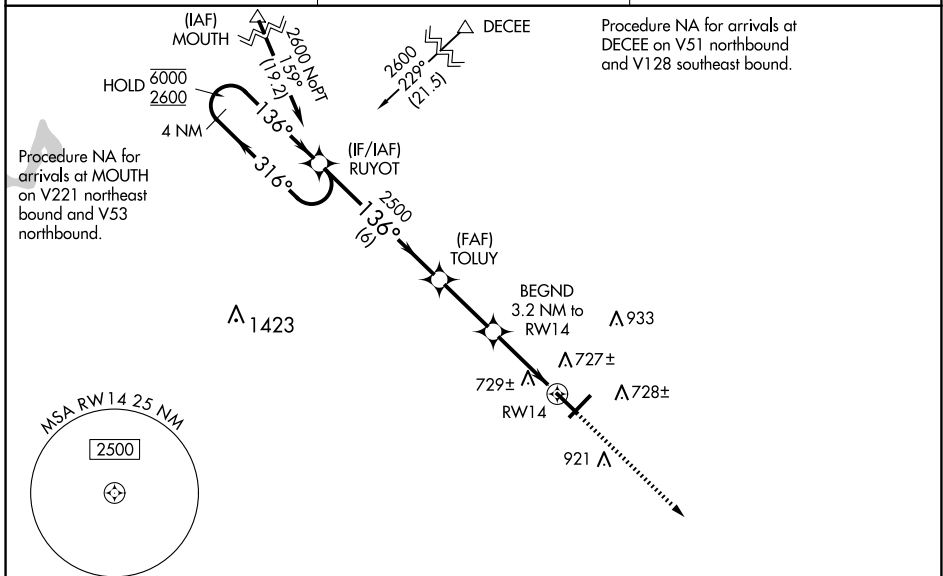
**NA** Baro-VNAV and VDP NA when using Louisville Muhammad Ali Intl altimeter setting. Rwy 14 helicopter visibility reduction below 3/4 SM NA. For uncompensated Baro-VNAV systems, LNAV/VNAV NA below -16°C or above 54°C. When local altimeter setting not received, use Louisville Muhammad Ali Intl altimeter setting and increase all DA 117 feet and all MDA 120 feet; increase LPV and LNAV/VNAV all Cats and LNAV and Circling Cats C/D visibility 1/4 SM.

**MISSED APPROACH:**  
Climb to 2400 direct ZEKAM and hold.

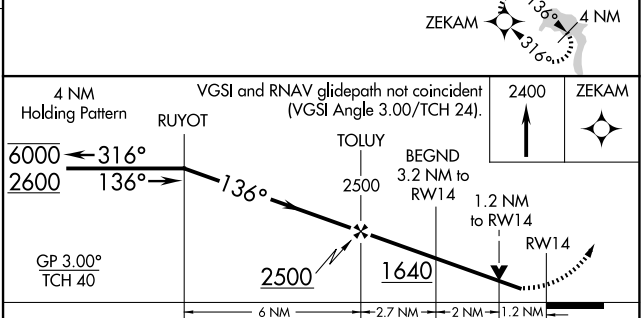
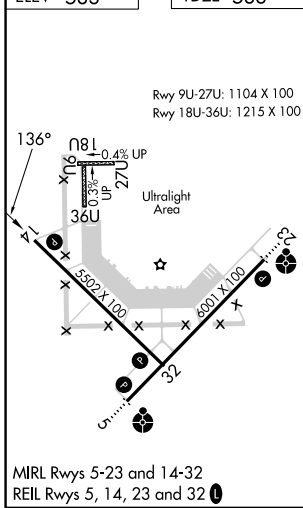
AWOS-3  
**119.425**

LOUISVILLE APP CON  
**132.075 327.0**

UNICOM  
**122.8 (CTAF) 0**



ELEV <b>583</b>	TDZE <b>583</b>
-----------------	-----------------



CATEGORY	A	B	C	D
LPV DA		860-7/8	277 (300-7/8)	
LNAV/VNAV DA		1037-13/8	454 (500-13/8)	
LNAV MDA	980-1	397 (400-1)	980-1 1/8	397 (400-1 1/8)
<b>C</b> CIRCLING	1040-1 457 (500-1)	1100-1 517 (600-1)	1300-2 717 (800-2)	1300-2 1/4 717 (800-2 1/4)

EC-2, 23 JAN 2025 to 20 FEB 2025

EC-2, 23 JAN 2025 to 20 FEB 2025