

WAAS CH 99403 W32A	APP CRS 316°	Rwy Idg 5502 TDZE 574 Apt Elev 583
--	------------------------	---

RNAV (GPS) RWY 32

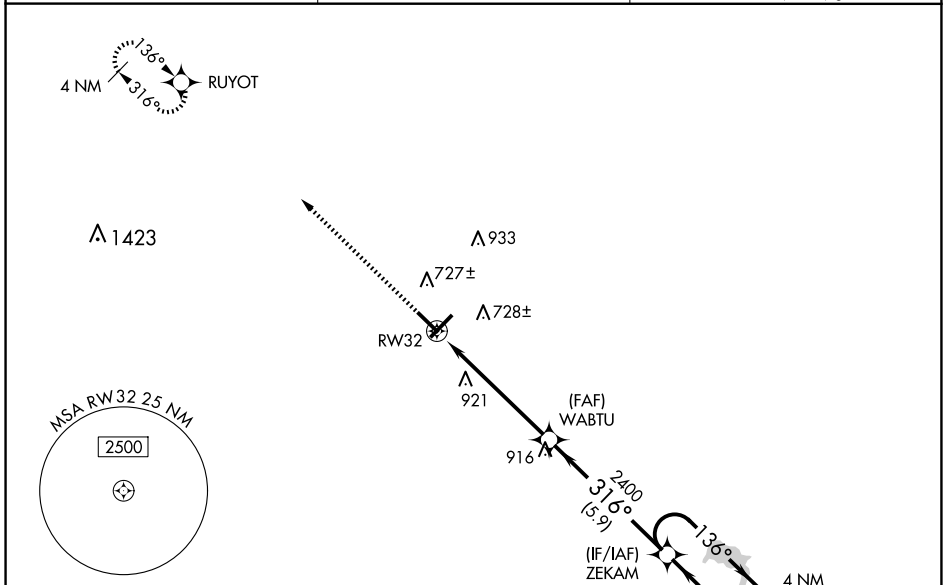
FREEMAN MUNI (SE.R)

RNP APCH - GPS.

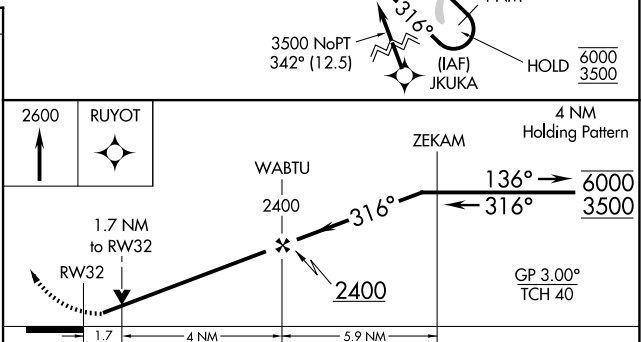
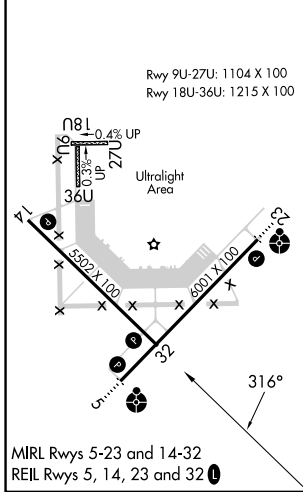
NA Baro-VNAV and VDP NA when using Louisville Muhammad Ali Intl altimeter setting. Rwy 32 helicopter visibility reduction below $\frac{3}{4}$ SM NA. For uncompensated Baro-VNAV systems, LNAV/VNAV NA below -16°C or above 54°C. When local altimeter setting not received, use Louisville Muhammad Ali Intl altimeter setting and increase LPV DA to 979 feet and all visibilities $\frac{1}{2}$ SM; increase LNAV/VNAV DA to 1230 feet and all visibilities $\frac{3}{8}$ SM; increase all MDAs 120 feet and LNAV visibility Cat C/D $\frac{3}{8}$ SM, and Circling visibility Cat C/D $\frac{1}{2}$ SM.

MISSED APPROACH:
Climb to 2600 direct RUYOT and hold.

AWOS-3 119.425	LOUISVILLE APP CON 132.075 327.0	UNICOM 122.8 (CTAF)
--------------------------	--	-------------------------------



ELEV 583	TDZE 574
-----------------	-----------------



CATEGORY	A	B	C	D
LPV DA	859-1 285 (300-1)			
LNAV/VNAV DA	1110-1½ 536 (600-1½)			
LNAV MDA	1140-1	566 (600-1)	1140-1½	566 (600-1½)
C CIRCLING	1140-1	557 (600-1)	1300-2 717 (800-2)	1300-2¼ 717 (800-2¼)

EC-2, 23 JAN 2025 to 20 FEB 2025

EC-2, 23 JAN 2025 to 20 FEB 2025