

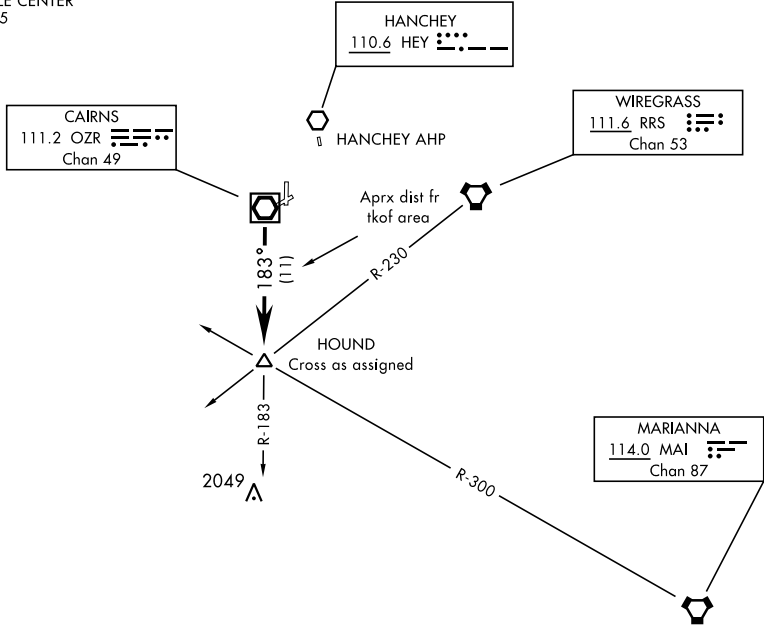
HOUND-TWO DEPARTURE (HOUND2.HOUND)

CAIRNS AAF (KOZR)
FORT NOVOSEL, ALABAMA

ATIS 111.2 316.15
 CLNC DEL ★
 118.075 380.1
 GND CON ★
 121.9 288.25
 TOWER ★
 135.2 (CTAF) 248.55
 DEP CON ★
 133.75 270.35
 JACKSONVILLE CENTER
 134.3 322.55

[USA]

610



SE-4, 23 JAN 2025 to 20 FEB 2025

SE-4, 23 JAN 2025 to 20 FEB 2025



DEPARTURE ROUTE DESCRIPTION

TAKEOFF RWY 6, 18 or 36: Climbing right turn heading 205°...
TAKEOFF RWY 24: Climbing left turn heading 120°...
TAKEOFF PAD C OR G: Climb heading 178° to 1000, then right turn heading 205°...
 Maintain 2000, expect clearance to requested altitude/flight level ten (10) minutes after departure.
 ...intercept OZR VOR/DME R-183 to HOUND INT.

HOUND-TWO DEPARTURE (HOUND2.HOUND)

FORT NOVOSEL, ALABAMA
CAIRNS AAF (KOZR)