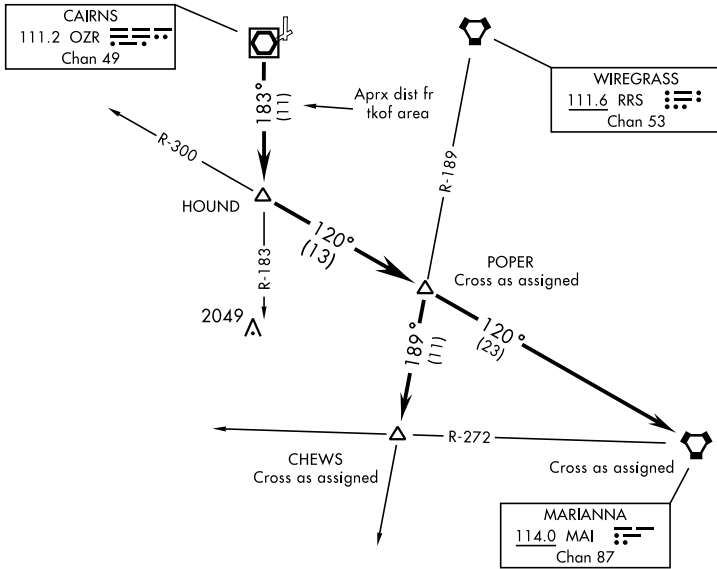


POPER-ONE DEPARTURE (POPER1.POPER)

ATIS 111.2 316.15
CLNC DEL ★
118.075 380.1
GND CON ★
121.9 288.25
TOWER ★
135.2 (CTAF) 248.55
DEP CON ★
133.75 270.35
JACKSONVILLE CENTER
134.3 322.55

[USA]

610



SE-4, 23 JAN 2025 to 20 FEB 2025

SE-4, 23 JAN 2025 to 20 FEB 2025

DEPARTURE ROUTE DESCRIPTION

TAKEOFF RWY 6, 18 or 36: Climbing right turn heading 205°

TAKEOFF RWY 24: Climbing left turn heading 120°

TAKEOFF PAD C OR G: Climb heading 178° to 1000, then right turn heading 205°

.... to intercept OZR VOR/DME R-183 to HOUND INT, and via MAI VORTAC R-300 to POPER INT. Thence via assigned Transition. Maintain 2000, expect clearance to requested altitude/flight level ten (10) minutes after departure.

CHEWS TRANSITION: (POPER 1.CHEWS) Proceed via RRS VORTAC R-189 to CHEWS INT.

MARIANNA TRANSITION: (POPER 1.MAI) Proceed via MAI R-300 to MAI VORTAC.

POPER-ONE DEPARTURE (POPER1.POPER)