

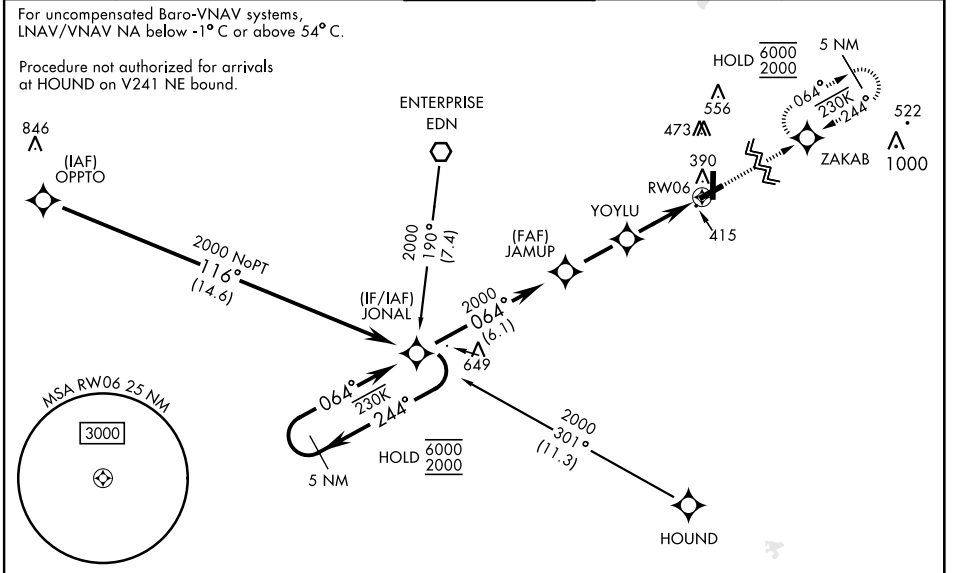
FORT NOVOSHEL, ALABAMA

RNAV (GPS) RWY 6

WAAS CH 50537 W06A	APCH CRS 064°	Rwy Idg TDZE Arprt Elev 4546 298 301	[USA]	CAIRNS AAF (KOZR)
--	-------------------------	--	-------	-------------------

RNP APCH - GPS	<p>▼ * When ALS inop, increase RVR to 40, vis to 3/4 mile. ** When ALS inop, increase RVR to 45, vis to 7/8 mile. *** When ALS inop, increase CAT AB RVR to 55, vis to 1 mile; CAT CD RVR to 60, vis to 1 1/2 miles.</p>	<p>MALSRL </p>	MISSED APPROACH: Climb to 2000 direct ZAKAB and hold.
----------------	---	---------------------	---

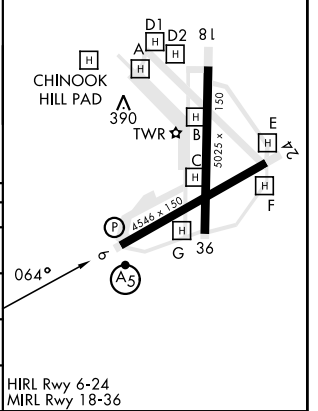
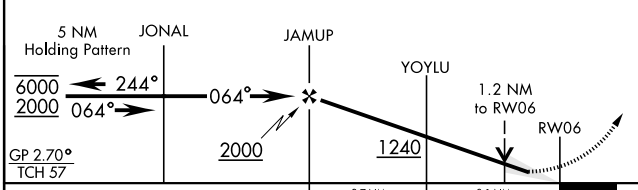
ATIS 111.2 316.15	APP CON * 021°-120° 125.4 327.125 121°-219° 133.75 270.35 220°-340° 133.45 239.275 341°-020° 121.1 319.25	TOWER * 135.2 (CTAF) 248.55	GND CON * 121.9 288.25	CLNC DEL* 118.075 380.1
---------------------------------------	---	---	--	---



SE-4, 23 JAN 2025 to 20 FEB 2025

SE-4, 23 JAN 2025 to 20 FEB 2025

		ELEV 301	TDZE 298
--	--	----------	----------



CATEGORY	A	B	C	D
LPV DA*	498/24		200	(200-1/2)
LNAV/VNAV DA**	585/24		287	(300-1/2)
LNAV MDA***	680/24	382 (400-1/2)	680/35	382 (400-5/8)
CIRCLING	780-1 479 (500-1)	820-1 519 (600-1)	900-1 1/2 599 (600-1 1/2)	900-2 599 (600-2)

FORT NOVOSHEL, ALABAMA 31° 17' N-85° 43' W CAIRNS AAF (KOZR)

Amdt 3 26DEC24

RNAV (GPS) RWY 6