

VOR RWY 6

CAIRNS AAF (KOZR)

VOR/DME OZR 111.2 Chan 49	APCH CRS 056°	Rwy Idg TDZE Arprt Elev 4546 298 301
-----------------------------------------------	-------------------------	--------------------------------------------------------------------------

[USA]

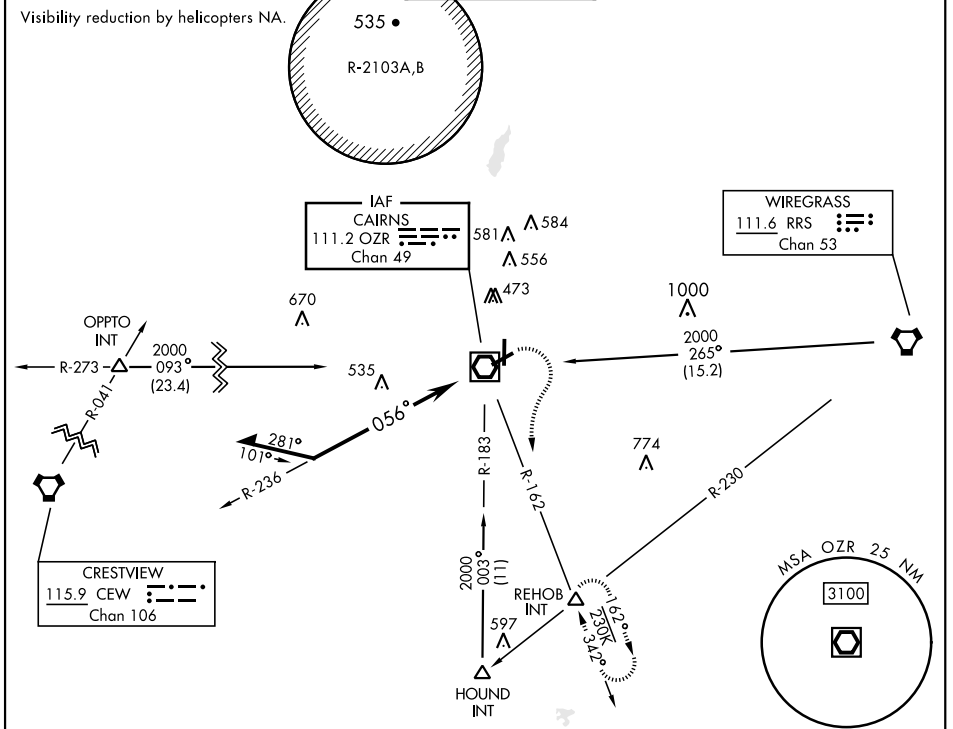
▼ * When ALS inop, increase CAT AB RVR to 55, vis to 1 mile; CAT CD vis to 1½ miles.
** Circling to RWY 24 at night not authorized.



MISSED APPROACH: Climbing right turn to 2000 via OZR VOR/DME R-162 to REHOB INT and hold; or when directed by ATC, climbing left turn to 2000 heading 290° within 10 NM (RADAR required).

ATIS 111.2 316.15	APP CON ★ 021°-120° 125.4 327.125 121°-219° 133.75 270.35 220°-340° 133.45 239.275 341°-020° 121.1 319.25	TOWER ★ 135.2 (CTAF) 248.55	GND CON ★ 121.9 288.25	CLNC DEL ★ 118.075 380.1
---------------------------------------	---------------------------------------------------------------------------------------------------------------------------------------------------	-------------------------------------------------	--------------------------------------------	----------------------------------------------

Visibility reduction by helicopters NA.



SE-4, 23 JAN 2025 to 20 FEB 2025

SE-4, 23 JAN 2025 to 20 FEB 2025

ELEV 301		TDZE 298																																					
<table border="1" style="width: 100%;"> <thead> <tr> <th>CATEGORY</th> <th colspan="2">A</th> <th colspan="2">B</th> <th colspan="2">C</th> <th colspan="2">D</th> </tr> </thead> <tbody> <tr> <td>S-6 *</td> <td>840/24</td> <td>542</td> <td colspan="2">(600-½)</td> <td>840/60</td> <td>542</td> <td colspan="2">(600-1½)</td> </tr> <tr> <td>CIRCLING **</td> <td>840-1</td> <td>539</td> <td colspan="2">(600-1)</td> <td>900-1½</td> <td>599</td> <td colspan="2">(600-1½)</td> </tr> <tr> <td></td> <td></td> <td></td> <td></td> <td></td> <td>900-2</td> <td>599</td> <td colspan="2">(600-2)</td> </tr> </tbody> </table>				CATEGORY	A		B		C		D		S-6 *	840/24	542	(600-½)		840/60	542	(600-1½)		CIRCLING **	840-1	539	(600-1)		900-1½	599	(600-1½)							900-2	599	(600-2)	
CATEGORY	A		B		C		D																																
S-6 *	840/24	542	(600-½)		840/60	542	(600-1½)																																
CIRCLING **	840-1	539	(600-1)		900-1½	599	(600-1½)																																
					900-2	599	(600-2)																																
		<p>HIRL Rwy 6-24 MIRL Rwy 18-36</p>																																					

VOR RWY 6