

BANGR NINE DEPARTURE (RNAV)
(BANGR9.BANGR) 120CT17

SEATTLE WASHINGTON
SEATTLE-TACOMA INTL (SEA)

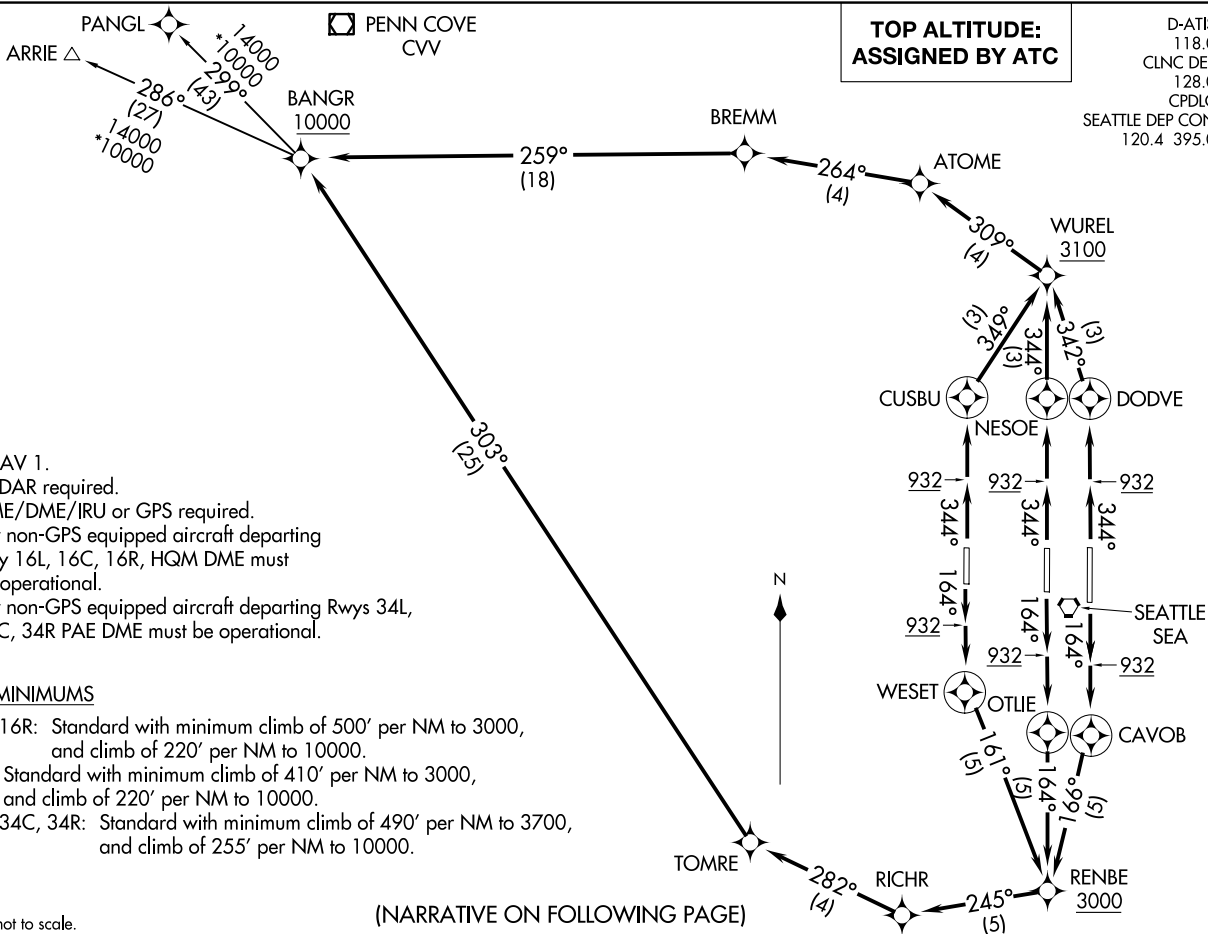
(BANGR9.BANGR) 17285
BANGR NINE DEPARTURE (RNAV)

AI-582 (FAA)

SEATTLE-TACOMA INTL (SEA)
SEATTLE WASHINGTON

**TOP ALTITUDE:
ASSIGNED BY ATC**

D-ATIS 118.0
CLNC DEL 128.0
CPDLC
SEATTLE DEP CON 120.4 395.0



- NOTE: RNAV 1.
- NOTE: RADAR required.
- NOTE: DME/DME/IRU or GPS required.
- NOTE: For non-GPS equipped aircraft departing Rwy 16L, 16C, 16R, HQM DME must be operational.
- NOTE: For non-GPS equipped aircraft departing Rws 34L, 34C, 34R PAE DME must be operational.

TAKEOFF MINIMUMS

- Rws 16L, 16R: Standard with minimum climb of 500' per NM to 3000, and climb of 220' per NM to 10000.
- Rwy 16C: Standard with minimum climb of 410' per NM to 3000, and climb of 220' per NM to 10000.
- Rws 34L, 34C, 34R: Standard with minimum climb of 490' per NM to 3700, and climb of 255' per NM to 10000.

NOTE: Chart not to scale.

(NARRATIVE ON FOLLOWING PAGE)



DEPARTURE ROUTE DESCRIPTION

TAKEOFF RUNWAY 16L: Climb heading 164° to at/above 932, then direct CAVOB, then on track 166° to cross RENBE at or above 3000, then on depicted route to BANGR, cross BANGR at or above 10000, thence. . . .

TAKEOFF RUNWAY 16C: Climb heading 164° to at/above 932, then direct OTLIE, then on track 164° to cross RENBE at or above 3000, then on depicted route to BANGR, cross BANGR at or above 10000, thence. . . .

TAKEOFF RUNWAY 16R: Climb heading 164° to at/above 932, then direct WESET, then on track 161° to cross RENBE at or above 3000, then on depicted route to BANGR, cross BANGR at or above 10000, thence. . . .

TAKEOFF RUNWAY 34L: Climb heading 344° to at/above 932, then direct CUSBU, then on track 349° to cross WUREL at or above 3100, then on depicted route to BANGR, cross BANGR at or above 10000, thence. . . .

TAKEOFF RUNWAY 34C: Climb heading 344° to at/above 932, then direct NESOE, then on track 344° to cross WUREL at or above 3100, then on depicted route to BANGR, cross BANGR at or above 10000, thence. . . .

TAKEOFF RUNWAY 34R: Climb heading 344° to at/above 932, then direct DODVE, then on track 342° to cross WUREL at or above 3100, then on depicted route to BANGR, cross BANGR at or above 10000, thence. . . .

. . . .on (transition). Maintain assigned altitude, expect filed altitude/flight level 15 NM from SEA VORTAC.

ARRIE TRANSITION (BANGR9.ARRIE)

PANGL TRANSITION (BANGR9.PANGL)

NW-1, 23 JAN 2025 to 20 FEB 2025

NW-1, 23 JAN 2025 to 20 FEB 2025