

CHINS FIVE ARRIVAL
(CHINS, CHINS5) 08SEP22

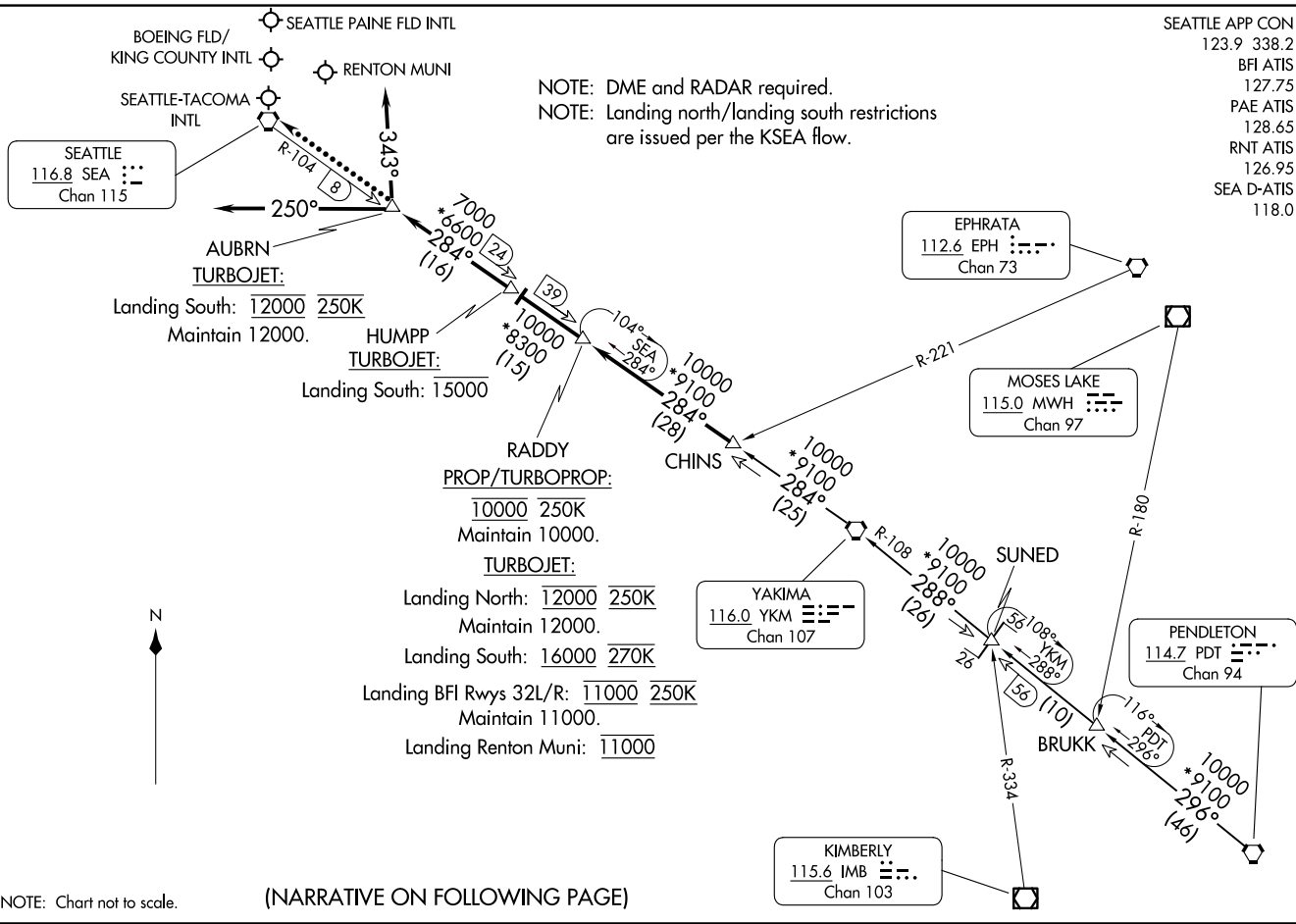
(CHINS, CHINS5) 23278
CHINS FIVE ARRIVAL

AL-582 (FAA)

SEATTLE, WASHINGTON

SEATTLE APP CON
123.9 338.2
BFI ATIS
127.75
PAE ATIS
128.65
RNT ATIS
126.95
SEA D-ATIS
118.0

NOTE: DME and RADAR required.
NOTE: Landing north/landing south restrictions
are issued per the KSEA flow.



BOEING FLD/
KING COUNTY INTL
SEATTLE-TACOMA
INTL
SEATTLE
116.8 SEA
Chan 115

AUBRN
TURBOJET:
Landing South: 12000 250K
Maintain 12000.

HUMPP
TURBOJET:
Landing South: 15000

RADDY
PROP/TURBOPROP:
10000 250K
Maintain 10000.
TURBOJET:
Landing North: 12000 250K
Maintain 12000.
Landing South: 16000 270K

Landing BFI Rwy 32L/R: 11000 250K
Maintain 11000.
Landing Renton Muni: 11000

YAKIMA
116.0 YKM
Chan 107

EPHRATA
112.6 EPH
Chan 73

MOSES LAKE
115.0 MWH
Chan 97

PENDLETON
114.7 PDT
Chan 94

KIMBERLY
115.6 IMB
Chan 103



NOTE: Chart not to scale.

(NARRATIVE ON FOLLOWING PAGE)

SEATTLE, WASHINGTON

ARRIVAL ROUTE DESCRIPTION

PENDLETON TRANSITION (PDT.CHINS5): From over PDT VORTAC on PDT R-296 to BRUKK, then on PDT R-296 to SUNED, then on YKM R-108 to YKM VORTAC, then on YKM R-284 to CHINS, thence

SUNED TRANSITION (SUNED.CHINS5): From SUNED on YKM R-108 to YKM VORTAC, then on YKM R-284 to CHINS, thence

YAKIMA TRANSITION (YKM.CHINS5): From over YKM VORTAC on YKM R-284 to CHINS, thence

. . . . from CHINS on YKM R-284 and SEA R-104 to RADDY, then on SEA R-104 to HUMPP, then on SEA R-104 to AUBRN, thence

LANDING NORTH: Heading 250° for vectors to final approach course.

LANDING SOUTH: Heading 343° for vectors to final approach course.

LANDING RENTON MUNI: Heading 343° for vectors to final approach course.

LANDING SEATTLE PAINE FLD INTL: Heading 343° for vectors to final approach course.

LOST COMMUNICATIONS: After AUBRN proceed direct SEA VORTAC.

NW-1, 23 JAN 2025 to 20 FEB 2025

NW-1, 23 JAN 2025 to 20 FEB 2025