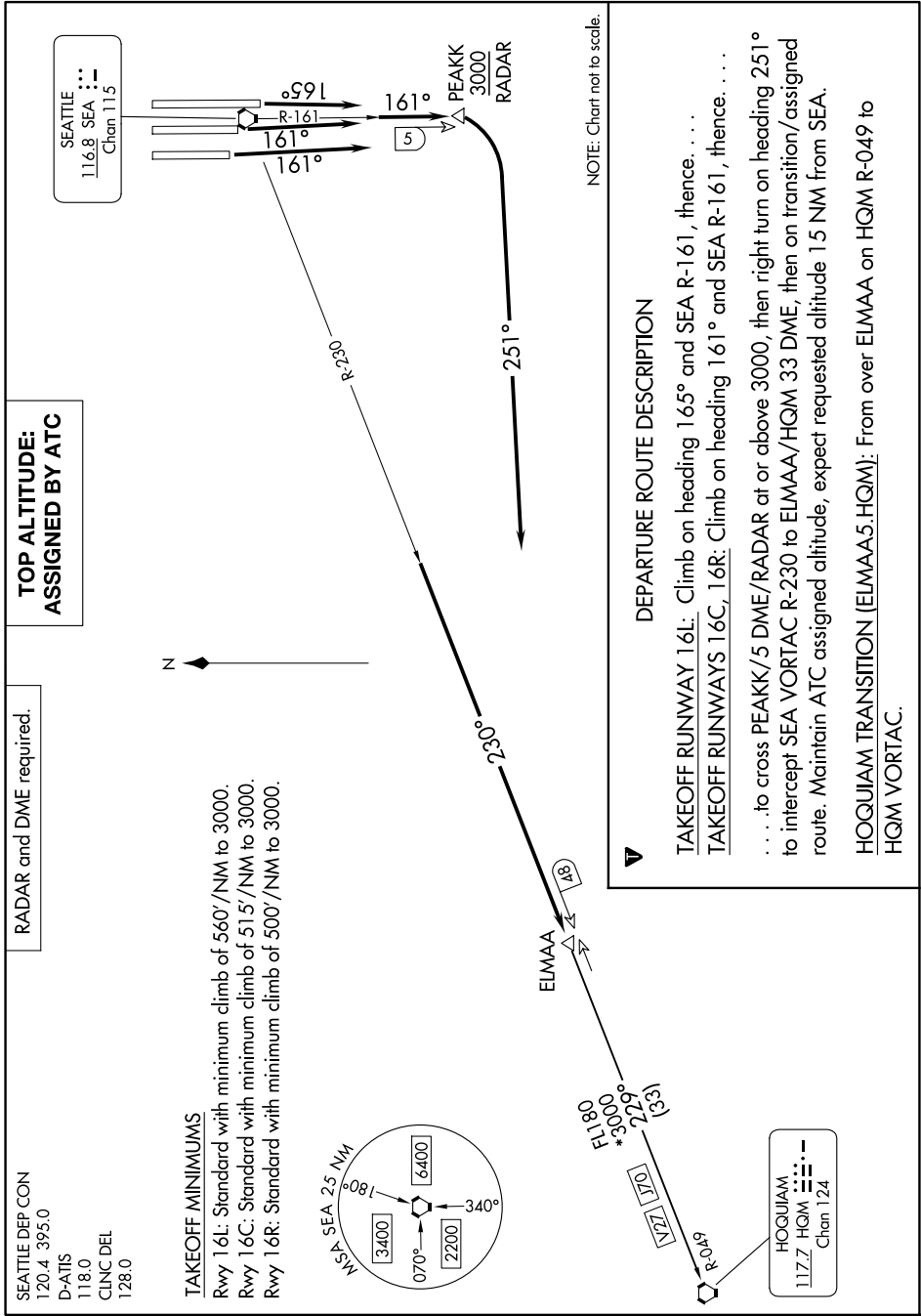


ELMAA FIVE DEPARTURE

AL-582 (FAA)

SEATTLE-TACOMA INTL (SEA)
SEATTLE, WASHINGTON

NW-1, 23 JAN 2025 to 20 FEB 2025



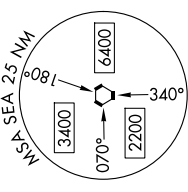
SEATTLE DEP CON
120.4 395.0
D-ATIS
118.0
CLNC DEL
128.0

RADAR and DME required.

**TOP ALTITUDE:
ASSIGNED BY ATC**

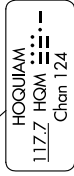
TAKEOFF MINIMUMS

Rwy 16L: Standard with minimum climb of 560'/NM to 3000.
Rwy 16C: Standard with minimum climb of 515'/NM to 3000.
Rwy 16R: Standard with minimum climb of 500'/NM to 3000.



ELMAA

FL180
*3000
230° (33)
170
170
R-049



NOTE: Chart not to scale.

DEPARTURE ROUTE DESCRIPTION

TAKEOFF RUNWAY 16L: Climb on heading 165° and SEA R-161, thence. . . .
TAKEOFF RUNWAYS 16C, 16R: Climb on heading 161° and SEA R-161, thence. . . .
 . . . to cross PEAKK/5 DME/RADAR at or above 3000, then right turn on heading 251° to intercept SEA VORTAC R-230 to ELMAA/HQM 33 DME, then on transition/assigned route. Maintain ATC assigned altitude, expect requested altitude 15 NM from SEA.
HOQUIAM TRANSITION [ELMAA5.HQM]: From over ELMAA on HQM R-049 to HQM VORTAC.

ELMAA FIVE DEPARTURE

SEATTLE, WASHINGTON
SEATTLE-TACOMA INTL (SEA)

NW-1, 23 JAN 2025 to 20 FEB 2025