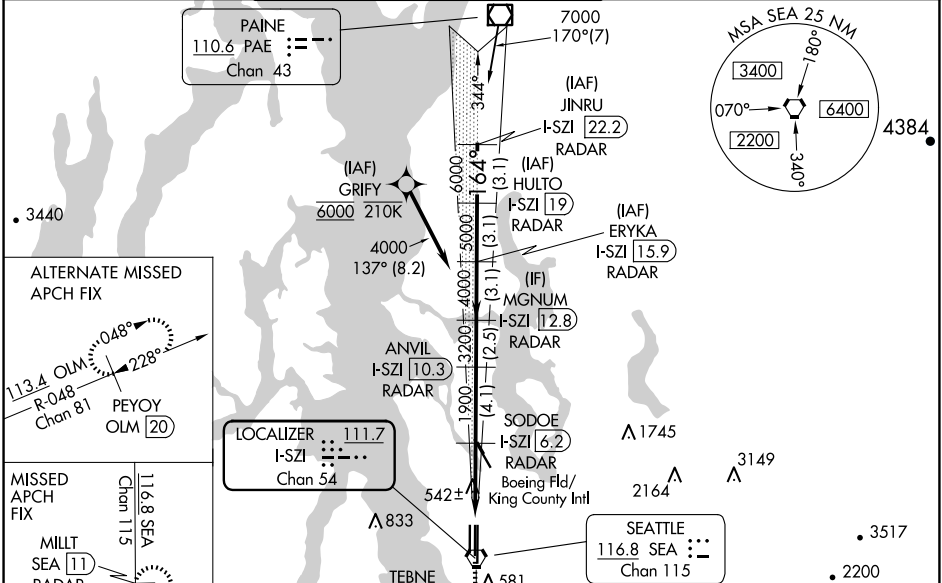


LOC/DME I-SZI 111.7 Chan 54	APP CRS 164°	Rwy Idg TDZE 430 Apt Elev 432
---	------------------------	---

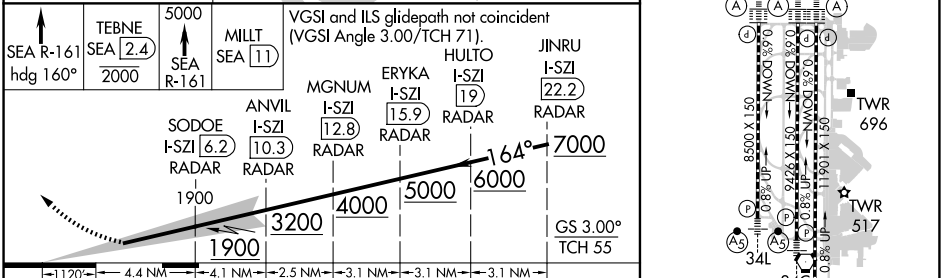
ILS RWY 16C (SA CAT I)

SEATTLE-TACOMA INTL (SEA)

DME or RADAR required. From GRIFY: RNAV 1-GPS required.		ALSF-2 	MISSED APPROACH: Climb on heading 160° and SEA VORTAC R-161 to cross TEBNE/SEA 2.4 DME/RADAR at or below 2000, then climb to 5000 on SEA VORTAC R-161 to MILLT/SEA 11 DME/RADAR and hold, continue climb-in-hold to 5000.					
Simultaneous approach authorized with Rwy 16R. Simultaneous operations require use of vertical guidance, maintain last assigned altitude until established on glideslope. Requires specific OPSPEC, MSPEC or LOA approval and use of HUD to DH.				D-ATIS 118.0	SEATTLE APP CON 133.65 273.45	SEATTLE TOWER 119.9 239.3 (Rwys 16L, 16C, 34C, 34R) 120.95 239.3 (Rwys 16R, 34L)	GND CON 121.7	CLNC DEL 128.0



SEA R-161 hdg 160°	TEBNE SEA 2.4 2000	5000 SEA R-161	MILLT SEA 11	VGSI and ILS glidepath not coincident (VGSI Angle 3.00°/TCH 71).	JINRU I-SZI 22.2 RADAR	HULTO I-SZI 19 RADAR	ERYKA I-SZI 15.9 RADAR	MGNM I-SZI 12.8 RADAR	ANVIL I-SZI 10.3 RADAR	SODOE I-SZI 6.2 RADAR	TEBNE SEA 2.4 RADAR 2000
-----------------------	--------------------------	-------------------	-----------------	---	---------------------------------	-------------------------------	---------------------------------	--------------------------------	---------------------------------	--------------------------------	-----------------------------------



CATEGORY	A	B	C	D
S-ILS 16C	RA 292/14 150 DA 580			
SA CATEGORY I ILS - SPECIAL AIRCREW & AIRCRAFT CERTIFICATION REQUIRED				

NW-1, 23 JAN 2025 to 20 FEB 2025

NW-1, 23 JAN 2025 to 20 FEB 2025