

LOC/DME I-TUC 111.7 Chan 54	APP CRS 344°	Rwy ldg TDZE 387 Apt Elev 432	9426
---	------------------------	--	-------------

ILS RWY 34C (SA CAT I & II)

SEATTLE-TACOMA INTL (SEA)

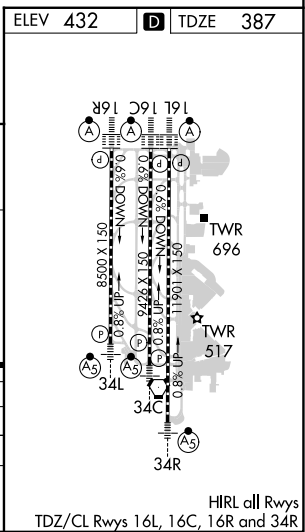
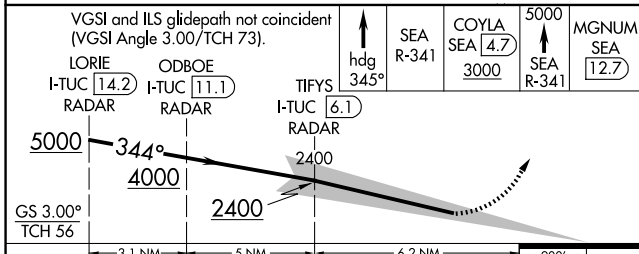
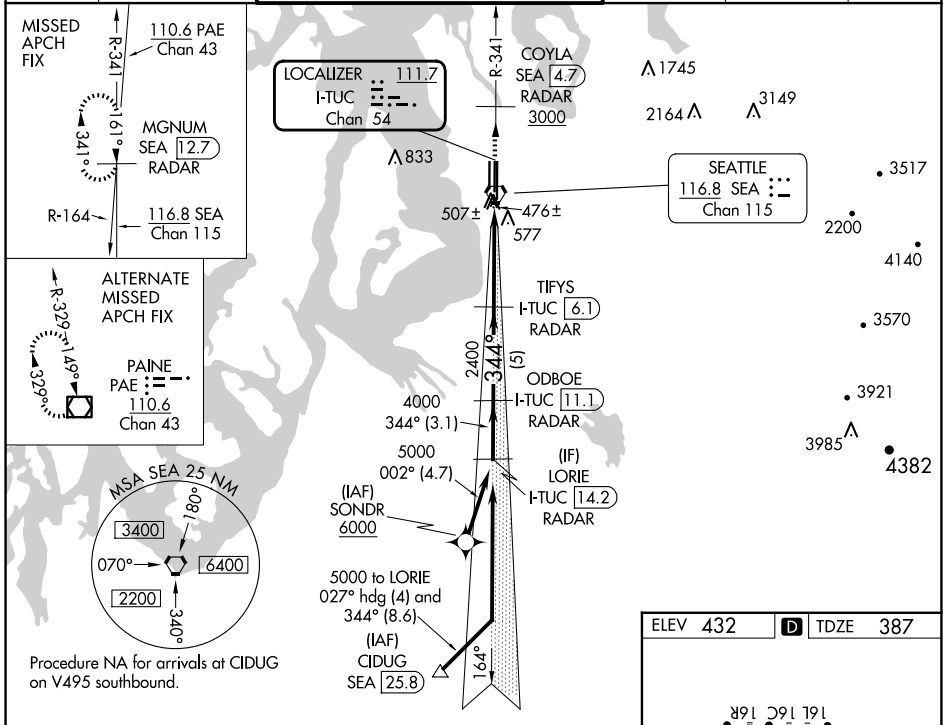
DME or RADAR required. From SONDR: RNAV 1-GPS required.

Simultaneous approach authorized with Rwy 34L. SA CAT I: Requires specific OPSPEC, MSPEC, or LOA approval and use of HUD to DH. SA CAT II: Reduced lighting: Requires specific OPSPEC, MSPEC, or LOA approval and use of autoland or HUD to touchdown.

MALS R

MISSED APPROACH: Climb on heading 345° and outbound on SEA VORTAC R-341 to cross COYLA/SEA 4.7 DME/RADAR at or above 3000 then climb to 5000 on SEA VORTAC R-341 to MGNUM/SEA 12.7 DME/RADAR and hold, continue climb-in-hold to 5000.

D-ATIS 118.0	SEATTLE APP CON 133.65 273.45	SEATTLE TOWER 119.9 239.3 (Rwys 16L, 16C, 34C, 34R) 120.95 239.3 (Rwys 16R, 34L)	GND CON 121.7	CLNC DEL 128.0	CPDLC
------------------------	---	--	-------------------------	--------------------------	-------



CATEGORY	A	B	C	D
S-ILS 34C	SA CAT I	RA 231/14	150	DA 537
S-ILS 34C	SA CAT II	RA 112/12	100	DA 487

SA CATEGORY I & II ILS - SPECIAL AIRCREW & AIRCRAFT CERTIFICATION REQUIRED

NW-1, 23 JAN 2025 to 20 FEB 2025

NW-1, 23 JAN 2025 to 20 FEB 2025

HIRL all Rwys
TDZ/CL Rwys 16L, 16C, 16R and 34R