

LOC/DME I-CJL 110.75 Chan 44 (Y)	APP CRS 164°	Rwy Idg TDZE Apt Elev	8500 415 432
---	------------------------	-----------------------------	---

ILS or LOC RWY 16R

SEATTLE-TACOMA INTL (SEA)

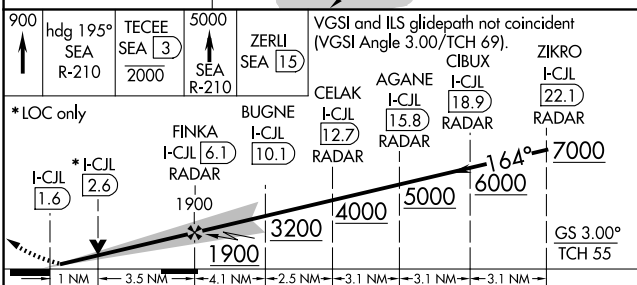
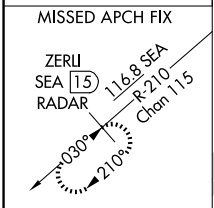
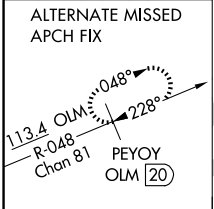
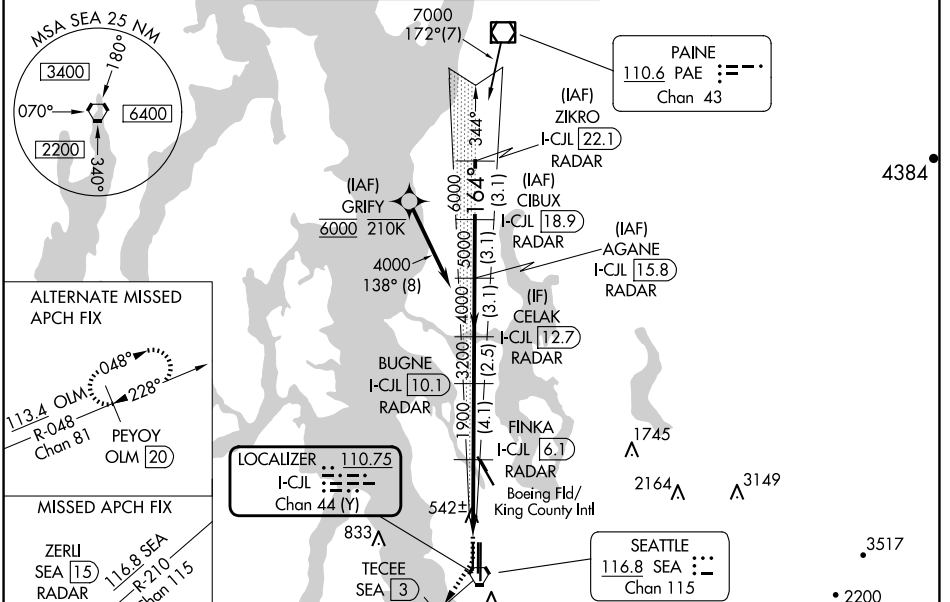
DME or RADAR required. From GRIFY: RNAV 1-GPS required.

Simultaneous approach authorized with Rwy 16L and 16C. Simultaneous operations require use of vertical guidance, maintain last assigned altitude until established on glideslope.

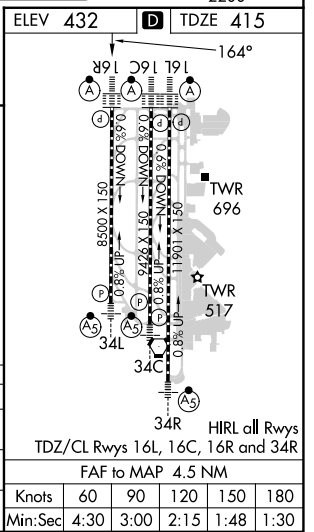
ALSF-2

MISSED APPROACH: Climb to 900 then climb on heading 195° and on SEA VORTAC R-210 to cross TECEE/SEA 3 DME/RADAR at or below 2000 then climb to 5000 on SEA VORTAC R-210 to ZERLI/SEA 15 DME/RADAR and hold, continue climb-in-hold to 5000.

D-ATIS 118.0	SEATTLE APP CON 133.65 273.45	SEATTLE TOWER 119.9 239.3 (Rwys 16L, 16C, 34C, 34R) 120.95 239.3 (Rwys 16R, 34L)	GND CON 121.7	CLNC DEL 128.0	CPDLC
------------------------	---	--	-------------------------	--------------------------	-------



900	TECEE SEA [3] 2000	5000	ZERLI SEA [15]
*LOC only			
I-CJL [1.6]	*I-CJL [2.6]	FINKA I-CJL [6.1] RADAR	BUGNE I-CJL [10.1] RADAR
		CELAK I-CJL [12.7] RADAR	AGANE I-CJL [15.8] RADAR
		CIBUX I-CJL [18.9] RADAR	ZIKRO I-CJL [22.1] RADAR
1 NM 3.5 NM 4.1 NM 2.5 NM 3.1 NM 3.1 NM 3.1 NM			
CATEGORY	A	B	C
S-ILS 16R	615/18 200 (200-½)		
S-LOC 16R	800/24	385 (400-½)	800/35 385 (400-¾)
CIRCLING	1000-1	568 (600-1)	1000-1½ 568 (600-½)



NW-1, 23 JAN 2025 to 20 FEB 2025

NW-1, 23 JAN 2025 to 20 FEB 2025