

LOC/DME I-SEA <b>110.3</b> Chan <b>40</b>	APP CRS <b>344°</b>	Rwy Idg TDZE Apt Elev	34R <b>11901</b> <b>372</b> <b>432</b>	34C <b>9426</b> <b>387</b> <b>432</b>
---	------------------------	-----------------------------	---	--

# ILS or LOC RWY 34R

SEATTLE-TACOMA INTL (SEA)

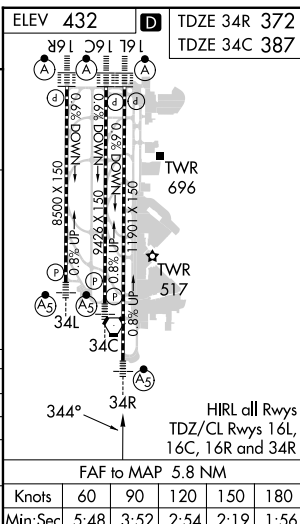
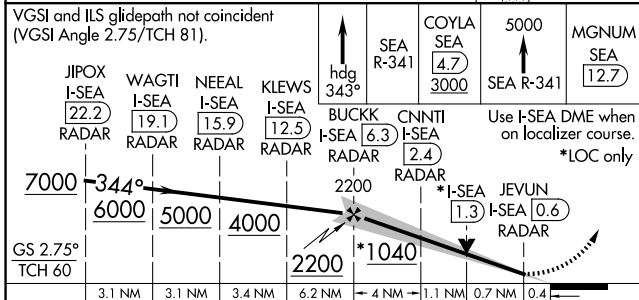
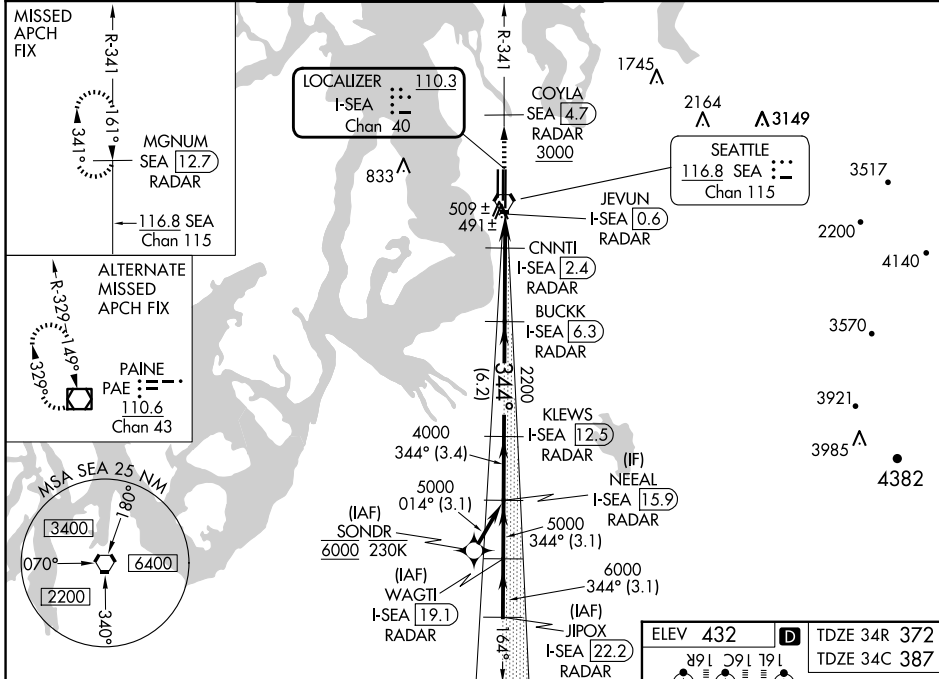
From SONDR: RNAV 1-GPS required. DME or RADAR required.

MALS Rwy 34R/C

MISSED APPROACH: Climb on heading 343° and outbound on SEA VORTAC R-341 to cross COYLA/SEA 4.7 DME/RADAR at or above 3000 then climb to 5000 on SEA VORTAC R-341 to MGNM/SEA 12.7 DME/RADAR and hold, continue climb-in-hold to 5000.

Inop table does not apply to Sidestep 34C Cats A/B. Simultaneous approach authorized with Rwy 34L.

D-ATIS <b>118.0</b>	SEATTLE APP CON <b>133.65 273.45</b>	SEATTLE TOWER <b>119.9 239.3</b> (Rwys 16L, 16C, 34C, 34R) <b>120.95 239.3</b> (Rwys 16R, 34L)	GND CON <b>121.7</b>	CLNC DEL <b>128.0</b>	CPDLC
------------------------	---	--	-------------------------	--------------------------	-------



GS 2.75° TCH 60	3.1 NM	3.1 NM	3.4 NM	6.2 NM	4 NM	1.1 NM	0.7 NM	0.4
CATEGORY	A		B		C		D	
S-ILS 34R	572/18 200 (200-½)							
S-LOC 34R	740/24		368 (400-½)		740/35		368 (400-¾)	
SIDESTEP 34C	760/55 373 (400-1)				760-1½ 373 (400-1½)			
CRCLING	1000-1 568 (600-1)		1000-1½ 568 (600-1½)		1000-2 568 (600-2)			

NW-1, 23 JAN 2025 to 20 FEB 2025

NW-1, 23 JAN 2025 to 20 FEB 2025