


JAWBN SEVEN ARRIVAL

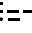
AL-582 (FAA)

SEATTLE, WASHINGTON

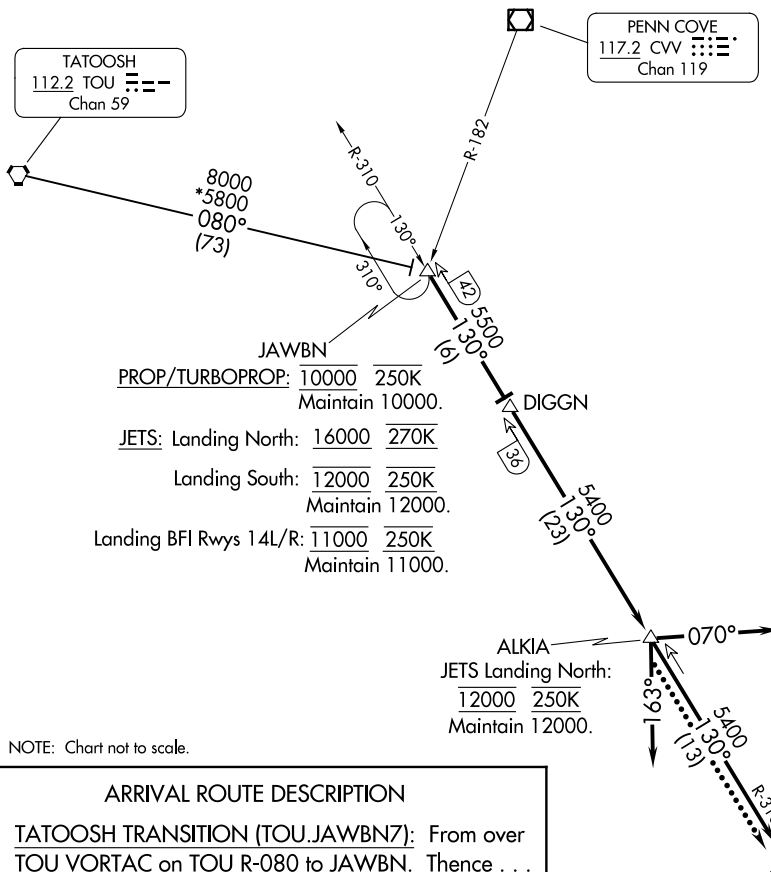
RADAR and DME required.

SEATTLE APP CON
125.6 273.45
BFI ATIS
127.75
KTCM D-ATIS
135.825 270.1
SEA D-ATIS
118.0

ROSLN 

TATOOSH
112.2 TOU 
Chan 59

PENN COVE
117.2 CVV 
Chan 119

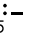


JAWBN
PROP/TURBOPROP: 10000 250K
Maintain 10000.
JETS: Landing North: 16000 270K
Landing South: 12000 250K
Maintain 12000.
Landing BFI Rwy 14L/R: 11000 250K
Maintain 11000.

ALKIA
JETS Landing North:
12000 250K
Maintain 12000.

BOEING FLD/KING COUNTY INTL

SEATTLE-TACOMA INTL

SEATTLE
116.8 SEA 
Chan 115

MCCHORD FLD
⊙ (JOINT BASE LEWIS-MCCHORD)

NOTE: Chart not to scale.

ARRIVAL ROUTE DESCRIPTION

TATOOSH TRANSITION (TOU.JAWBN7): From over TOU VORTAC on TOU R-080 to JAWBN. Thence . . .
. . . from over JAWBN on SEA R-310 to DIGGN then on SEA R-310 to ALKIA thence . . .

LANDING SOUTH: depart ALKIA heading 070° for RADAR vectors to final approach course.

LANDING NORTH: depart ALKIA heading 163° for RADAR vectors to final approach course.

LANDING MCCHORD FLD: depart ALKIA proceed direct SEA VORTAC.

LOST COMMUNICATIONS: After ALKIA, proceed direct SEA VORTAC.

JAWBN SEVEN ARRIVAL

SEATTLE, WASHINGTON