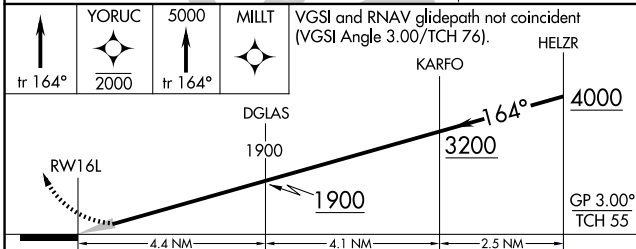
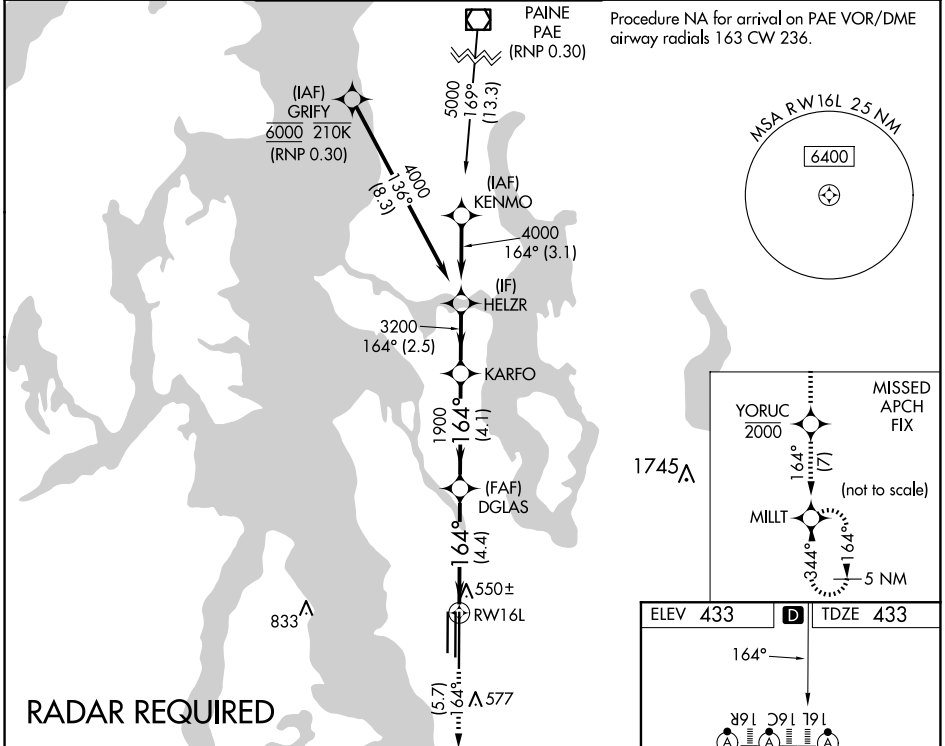


APP CRS	Rwy Idg	<b>11901</b>
<b>164°</b>	TDZE	<b>433</b>
	Apt Elev	<b>433</b>

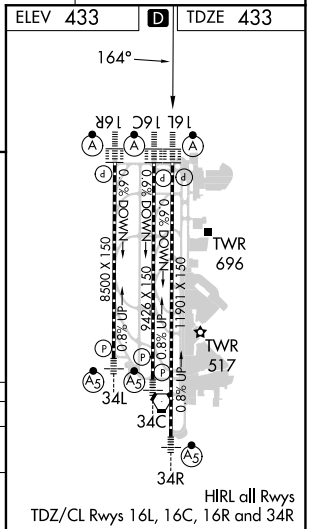
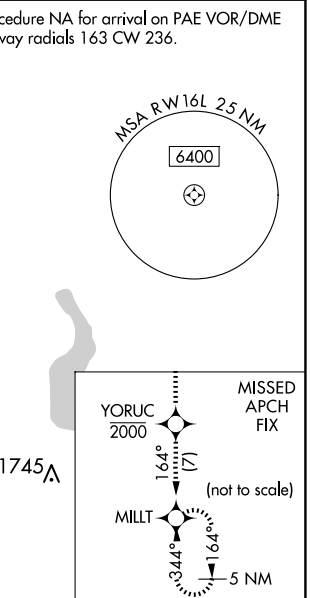
# RNAV (RNP) Z RWY 16L

SEATTLE-TACOMA INTL (SEA)

<p><b>▼</b> For uncompensated Baro-VNAV systems, procedure NA below -6°C (22°F) or above 54°C (130°F). Simultaneous approach authorized with Rwy 16R. GPS required. Use of FD or AP providing RNAV track guidance required during simultaneous operations. For inop ALS, increase RNP 0.30 all Cats visibility to 1 3/8 mile.</p>	<p>ALSF-2</p>	<p>MISSED APPROACH: Climb on track 164° to cross YORUC at or below 2000, then climb to 5000 on track 164° to MILLT and hold, continue climb-in-hold to 5000.</p>			
		D-ATIS	SEATTLE APP CON	SEATTLE TOWER	GND CON
<b>118.0</b>	<b>133.65 273.45</b>	<b>119.9 239.3</b> (Rwys 16L, 16C, 34C, 34R) <b>120.95 239.3</b> (Rwys 16R, 34L)	<b>121.7</b>	<b>128.0</b>	



CATEGORY	A	B	C	D
RNP 0.30 DA		842/45	409 (500-7/8)	
<b>AUTHORIZATION REQUIRED</b>				



NW-1, 23 JAN 2025 to 20 FEB 2025

NW-1, 23 JAN 2025 to 20 FEB 2025