

# RNAV (GPS) Y RWY 16R

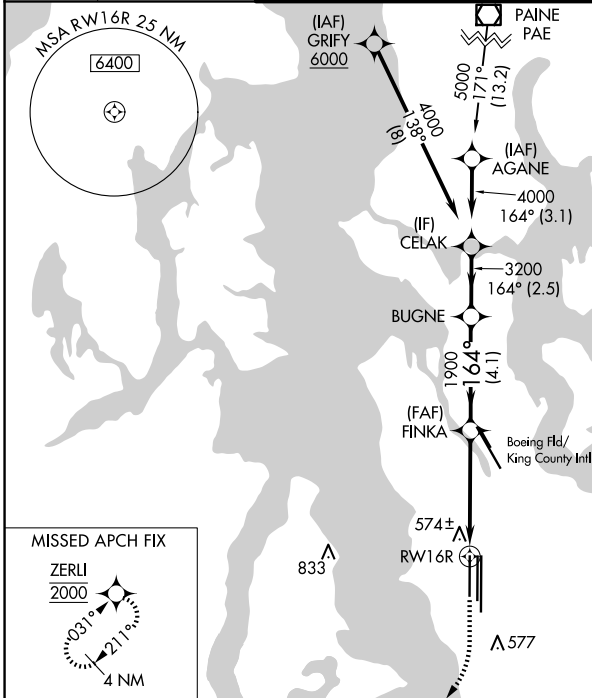
SEATTLE-TACOMA INTL (SEA)

WAAS CH <b>86910</b> <b>W16D</b>	APP CRS <b>164°</b>	Rwy Idg TDZE Apt Elev	<b>8500</b> <b>415</b> <b>433</b>
--	------------------------	-----------------------------	---

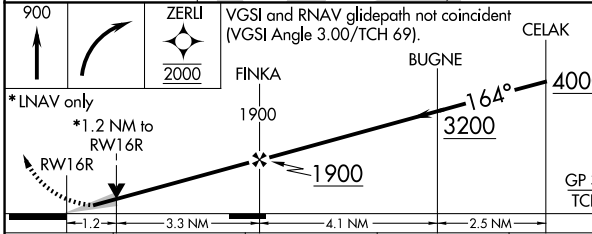
**▼** For uncompensated Baro-VNAV systems, LNAV/VNAV NA below -6°C (22°F) or above 54°C (130°F). Simultaneous approach authorized with Rwy 16L. DME/DME RNP-0.3 NA. LNAV procedure NA during simultaneous operations. Use of FD or AP providing RNAV track guidance required during simultaneous operations.

**ALSIF-2**  
**MISSED APPROACH:** Climb to 900 then climbing right turn direct ZERLI to cross ZERLI at 2000 and hold.

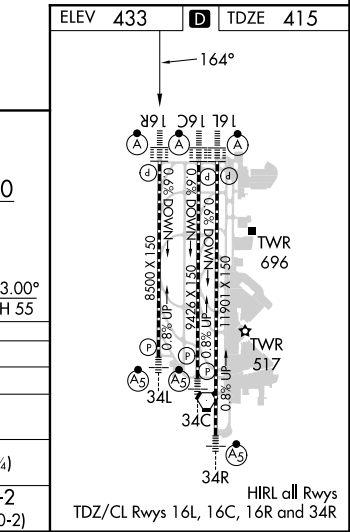
D-ATIS <b>118.0</b>	SEATTLE APP CON <b>133.65 273.45</b>	SEATTLE TOWER <b>119.9 239.3</b> (Rwys 16L, 16C, 34C, 34R) <b>120.95 239.3</b> (Rwys 16R, 34L)	GND CON <b>121.7</b>	CLNC DEL <b>128.0</b>	CPDLC
------------------------	---	--	-------------------------	--------------------------	-------



Procedure NA for arrival on PAE VOR/DME airway radials 163 CW 236.



CATEGORY	A	B	C	D
LPV DA		615/18	200 (200-½)	
LNAV/VNAV DA		760/32	345 (400-⅝)	
LNAV MDA	840/24	425 (500-½)	840/40	425 (500-¾)
<b>C</b> CIRCLING	1000-1	567 (600-1)	1000-1½ 567 (600-1½)	1000-2 567 (600-2)



NW-1, 23 JAN 2025 to 20 FEB 2025

NW-1, 23 JAN 2025 to 20 FEB 2025