

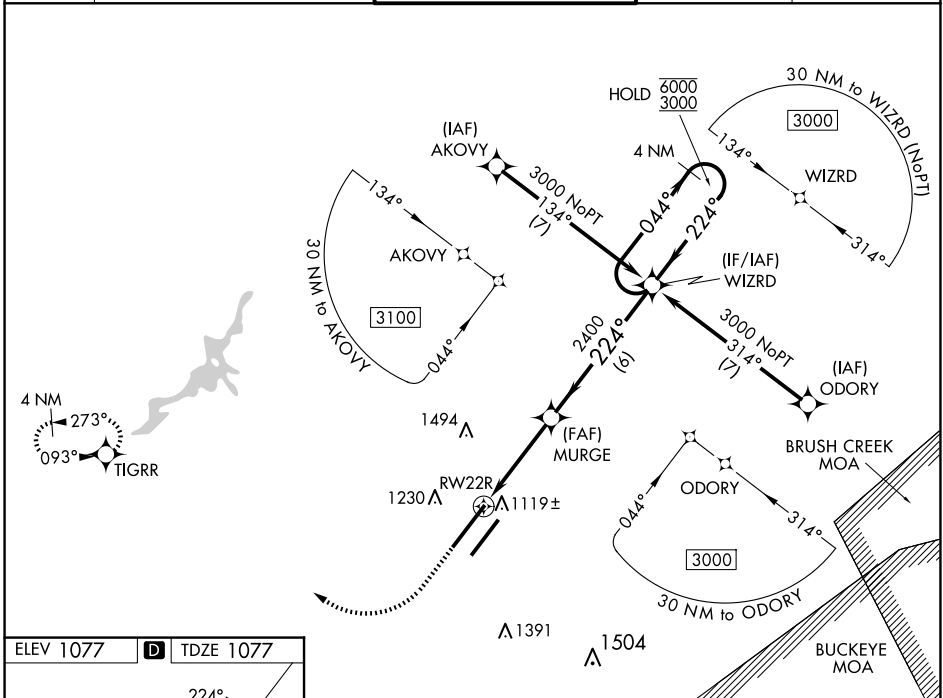
WAAS CH 40214 W22A	APP CRS 224°	Rwy Idg 10701 TDZE 1077 Apt Elev 1077
--	------------------------	--

RNAV (GPS) RWY 22R

WILMINGTON AIR PARK (ILN)

RNP APCH - GPS.		ALSF-2	MISSED APPROACH: Climb to 1500 then right turn 3000 direct TIGRR and hold.
<p>⚠ For uncompensated Baro-VNAV systems, LNAV/VNAV NA below -19°C or above 54°C. For inop ALS, increase LNAV/VNAV all Cats visibility to RVR 4500.</p>		A	

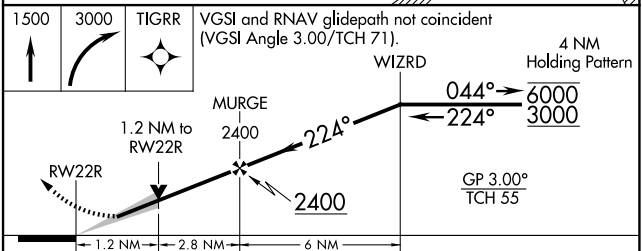
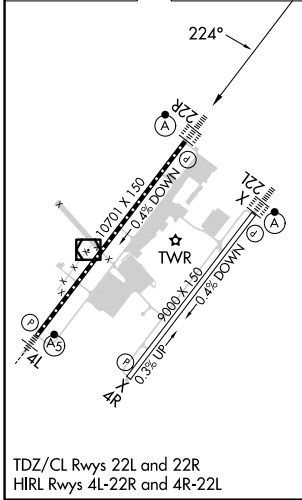
D-ATIS 124.925	COLUMBUS APP CON 118.85 269.275	WILMINGTON TOWER 119.475	GND CON 121.6	CLNC DEL 128.85
--------------------------	---	------------------------------------	-------------------------	---------------------------



EC-2, 23 JAN 2025 to 20 FEB 2025

EC-2, 23 JAN 2025 to 20 FEB 2025

ELEV 1077	D	TDZE 1077
-----------	----------	-----------



CATEGORY	A	B	C	D
LPV DA		1277/18	200 (200-½)	
LNAV/VNAV DA		1393/24	316 (400-½)	
LNAV MDA	1520/24	443 (500-½)	1520/45	443 (500-¾)
C CIRCLING	1560-1	483 (500-1)	1860-2¼ 783 (800-2¼)	1860-2½ 783 (800-2½)