

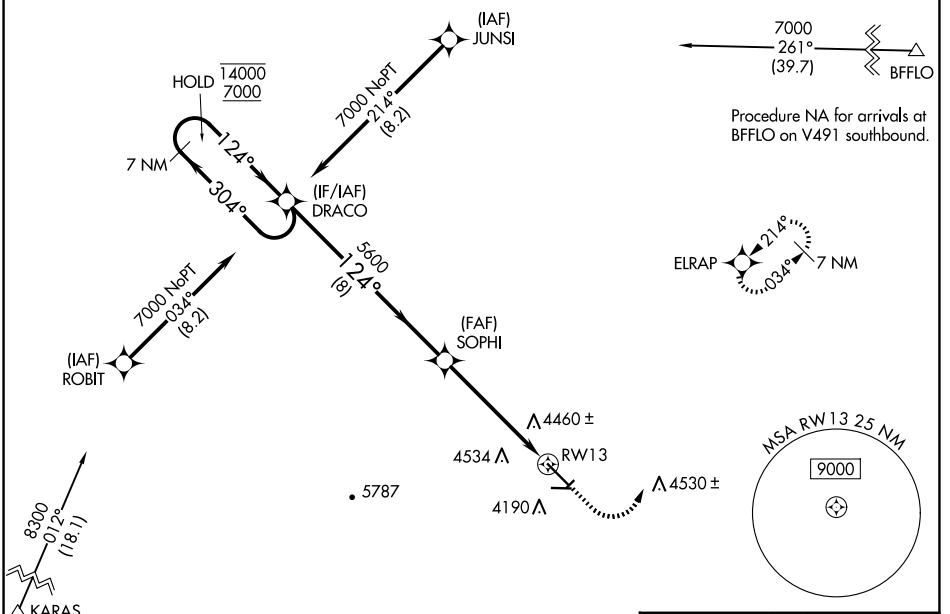
WAAS CH 70621 W13A	APP CRS 124°	Rwy Idg TDZE Apt Elev	6401 3884 3933
--	------------------------	-----------------------------	---

RNAV (GPS) RWY 13

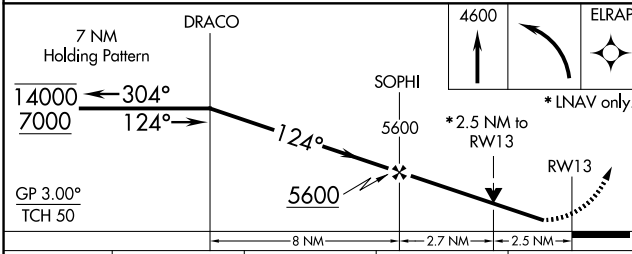
BLACK HILLS-CLYDE ICE FLD (SPF)

RNP APCH.	<p>▽ Circling NA to Rwy's 4, 8, 22 and 26. Rwy 13 helicopter visibility reduction below 3/4 SM NA. For uncompensated Baro-VNAV systems, LNAV/VNAV NA below -22°C or above 54°C.</p> <p>⚠ MISSED APPROACH: Climb to 4600 then climbing left turn to ELRAP and hold, continue climb-in-hold to 7000.</p>
-----------	--

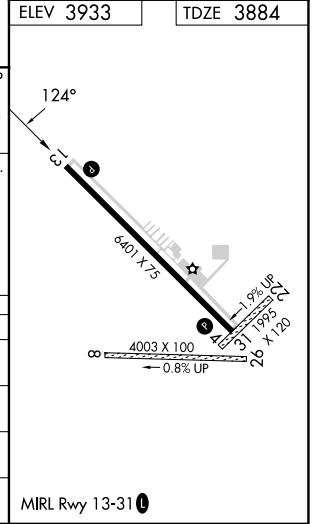
AWOS-3 118.325	ELLSWORTH APP CON* 119.5 259.1	GCO 121.725	UNICOM 122.7 (CTAF) 📻
--------------------------	--	-----------------------	--



Procedure NA for arrivals at KARAS on V86 northwest bound.



CATEGORY	A	B	C	D
LPV DA	4219-1 1/8	335 (300-1 1/8)		NA
LNAV/VNAV DA	4852-4	968 (1000-4)		NA
LNAV MDA	4720-1 836 (800-1)	4720-1 1/4 836 (800-1 1/4)	4720-2 1/2 836 (800-2 1/2)	NA
📻 CIRCLING	4760-1 1/4 827 (900-1 1/4)	4920-1 1/2 987 (1000-1 1/2)	5540-3 1607 (1700-3)	NA



NC-1, 23 JAN 2025 to 20 FEB 2025

NC-1, 23 JAN 2025 to 20 FEB 2025