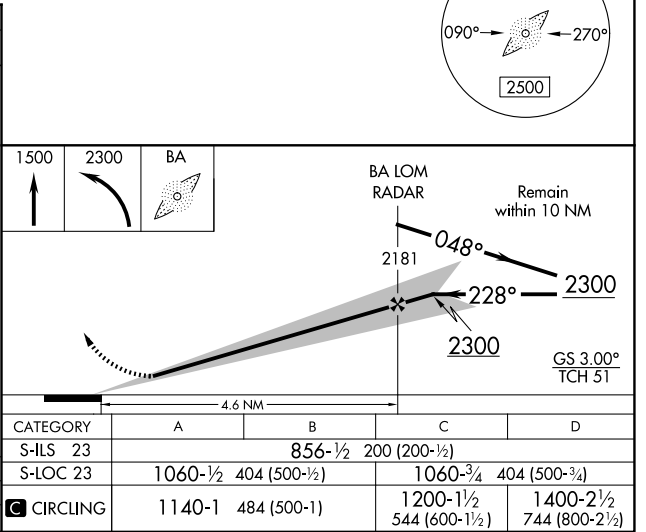
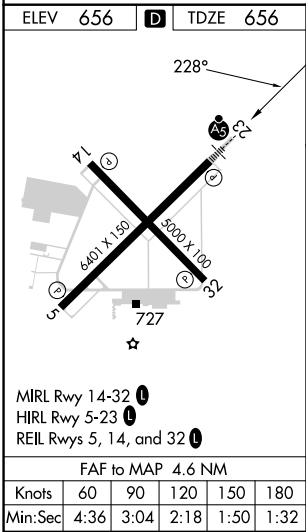
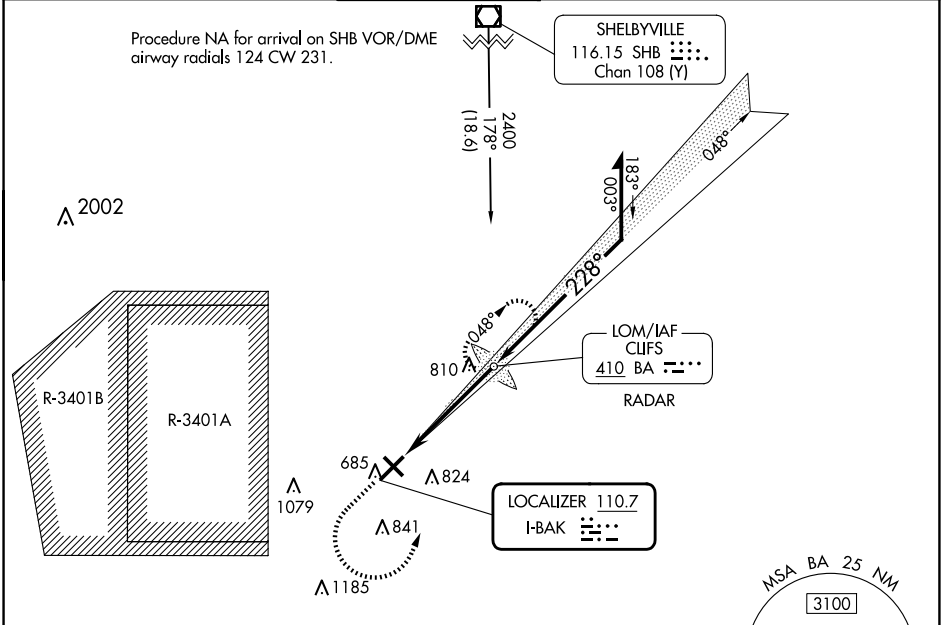


LOC I-BAK 110.7	APP CRS 228°	Rwy ldg TDZE Apt Elev	6401 656 656
---------------------------	------------------------	-----------------------------	---

ILS or LOC RWY 23

COLUMBUS MUNI (BAK)

ADF or RADAR required.		MALSR		MISSED APPROACH: Climb to 1500 then climbing left turn to 2300 direct CLIFs LOM and hold, continue climb-in hold to 2300.	
NA For inop ALS increase S-LOC 23 Cats C/D visibility to 1 1/2 SM.					
AWOS-3 119.75	INDIANAPOLIS APP CON 134.85 317.8	COLUMBUS TOWER ★ 118.6 (CTAF) 0	GND CON 121.6	CLNC DEL 134.85 (When twr closed)	UNICOM 122.95



EC-2, 23 JAN 2025 to 20 FEB 2025

EC-2, 23 JAN 2025 to 20 FEB 2025