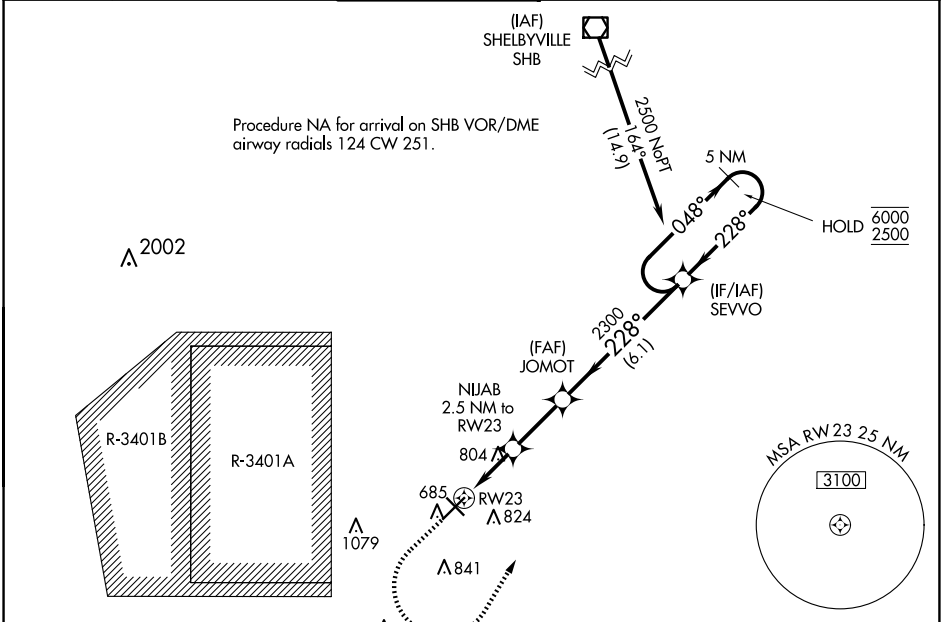


WAAS CH 90399 W23A	APP CRS 228°	Rwy Idg TDZE 656 Apt Elev 656	6401
--	------------------------	---	-------------

RNAV (GPS) RWY 23

COLUMBUS MUNI (BAK)

RNP APCH - GPS.		MALSR		MISSED APPROACH: Climb to 1200, then climbing left turn to 2500 direct SEVVO and hold.	
For inop ALS, increase LNAV Cat C/D visibility to 1½ SM.					
AWOS-3 119.75	INDIANAPOLIS APP CON 134.85 317.8	COLUMBUS TOWER ★ 118.6 (CTAF)	GND CON 121.6	CLNC DEL 134.85 (When twr closed)	UNICOM 122.95



EC-2, 23 JAN 2025 to 20 FEB 2025

EC-2, 23 JAN 2025 to 20 FEB 2025

ELEV 656		TDZE 656
----------	--	----------

1200	2500	SEVVO
------	------	-------

CATEGORY	A	B	C	D
LPV DA	906-½ 250 (300-½)			
LNAV MDA	1060-½ 404 (500-½)	1060-¾ 404 (500-¾)		

MIRL Rwy 14-32
HIRL Rwy 5-23
REIL Rws 5, 14, and 32