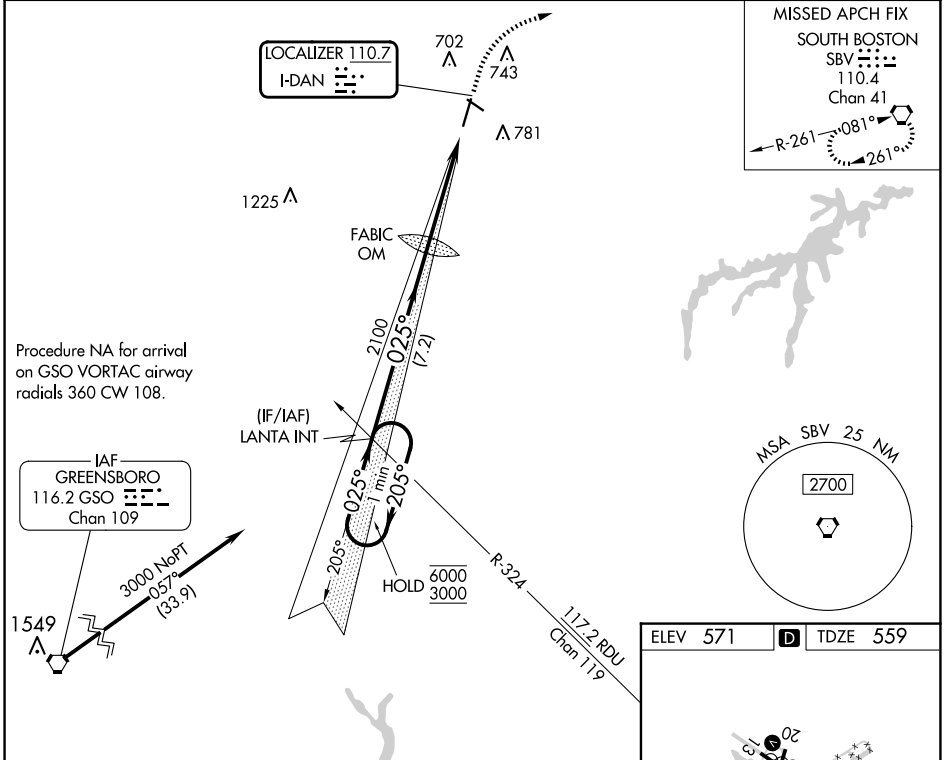


LOC I-DAN 110.7	APP CRS 025°	Rwy Idg TDZE Apt Elev	5600 559 571
---------------------------	------------------------	-----------------------------	-----------------------------------------

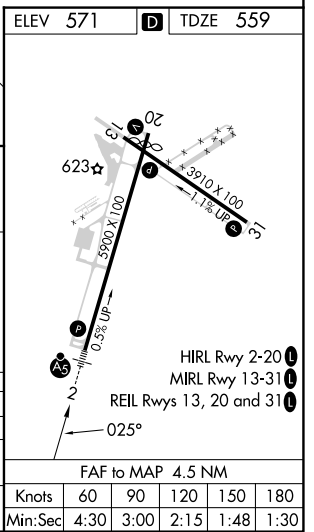
ILS or LOC RWY 2

DANVILLE RGNL (DAN)

<p>For inop ALS, increase S-LOC 2 Cat C/D visibility to 1 3/8 SM.</p>	MALSR	<p>MISSED APPROACH: Climb to 2000 then climbing right turn to 3000 direct SBV VORTAC and hold.</p>
	ASOS 128.125	



<p>One Minute Holding Pattern</p> <p>6000 ← 205°</p> <p>3000 ← 025°</p> <p>GS 3.00° TCH 54</p>	LANTA INT	FABIC OM	2000	3000	SBV
	7.2 NM	4.5 NM	2019		
CATEGORY	A	B	C	D	
S-ILS 2	759-1/2		200 (200-1/2)		
S-LOC 2	1020-1/2	461 (500-1/2)	1020-1	461 (500-1)	
CIRCLING	1120-1	549 (600-1)	1120-1/2	1200-2	629 (700-2)



NE-3, 23 JAN 2025 to 20 FEB 2025

NE-3, 23 JAN 2025 to 20 FEB 2025