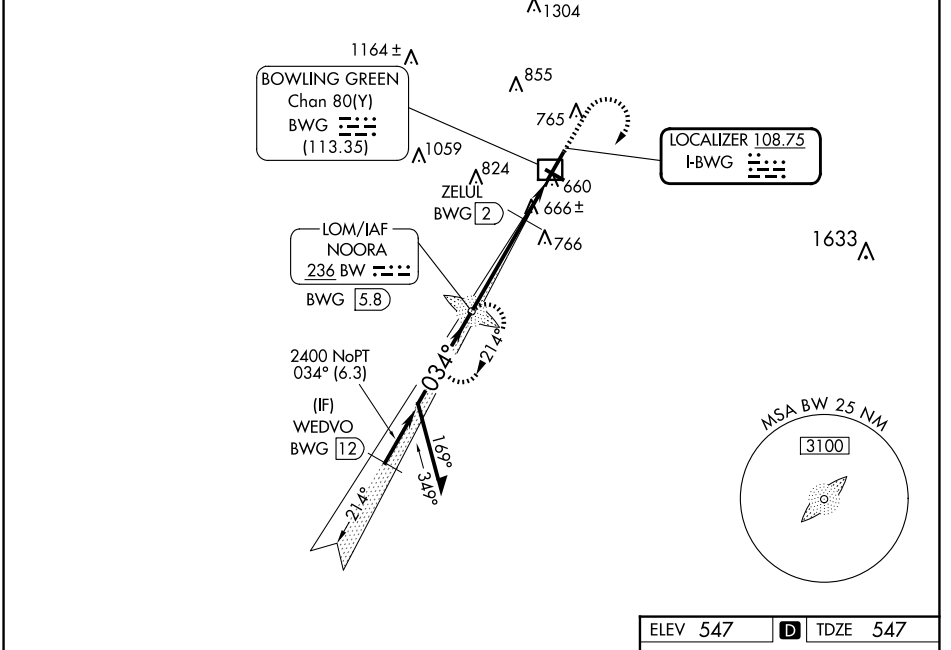


LOC I-BWG	APP CRS	Rwy Idg	6500
108.75	034°	TDZE	547
		Apt Elev	547

ILS Y or LOC Y RWY 3

BOWLING GREEN-WARREN COUNTY RGNL (BWG)

ADF required. RADAR required for procedure entry.		MISSED APPROACH: Climb to 2000 then climbing right turn to 2400 direct NOORA LOM and hold.
	Circling Rwy 30 NA at night. † DME from BWG DME.	
ASOS 127.825	MEMPHIS CENTER 133.85 285.5	UNICOM 123.0 (CTAF) 0



* 1200 when using GLW altimeter setting.

Remain within 10 NM

GS 3.00° TCH 44

CATEGORY	A	B	C	D
S-ILS 3	797- ³ / ₄		250 (300- ³ / ₄)	
S-LOC 3*	1120-1	573 (600-1)	1120-1 ⁵ / ₈	573 (600-1 ⁵ / ₈)
CIRCLING	1120-1	573 (600-1)	1160-1 ³ / ₄ 613 (700-1 ³ / ₄)	1200-2 653 (700-2)
ZELUL FIX MINIMUMS† (DME REQUIRED)				
S-LOC 3	920-1		373 (400-1)	
CIRCLING	1080-1 533 (600-1)	1120-1 573 (600-1)	1160-1 ³ / ₄ 613 (700-1 ³ / ₄)	1200-2 653 (700-2)

ELEV 547 TDZE 547

REIL Rwys 3 and 21
MIRL Rwy 12-30
HIRL Rwy 3-21

FAF to MAP 5.4 NM

Knots	60	90	120	150	180
Min:Sec	5:24	3:36	2:42	2:10	1:48

SE-1, 23 JAN 2025 to 20 FEB 2025

SE-1, 23 JAN 2025 to 20 FEB 2025