

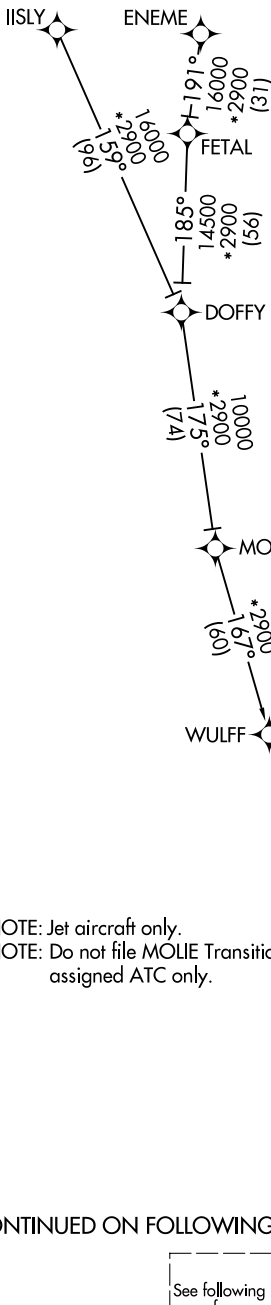
FNTSY ONE ARRIVAL (RNAV) Transition Routes

KEY WEST, FLORIDA

RNAV 1 - DME/DME/IRU or GPS.

RADAR required.

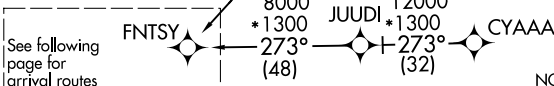
NAVY KEY WEST APP CON *
 124.025 313.7
 EYW ATIS
 119.675
 KNQX ATIS *
 307.025



- CYAAA TRANSITION (CYAAA.FNTSY1)
- EBAYY TRANSITION (EBAYY.FNTSY1)
- ENEME TRANSITION (ENEME.FNTSY1)
- IISLY TRANSITION (IISLY.FNTSY1)
- MAYKO TRANSITION (MAYKO.FNTSY1)
- MOLIE TRANSITION (MOLIE.FNTSY1)

NOTE: Jet aircraft only.
 NOTE: Do not file MOLIE Transition - to be assigned ATC only.

(CONTINUED ON FOLLOWING PAGE)



NOTE: Chart not to scale.

FNTSY ONE ARRIVAL (RNAV) Transition Routes

KEY WEST, FLORIDA

RNAV 1 - DME/DME/IRU or GPS.
RADAR required.

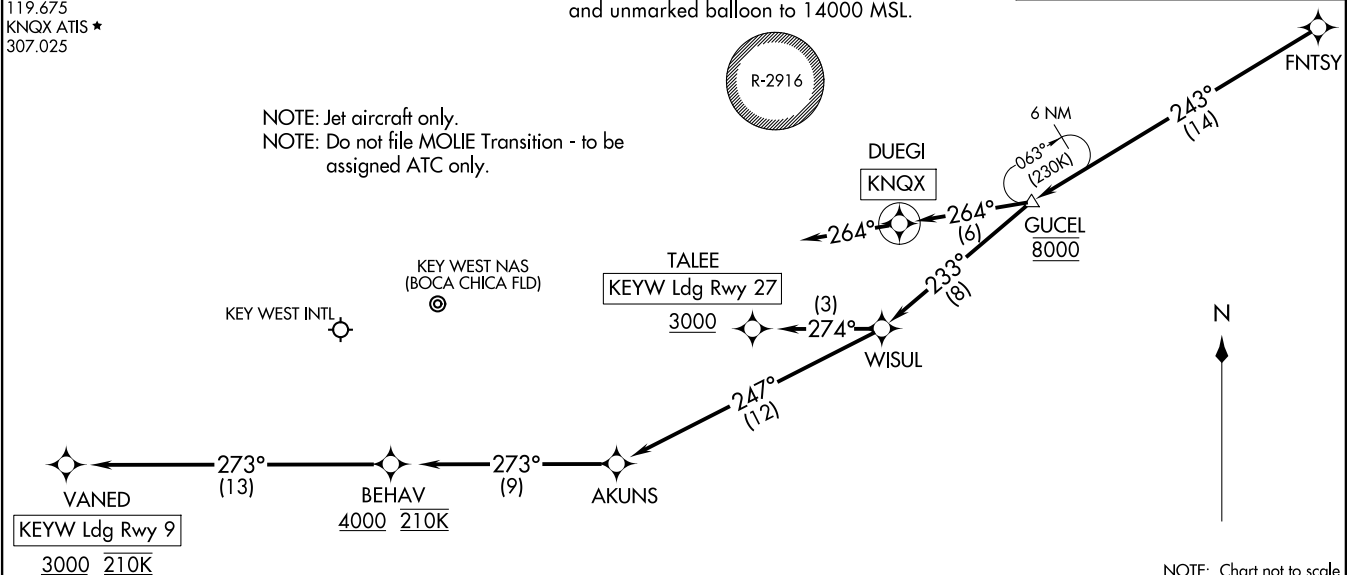
RESTRICTED AREA R-2916 - Caution cable and unmarked balloon to 14000 MSL.

NAVY KEY WEST APP CON★
124.025 313.7
EYW ATIS
119.675
KNQX ATIS ★
307.025

NOTE: Jet aircraft only.
NOTE: Do not file MOLIE Transition - to be assigned ATC only.

FNTSY ONE ARRIVAL(RNAV) (FNTSY.FNTSY1) 31OCT24

FNTSY ONE ARRIVAL(RNAV) (FNTSY.FNTSY1) 24305 AL-606 (FAA)



NOTE: Chart not to scale.

ARRIVAL ROUTE DESCRIPTION

KEYW: From FNTSY on track 243° to cross GUCEL at 8000, then on track 233° to WISUL.
LANDING KEYW RUNWAY 9: From WISUL on track 247° to AKUNS, then on track 273° to cross BEHAV at or above 4000 and at 210K, then on track 273° to cross VANED at or above 3000 and at 210K. Expect RNAV (GPS) RWY 9 approach.
LANDING KEYW RUNWAY 27: From WISUL on track 274° to cross TALEE at or above 3000. Expect RNAV (GPS) RWY 27 approach.
LANDING KNQX: From FNTSY on track 243° to cross GUCEL at 8000, then on track 264° to DUEGI, then on track 264°. Expect RADAR vectors to final approach course.

KEY WEST, FLORIDA

KEY WEST, FLORIDA