

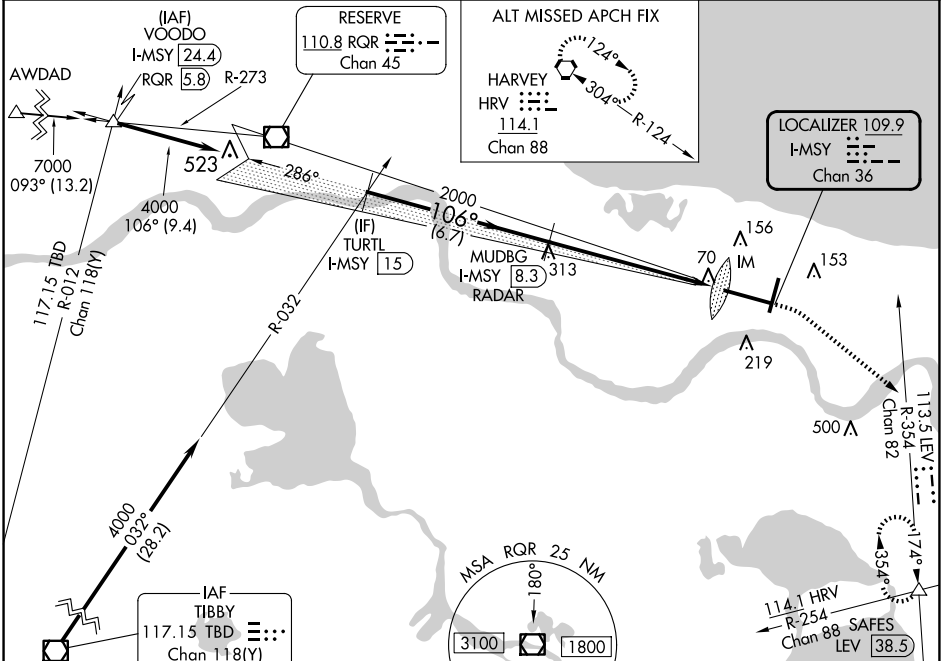
LOC/DME I-MSY <b>109.9</b> Chan <b>36</b>	APP CRS <b>106°</b>	Rwy Idg <b>9800</b> TDZE <b>4</b> Apt Elev <b>4</b>
---	------------------------	---

# ILS RWY 11 (SA CAT I)

LOUIS ARMSTRONG NEW ORLEANS INTL (MSY)

RADAR or DME required. Requires specific OPSPEC, MSPEC, or LOA approval and use of HUD to DH.		ALSF-2 	MISSED APPROACH: Climb to 800 then climbing right turn to 2000 on heading 130° and on LEV VORTAC R-354 to SAFES INT/LEV 38.5 DME and hold.	
--	--	------------	--	--

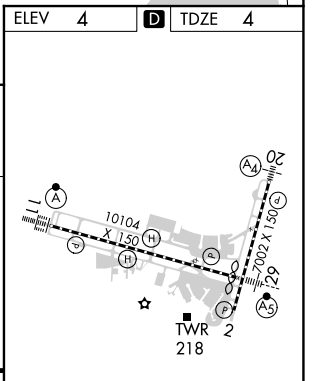
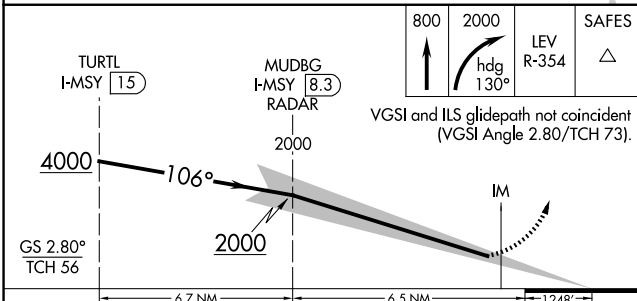
D-ATIS <b>127.55</b>	NEW ORLEANS APP CON WEST <b>125.5 350.35</b> EAST <b>133.15 290.3</b>	NEW ORLEANS TOWER <b>119.5 254.3</b>	GND CON <b>121.9 273.525</b>	CLNC DEL <b>120.925</b>	CPDLC
-------------------------	---	---	---------------------------------	----------------------------	-------



SC-4, 23 JAN 2025 to 20 FEB 2025

SC-4, 23 JAN 2025 to 20 FEB 2025

ELEV 4	<b>D</b> TDZE 4
--------	-----------------



CATEGORY	A	B	C	D
S-ILS 11	RA 150/14 150 DA 154			
<b>SA CATEGORY I ILS - SPECIAL AIRCREW &amp; AIRCRAFT CERTIFICATION REQUIRED</b>				

RLS Rwy 2  
TDZ/CL Rwy 11  
HIRL All Runways