

| | | |
|--|------------------------|---|
| WAAS CH 49220 W02A | APP CRS 016° | Rwy Idg 7002 TDZE 2 Apt Elev 4 |
|--|------------------------|---|

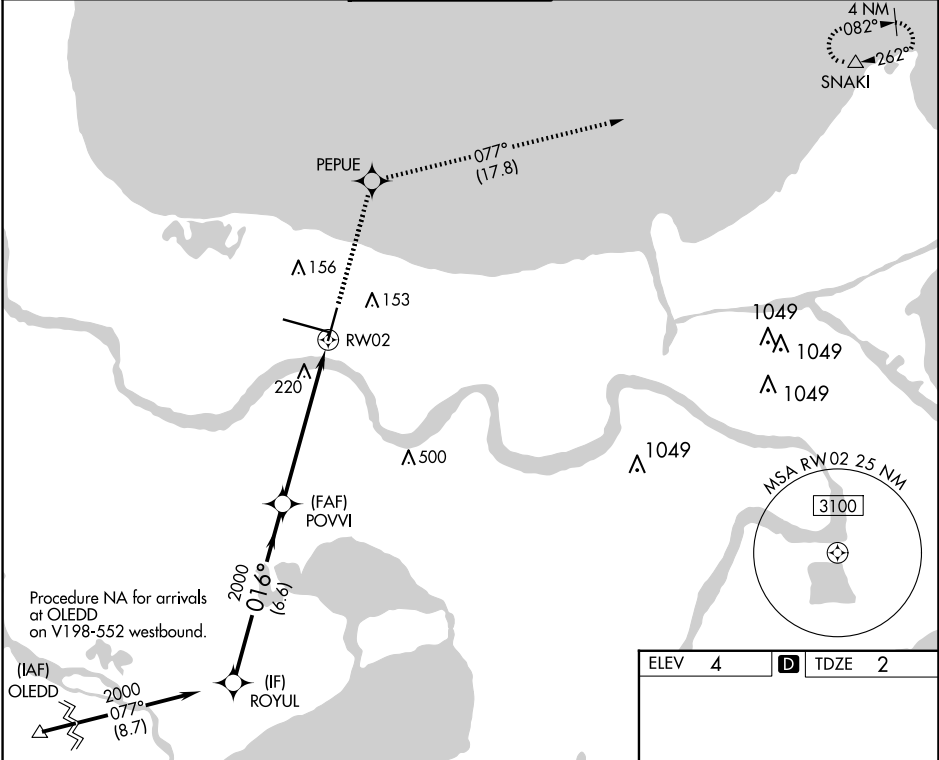
RNAV (GPS) RWY 2

LOUIS ARMSTRONG NEW ORLEANS INTL (MSY)

RNP APCH - GPS. MISSED APPROACH: Climb to 3000 direct PEPUE and on track 077° to SNAKI and hold.

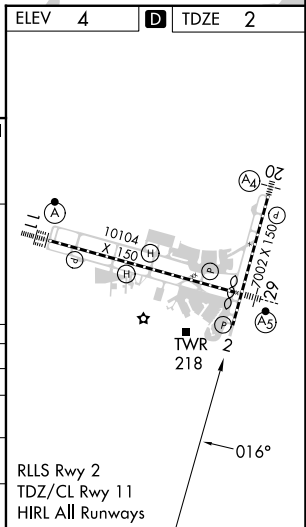
▼ Rwy 2 helicopter visibility reduction below RVR 4000 NA. For uncompensated Baro-VNAV systems, LNAV/VNAV NA below 0°C or above 54°C.

| | | | | | |
|-------------------------|---|---|---------------------------------|----------------------------|-------|
| D-ATIS 127.55 | NEW ORLEANS APP CON WEST 125.5 350.35 EAST 133.15 290.3 | NEW ORLEANS TOWER 119.5 254.3 | GND CON 121.9 273.525 | CLNC DEL 120.925 | CPDLC |
|-------------------------|---|---|---------------------------------|----------------------------|-------|



VGSI and RNAV glidepath not coincident (VGSI Angle 3.00/TCH 52).

| | | | |
|--------------------|--------|----------------|---------------------------------------|
| ROYUL | POVVI | PEPUE | SNAKI |
| 2000 | 2000 | 3000 | tr 077° |
| GP 3.00° TCH 56 | 016° | 1.3 NM to RW02 | |
| 6.6 NM | | 4.8 NM | 1.3 NM |
| CATEGORY | A | B | C |
| LPV DA | 398/60 | | 396 (400-1¼) |
| LNAV/VNAV DA | 379/55 | | 377 (400-1) |
| LNAV MDA | 480/55 | 478 (500-1) | 480-1⅜ 478 (500-1⅝) |
| CIRCLING | 520-1 | 516 (600-1) | 580-1½ 576 (600-1½) 580-2 576 (600-2) |



SC-4, 23 JAN 2025 to 20 FEB 2025

SC-4, 23 JAN 2025 to 20 FEB 2025