

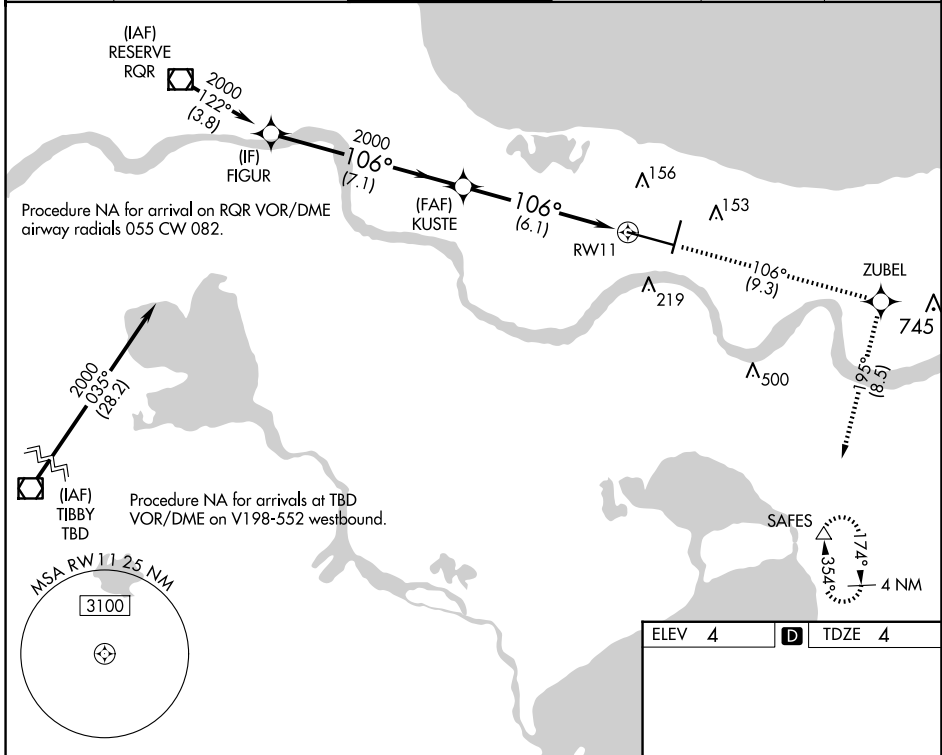
RNAV (RNP) Z RWY 11

LOUIS ARMSTRONG NEW ORLEANS INTL (MSY)

APP CRS	Rwy Idg	9800
106°	TDZE	4
	Apt Elev	4

RNP AR APCH - GPS.	ALSF-2	MISSED APPROACH: Climb to 2000 on track 106° to ZUBEL and on track 195° to SAFES and hold.
▼ For uncompensated Baro-VNAV systems, procedure NA below -1°C or above 54°C. For inop ALS, increase RNP 0.30 all Cats visibility to RVR 5500.		

D-ATIS	NEW ORLEANS APP CON	NEW ORLEANS TOWER	GND CON	CLNC DEL	CPDLC
127.55	WEST 125.5 350.35 EAST 133.15 290.3	119.5 254.3	121.9 273.525	120.925	



SC-4, 23 JAN 2025 to 20 FEB 2025

SC-4, 23 JAN 2025 to 20 FEB 2025

VGSI and RNAV glidepath not coincident (VGSI Angle 2.80/TCH 73).	2000	↑	tr 106°	ZUBEL	↑	tr 195°	SAFES	△
FIGUR	2000	106°	2000	KUSTE	2000	RW11		
GP 3.00°								
TCH 55								
	7.1 NM		6.1 NM					
CATEGORY	A	B	C	D				
RNP 0.30 DA	367/35		363 (400-5/8)					
AUTHORIZATION REQUIRED								

