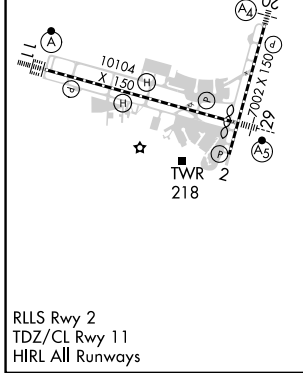
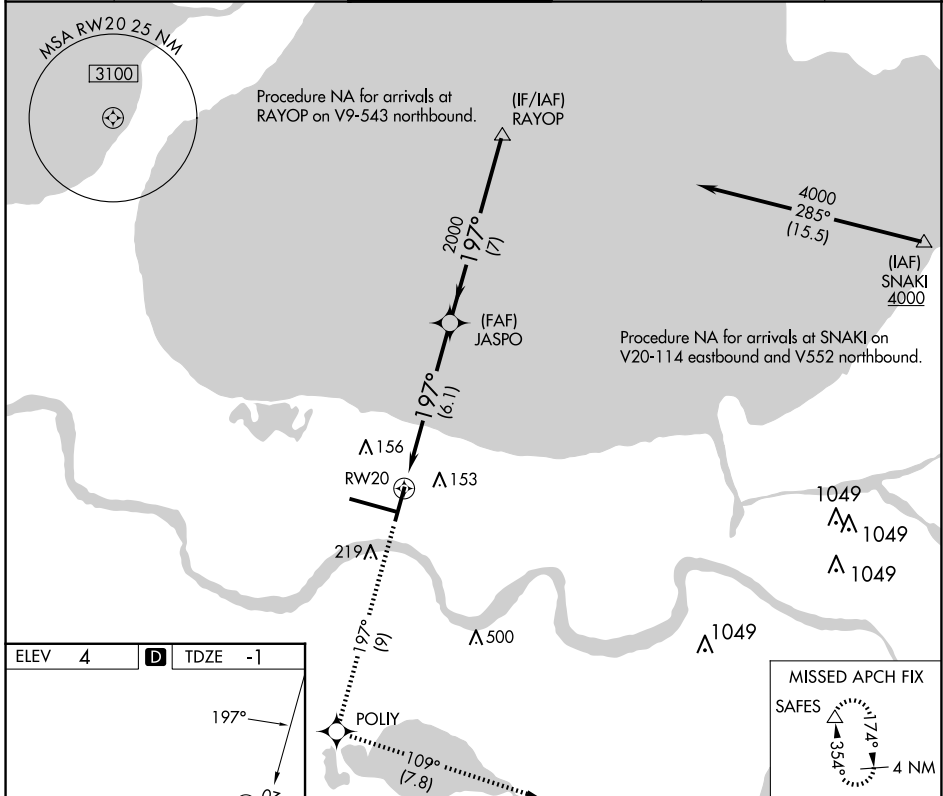


APP CRS 197°	Rwy Idg 6948
	TDZE -1
	Apt Elev 4

RNAV (RNP) Z RWY 20

LOUIS ARMSTRONG NEW ORLEANS INTL (MSY)

RNP AR APCH - GPS.		MALS 	MISSED APPROACH: Climb to 2000 on track 197° to POLIY and track 109° to SAFES and hold.	
▼ For uncompensated Baro-VNAV systems, procedure NA below -1°C or above 54°C. For inop ALS, increase RNP 0.30 all Cats visibility to RVR 6000.				
D-ATIS 127.55	NEW ORLEANS APP CON WEST 125.5 350.35 EAST 133.15 290.3	NEW ORLEANS TOWER 119.5 254.3	GND CON 121.9 273.525	CLNC DEL 120.925
				CPDLC



2000	tr 197°	POLIY	tr 109°	SAFES	RAYOP	4000
					JASPO	2000
						197°
						2000
						GP 3.00° TCH 52
						6.1 NM
						7 NM
CATEGORY	A	B	C	D		
RNP 0.11 DA		363/40	364 (400-¾)			
RNP 0.30 DA		414/50	415 (500-1)			

AUTHORIZATION REQUIRED

SC-4, 23 JAN 2025 to 20 FEB 2025

SC-4, 23 JAN 2025 to 20 FEB 2025