

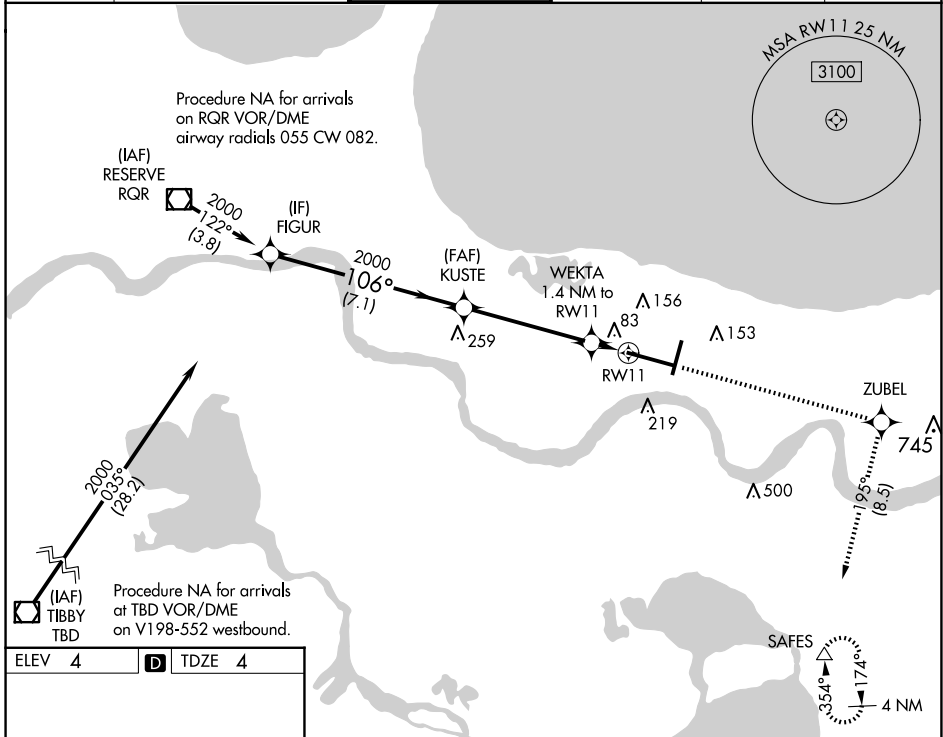
WAAS CH 61319 W11A	APP CRS 106°	Rwy Idg TDZE Apt Elev	9800 4 4
---------------------------------	------------------------	-----------------------------	-------------------------------------

RNAV (GPS) Y RWY 11

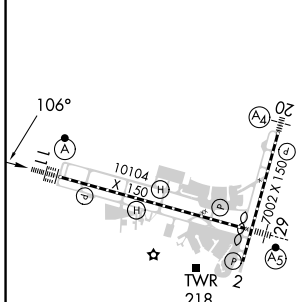
LOUIS ARMSTRONG NEW ORLEANS INTL (MSY)

RNP APCH - GPS.	ALSF-2	MISSED APPROACH: Climb to 2000 direct ZUBEL and on track 195° to SAFES and hold.
<p>▼ For uncompensated Baro-VNAV systems, LNAV/VNAV NA below -1°C or above 54°C. For inop ALSF-2, increase LNAV/VNAV all Cats visibility to RVR 4000.</p>		

D-ATIS 127.55	NEW ORLEANS APP CON WEST 125.5 350.35 EAST 133.15 290.3	NEW ORLEANS TOWER 119.5 254.3	GND CON 121.9 273.525	CLNC DEL 120.925	CPDLC
-------------------------	---	---	---------------------------------	----------------------------	-------



ELEV 4	D	TDZE 4
--------	----------	--------



RLLS Rwy 2
TDZ/CL Rwy 11
HIRL All Runways

VGSi and RNAV glidepath not coincident (VGSi Angle 2.80/TCH 73).			
FIGUR 2000 106°	KUSTE 2000	ZUBEL 2000 tr 195°	SAFES △
WEKTA 1.4 NM to RWY 11		RWY 11	
GP 3.00° TCH 55		500	
7.1 NM		4.7 NM	
1.4 NM		4 NM	
CATEGORY	A	B	D
LPV DA	204/18 200 (200-½)		
LNAV/VNAV DA	254/24 250 (300-½)		
LNAV MDA	340/24	336 (400-½)	340/26 336 (400-½)
C CIRCLING	520-1	516 (600-1)	580-1½ 576 (600-1½) 600-2 596 (600-2)

SC-4, 23 JAN 2025 to 20 FEB 2025

SC-4, 23 JAN 2025 to 20 FEB 2025