

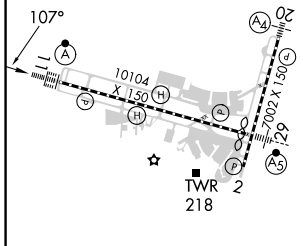
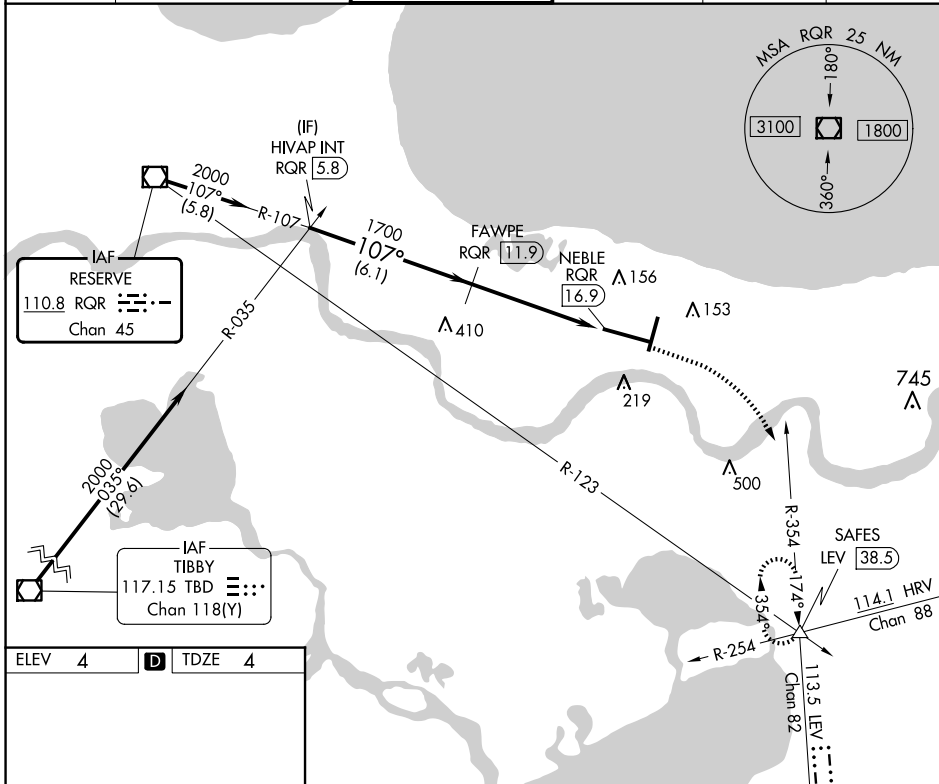
VOR/DME RQR	APP CRS	Rwy Idg	9800
110.8	107°	TDZE	4
Chan 45		Apt Elev	4

VOR/DME RWY 11

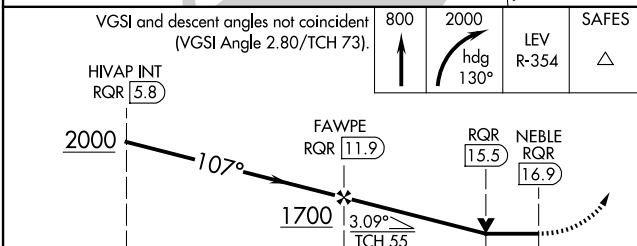
LOUIS ARMSTRONG NEW ORLEANS INTL (MSY)

	MISSED APPROACH: Climb to 800 then climbing right turn to 2000 on heading 130° and LEV VORTAC R-354 to SAFES INT/LEV 38.5 DME and hold.			

D-ATIS	NEW ORLEANS APP CON	NEW ORLEANS TOWER	GND CON	CLNC DEL	CPDLC
127.55	WEST 125.5 350.35 EAST 133.15 290.3	119.5 254.3	121.9 273.525	120.925	



ELEV 4	D	TDZE 4
RLLS Rwy 2 TDZ/CL Rwy 11 HIRL All Runways		



VGSIs and descent angles not coincident (VGSi Angle 2.80/TCH 73). HIVAP INT RQR 5.8	800 ↑	2000 hdg 130°	LEV R-354 △
CATEGORY	A	B	C
S-11	460/24 456 (500-1/2)		
C CIRCLING	520-1	516 (600-1)	580-1 1/2 576 (600-1 1/2)
			600-2 596 (600-2)

SC-4, 23 JAN 2025 to 20 FEB 2025

SC-4, 23 JAN 2025 to 20 FEB 2025