

|   |                        |   |
|---|------------------------|---|
| LOC/DME I-TLK<br><b>111.5</b><br>Chan <b>52</b> | APP CRS<br><b>134°</b> | Rwy ldg <b>9093</b><br>TDZE <b>13</b><br>Apt Elev <b>13</b> |
|---|------------------------|---|

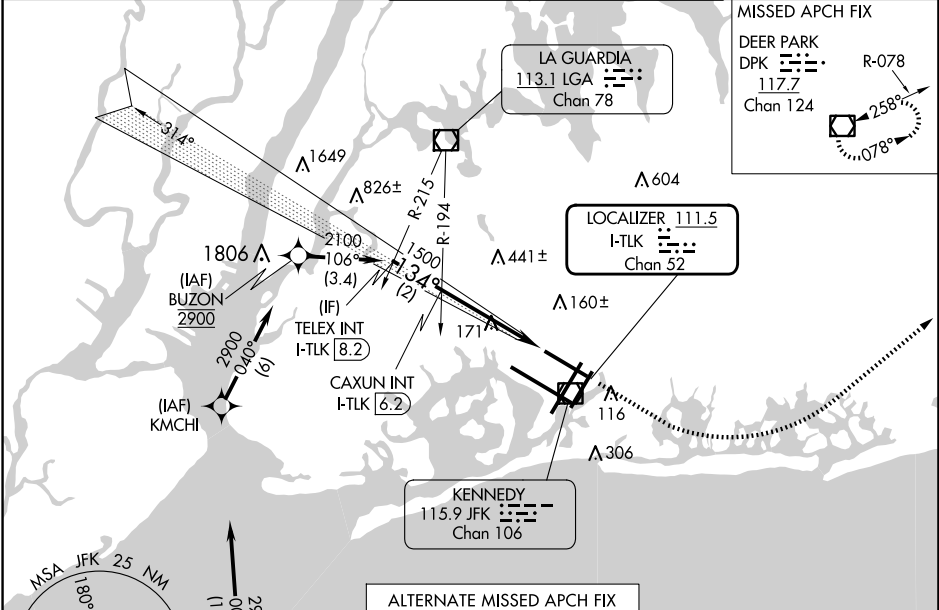
# ILS RWY 13L (CAT II)

JOHN F KENNEDY INTL (JFK)

RNAV 1-GPS or RADAR required for procedure entry.  
From COVIR, KMCHI, BUZON: RNAV-1 GPS required.

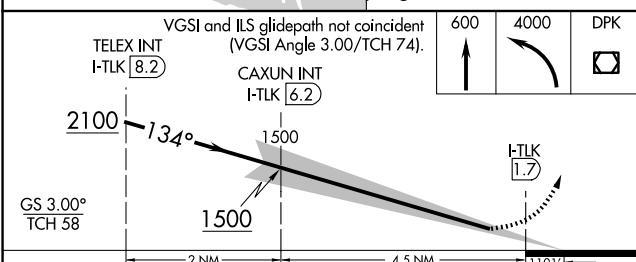
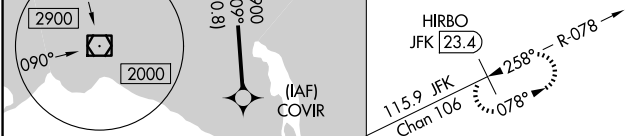
ALSF-2  
MISSED APPROACH: Climb to 600 then climbing left turn to 4000 direct DPK VOR/DME and hold.

|   |  |   |                               |                                 |       |
|---|--|---|-------------------------------|---------------------------------|-------|
| D-ATIS<br>(ARR/DEP) (ARR-NE) (ARR-SW)<br><b>128.725 117.7 115.4</b> | NEW YORK APP CON<br><b>128.125 269.0</b> | KENNEDY TOWER<br>Rwys 4R/22L and 13L/31R <b>119.1 281.55</b><br>Rwys 4L/22R and 13R/31L <b>123.9 281.55</b> | GND CON<br><b>121.9 348.6</b> | CLNC DEL<br><b>135.05 348.6</b> | CPDLC |
|---|--|---|-------------------------------|---------------------------------|-------|



NE-2, 23 JAN 2025 to 20 FEB 2025

NE-2, 23 JAN 2025 to 20 FEB 2025



|           |                      |   |   |   |
|-----------|----------------------|---|---|---|
| CATEGORY  | A                    | B | C | D |
| S-ILS 13L | RA 150/16 150 DA 163 |   |   |   |

## CATEGORY II ILS - SPECIAL AIRCREW & AIRCRAFT CERTIFICATION REQUIRED

