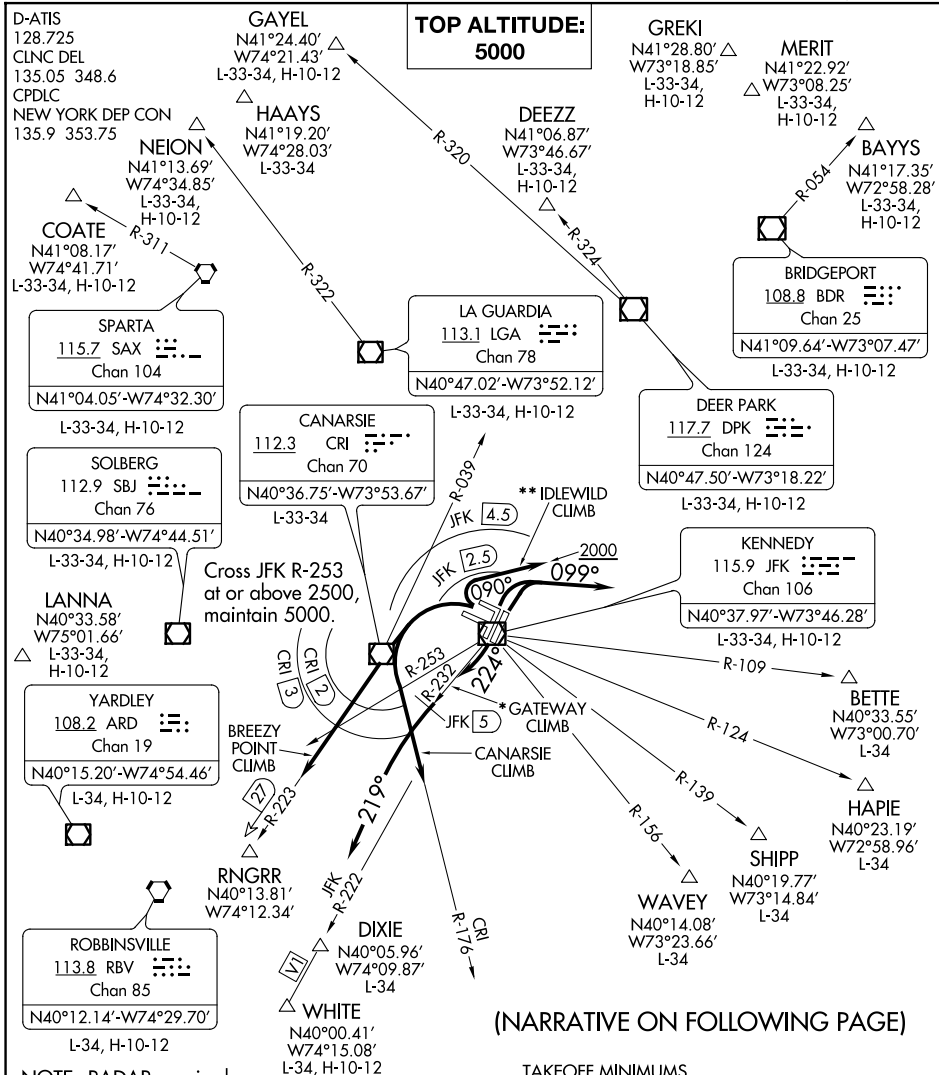


KENNEDY FIVE DEPARTURE

AL-610 (FAA)

JOHN F KENNEDY INTL (JFK)
NEW YORK, NEW YORK



(NARRATIVE ON FOLLOWING PAGE)

NOTE: RADAR required.

NOTE: BAYYS departures expect vectors to BDR VOR/DME or BDR R-054.

NOTE: BETTE departures expect vectors to JFK R-109.

NOTE: COATE departures expect vectors to SAX VORTAC or SAX R-311.

NOTE: DIXIE departures expect vectors to JFK R-222.

NOTE: HAPIE departures expect vectors to JFK R-124.

NOTE: RBV departures expect vectors to RBV after RNGRR.

NOTE: SHIPP departures expect vectors to JFK R-139.

NOTE: WAVEY departures expect vectors to JFK R-156.

NOTE: WHITE departures expect vectors to V1.

TAKEOFF MINIMUMS

Rwys 4L/R, 13L/R, 22L/R, 31L/R: Standard.

*NOTE: DME required. To be assigned during the period of 2200-0700 local.

**NOTE: To be assigned to non-turbojet aircraft. If unable to remain within JFK 2.5 DME, advise ATC.

NOTE: Chart not to scale.

NE-2, 23 JAN 2025 to 20 FEB 2025

NE-2, 23 JAN 2025 to 20 FEB 2025



DEPARTURE ROUTE DESCRIPTION

TAKEOFF RUNWAYS 4L/R: Climbing right turn heading 099°, thence

TAKEOFF RUNWAYS 13L/R: Climb on assigned heading, thence

TAKEOFF RUNWAYS 22L/R: Climb heading 224°, thence

* GATEWAY CLIMB: Climbing right turn to intercept the JFK R-232 until 5 DME, then turn left heading 219°, thence

TAKEOFF RUNWAYS 31L/R:

BREEZY POINT CLIMB: Climbing left turn direct CRI VOR/DME. Make turn east of CRI R-039 (remain within JFK 4.5 DME), then via CRI R-223 to RNGRR/CRI 27 DME. Cross CRI 3 DME or JFK R-253 at or above 2500, thence

CANARSIE CLIMB: Climbing left turn direct CRI VOR/DME. Make turn east of CRI R-039 (remain within JFK 4.5 DME), then via CRI R-176. Cross CRI 2 DME or JFK R-253 at or above 2500, thence

** IDLEWILD CLIMB: Climbing right turn to 2000 heading 090° (remain within JFK 2.5 DME), thence

. . . . via RADAR vectors to assigned route/fix, maintain 5000. Expect clearance to filed altitude/flight level ten (10) minutes after departure.

NE-2, 23 JAN 2025 to 20 FEB 2025

NE-2, 23 JAN 2025 to 20 FEB 2025