

# RNAV (RNP) Z RWY 22L

JOHN F KENNEDY INTL (JFK)

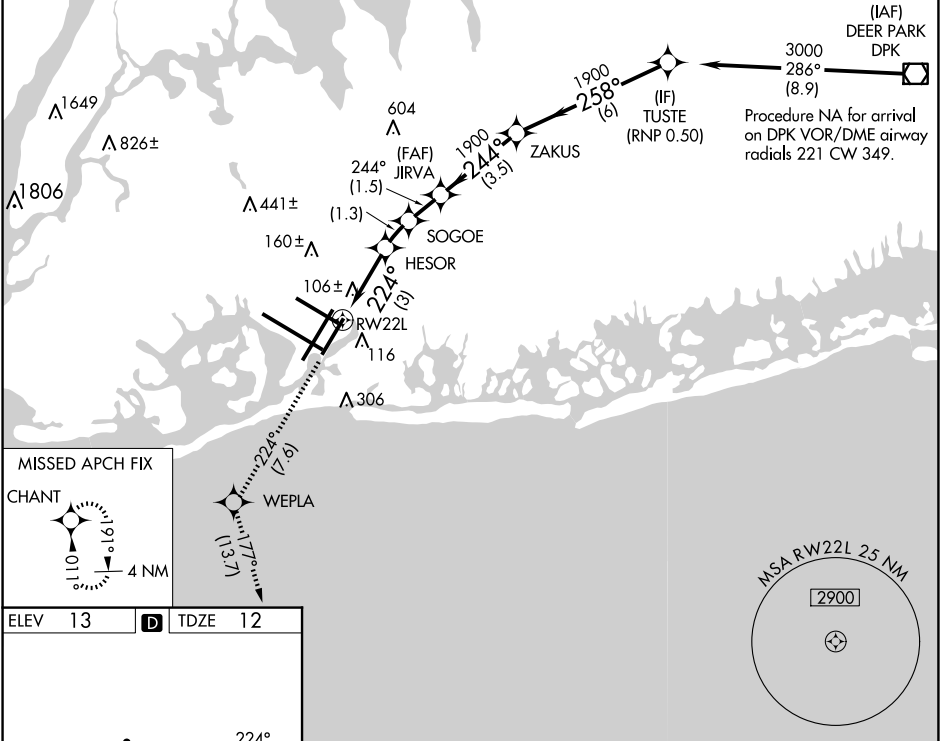
APP CRS	Rwy Idg	<b>8400</b>
<b>224°</b>	TDZE	<b>12</b>
	Apt Elev	<b>13</b>

RF required. RNP AR APCH.

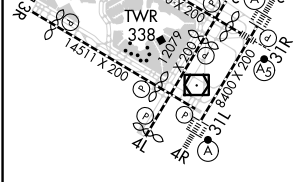
▼ For uncompensated Baro-VNAV systems, procedure NA below -12°C (11°F) or above 54°C (130°F). Simultaneous approach authorized. Use of FD or AP providing RNAV track guidance required during simultaneous operations. For inop ALS, increase RNP 0.20 all Cats visibility to RVR 5500, increase RNP 0.30 all Cats visibility to RVR 6000.

ALSF-2	MISSED APPROACH: Climb to 3000 on track 224° to WEPLA and on track 177° to CHANT and hold.

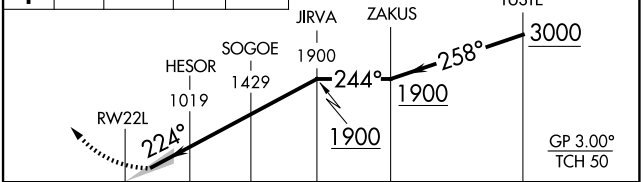
D-ATIS	NEW YORK APP CON	KENNEDY TOWER		GND CON	CLNC DEL	CPDLC
(ARR/DEP) (ARR-NE) (ARR-SW)	<b>128.125 117.7 115.4</b>	Rwys 4R/22L and 13L/31R	<b>119.1 281.55</b>	<b>121.9</b>	<b>135.05</b>	
		Rwys 4L/22R and 13R/31L	<b>123.9 281.55</b>	<b>348.6</b>	<b>348.6</b>	



ELEV	<b>13</b>	<b>D</b>	TDZE	<b>12</b>
------	-----------	----------	------	-----------



3000	↑ tr 224°	WEPLA	↑ tr 177°	CHANT	VGSI and RNAV glidepath not coincident (VGSI Angle 3.00/TCH 66).
------	-----------	-------	-----------	-------	------------------------------------------------------------------



CATEGORY	A	B	C	D
RNP 0.20 DA		361/40	349 (400-¾)	
RNP 0.30 DA		421/40	409 (500-¾)	

## AUTHORIZATION REQUIRED

NE-2, 23 JAN 2025 to 20 FEB 2025

NE-2, 23 JAN 2025 to 20 FEB 2025