

RNAV (RNP) Z RWY 31R

JOHN F KENNEDY INTL (JFK)

| | | |
|-------------|----------|-------------|
| APP CRS | Rwy Idg | 8486 |
| 314° | TDZE | 12 |
| | Apt Elev | 13 |

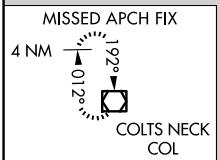
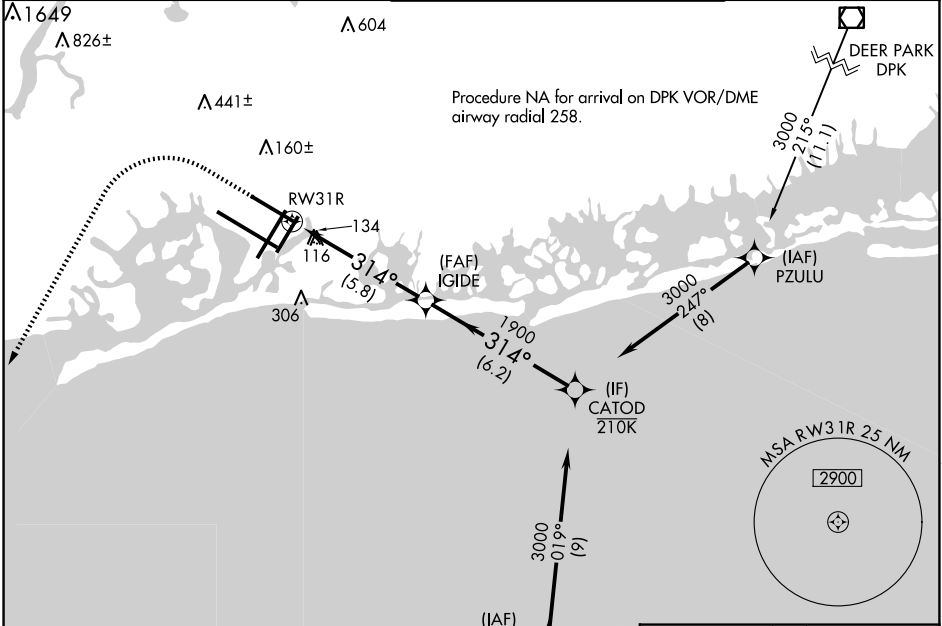
RNP AR APCH.

▼ For uncompensated Baro-VNAV systems, procedure NA below -12°C or above 54°C. Simultaneous approach authorized. Use of FD or AP required during simultaneous operations.

MALSR

MISSED APPROACH: Climb to 1800 then climbing left turn to 4000 direct COL VOR/DME and hold.

| | | | | | | |
|---------------------------------------|----------------------|--|---------------------|--------------------|---------------------|-------|
| D-ATIS (ARR/DEP) (ARR-NE) (ARR-SW) | NEW YORK APP CON | KENNEDY TOWER Rwys 4R/22L and 13L/31R | | GND CON | CLNC DEL | CPDLC |
| 128.725 117.7 115.4 | 128.125 269.0 | 119.1 281.55 | 123.9 281.55 | 121.9 348.6 | 135.05 348.6 | |
| 128.725 117.7 115.4 | | Rwys 4L/22R and 13R/31L | | | | |

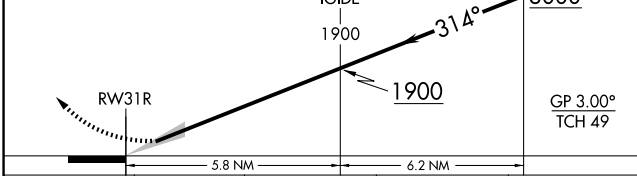


1800

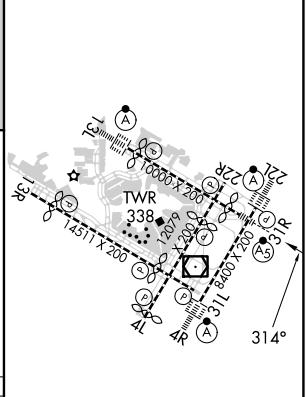
4000

COL

VGSI and RNAV glidepath not coincident (VGSI Angle 3.00/TCH 54).



| | | | | |
|------|----|---|------|----|
| ELEV | 13 | D | TDZE | 12 |
|------|----|---|------|----|



| | | | | |
|-------------|---|--------|-------------|---|
| CATEGORY | A | B | C | D |
| RNP 0.30 DA | | 458/50 | 446 (500-1) | |

AUTHORIZATION REQUIRED

RLS Rwys 13L and 13R

HIRL all Rwys

TDZ/CL Rwys 4L, 4R, 13L, 22L and 31R

NE-2, 23 JAN 2025 to 20 FEB 2025

NE-2, 23 JAN 2025 to 20 FEB 2025