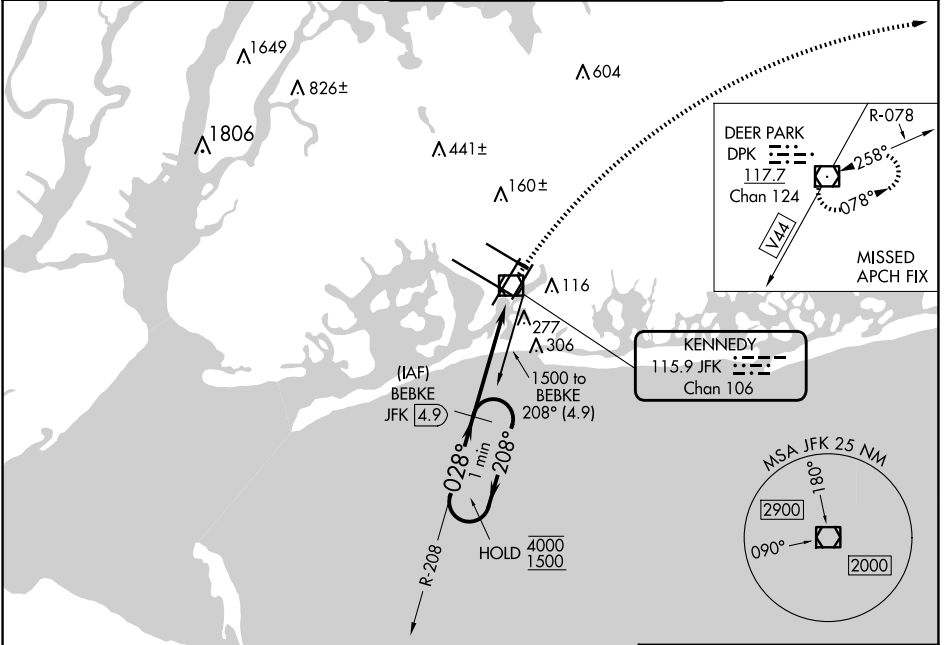


VOR/DME JFK <b>115.9</b> Chan <b>106</b>	APP CRS <b>028°</b>	Rwy Idg <b>8400</b> TDZE <b>12</b> Apt Elev <b>13</b>
--	------------------------	---

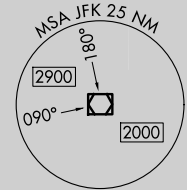
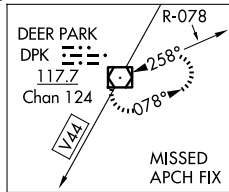
# VOR RWY 4R

JOHN F KENNEDY INTL (JFK)

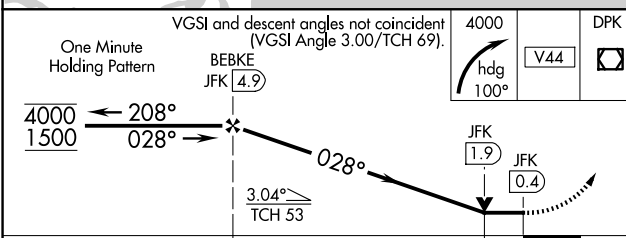
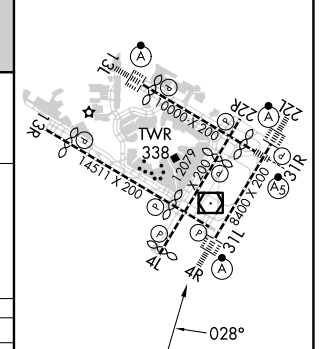
DME or RADAR required for procedure entry.		ALSIF-2 	MISSED APPROACH: Climbing right turn to 4000 on heading 100° and V44 to DPK VOR/DME and hold.		
D-ATIS (ARR/DEP) (ARR-NE) (ARR-SW) <b>128.725 117.7 115.4</b>	NEW YORK APP CON <b>128.125 269.0</b>	KENNEDY TOWER Rwys 4R/22L and 13L/31R <b>119.1 281.55</b> Rwys 4L/22R and 13R/31L <b>123.9 281.55</b>	GND CON <b>121.9 348.6</b>	CLNC DEL <b>135.05 348.6</b>	CPDLC



KENNEDY  
115.9 JFK  
Chan 106



ELEV 13	<b>D</b> TDZE 12
RLLS Rwys 13L and 13R HIRL all Rwys TDZ/CL Rwys 4L, 4R, 13L, 22L and 31R	



CATEGORY	A	B	C	D
S-4R	540/24	528 (600-1/2)	540/50 528 (600-1)	540/60 528 (600-1 1/4)
<b>C</b> CIRCLING	640-1	627 (700-1)	680-1 3/4 667 (700-1 3/4)	680-2 667 (700-2)

FAF to MAP 4.4 NM					
Knots	60	90	120	150	180
Min:Sec	4:24	2:56	2:12	1:46	1:28

NE-2, 23 JAN 2025 to 20 FEB 2025

NE-2, 23 JAN 2025 to 20 FEB 2025