

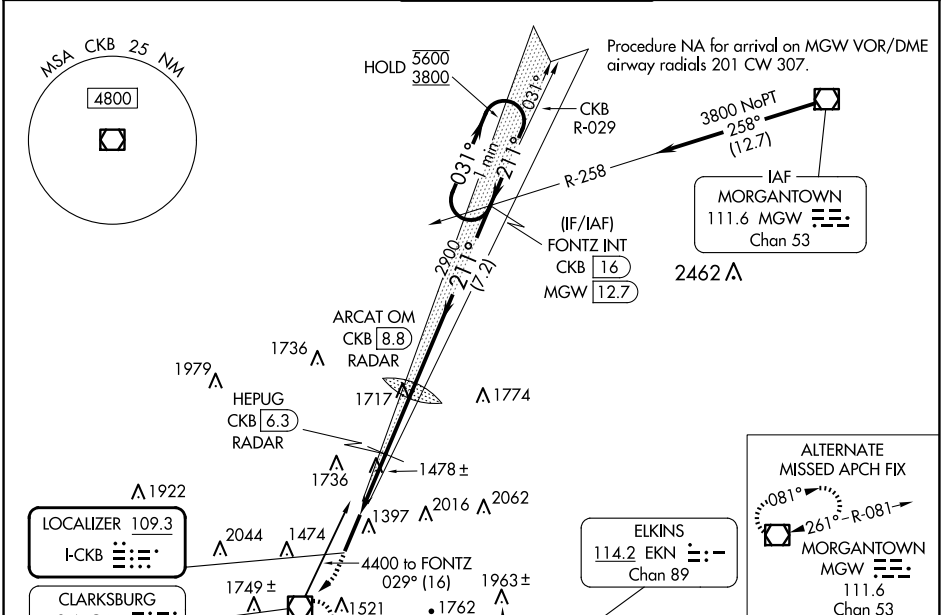
LOC I-CKB 109.3	APP CRS 211°	Rwy Ldg TDZE Apt Elev	7130 1224 1224
---------------------------	------------------------	-----------------------------	---

ILS or LOC RWY 21

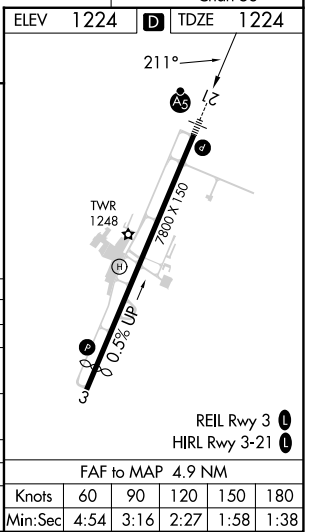
NORTH CENTRAL WEST VIRGINIA (CKB)

<p>For inop ALS, increase S-LOC 21 Cat C/D visibility to 2½ SM, and HEPUG fix minimums Cat C/D visibility to 1½ SM. DME from CKB VOR/DME. Autopilot coupled approach NA below 2000.</p>	<p>MALSR</p>	<p>MISSED APPROACH: Climb to 1800 then climbing right turn to 3200 direct CKB VOR/DME and hold, continue climb-in-hold to 3200.</p>

ATIS 127.825	CLARKSBURG APP CON ★ 121.15 284.65	CLARKSBURG TOWER ★ 126.7 (CTAF) 0 257.925	GND CON 121.9	UNICOM 123.0
------------------------	--	---	-------------------------	------------------------



ELEV 1224	TDZE 1224			
1800	3200			
CKB	HEPUG CKB 6.3 RADAR			
ARC AT OM CKB 8.8 RADAR	FONTZ INT CKB 16			
One Minute Holding Pattern	031° → 5600			
*LOC only.	*CKB 5.3			
2878	211°			
2900	211°			
*2020	GS 3.00° TCH 60			
1.4 NM	1 NM			
2.5 NM	7.2 NM			
CATEGORY	A	B	C	D
S-ILS 21		1424/24	200 (200-½)	
S-LOC 21	2020/24 796 (800-½)	2020/40 796 (800-¾)	2020-1¾	796 (800-1¾)
CIRCLING	2020-1 796 (800-1)	2040-1¼ 816 (900-1¼)	2320-3	1096 (1100-3)
HEPUG FIX MINIMUMS (DME or RADAR REQUIRED)				
S-LOC 21	1740/24	516 (600-½)	1740/55	516 (600-1)
CIRCLING	1940-1 716 (800-1)	2040-1¼ 816 (900-1¼)	2320-3	1096 (1100-3)



NE-4, 23 JAN 2025 to 20 FEB 2025

NE-4, 23 JAN 2025 to 20 FEB 2025