

VOR/DME CKB 112.6 Chan 73	APP CRS 042°	Rwy Idg TDZE Apt Elev N/A N/A 1224
---	------------------------	--

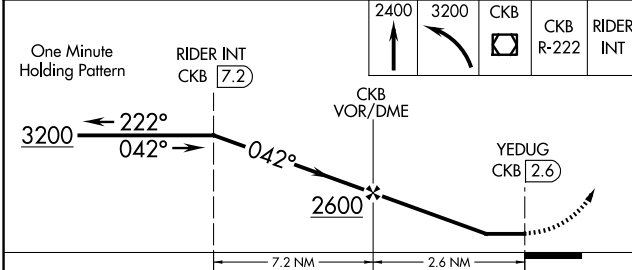
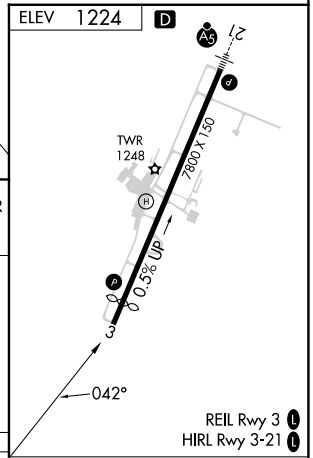
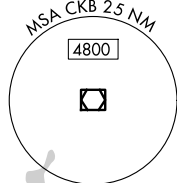
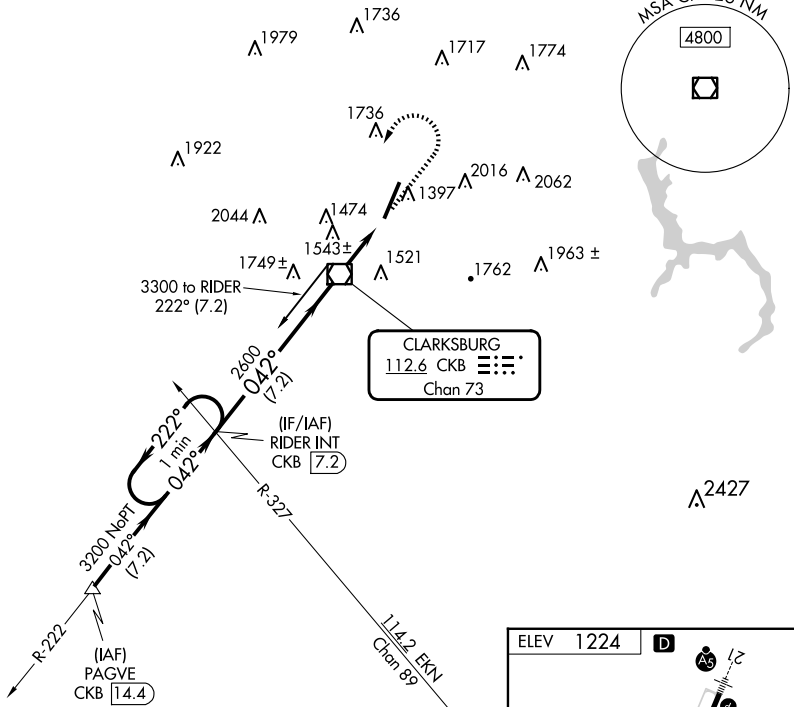
VOR-A

NORTH CENTRAL WEST VIRGINIA (CKB)

▼ When local altimeter setting not received, Use Morgantown altimeter
▲

MISSED APPROACH: Climb to 2400, then climbing left turn to 3200 direct CKB VOR/DME and via CKB VOR/DME R-222 to RIDER INT/CKB 7.2 DME and hold.

ATIS 127.825	CLARKSBURG APP CON* 121.15 284.65	CLARKSBURG TOWER* 126.7 (CTAF) 257.925	GND CON 121.9	UNICOM 123.0
------------------------	---	--	-------------------------	------------------------



CATEGORY	A	B	C	D	FAF to MAP 2.6 NM					
	1940-1 716 (800-1)	2040-1 ¼ 816 (900-1 ¼)	2320-3	1096 (1100-3)	Knots	60	90	120	150	180
C CIRCLING					Min:Sec	2:36	1:44	1:18	1:02	0:52

NE-4, 23 JAN 2025 to 20 FEB 2025

NE-4, 23 JAN 2025 to 20 FEB 2025