

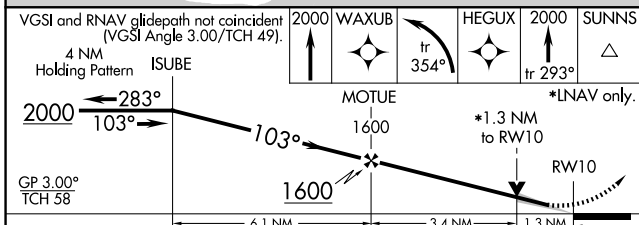
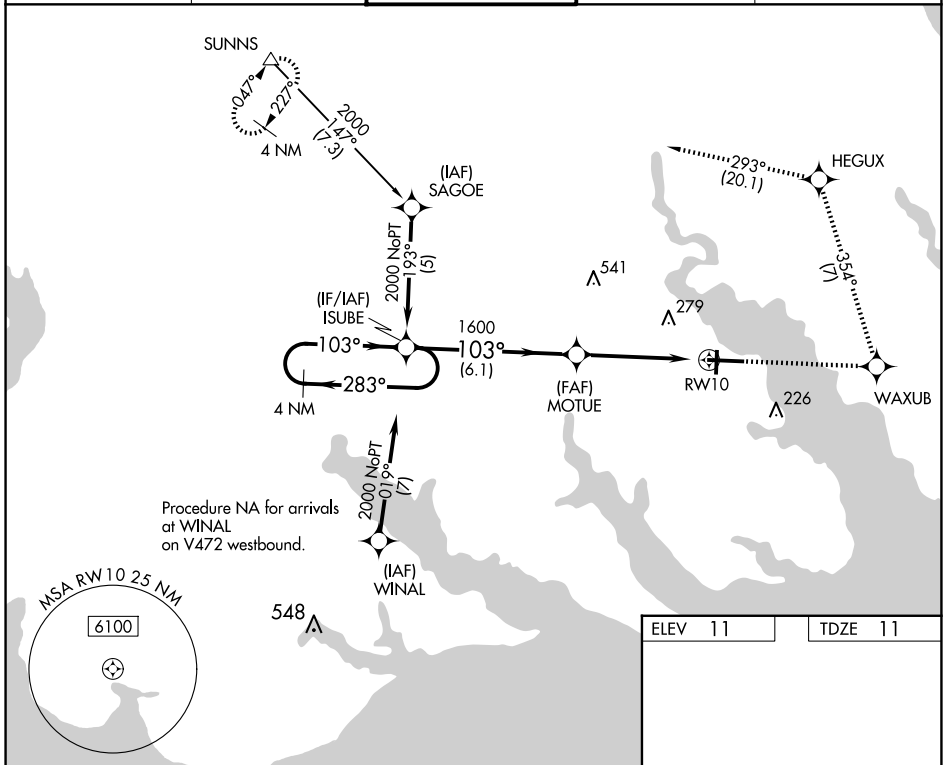
WAAS CH <b>65703</b> <b>W10A</b>	APP CRS <b>103°</b>	Rwy Idg <b>7219</b> TDZE <b>11</b> Apt Elev <b>11</b>
--	------------------------	---

# RNAV (GPS) RWY 10

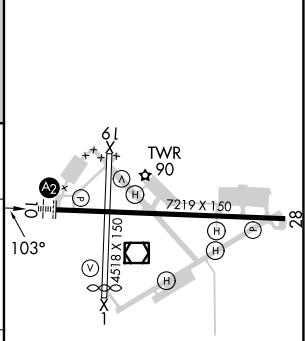
ELIZABETH CITY CG AIR STATION/RGNL (E/C)G

RNP APCH. ▼ Procedure NA when tethered balloon located approximately 2 miles southeast of airport is flying.	SALS A2	MISSED APPROACH: Climb to 2000 direct WAXUB and left turn on track 354° to HEGUX and 2000 on track 293° to SUNNS and hold.
---	------------	--

ASOS <b>124.375</b>	NORFOLK APP CON <b>119.55 269.425</b>	ELIZABETH CITY TOWER★ <b>120.5 (CTAF) 355.6</b>	GND CON <b>121.9</b>	UNICOM <b>122.95</b>
------------------------	--	--	-------------------------	-------------------------



ELEV 11	TDZE 11
---------	---------



CATEGORY	A	B	C	D
LPV DA	261-3/4		250 (300-3/4)	
LNAV MDA	460-1	449 (500-1)	460-1 3/8	449 (500-1 3/8)
CIRCLING	480-1	469 (500-1)	640-1 3/4 629 (700-1 3/4)	640-2 629 (700-2)

MIRL Rwy 1-19  
HIRL Rwy 10-28  
REIL Rws 10 and 28

SE-2, 23 JAN 2025 to 20 FEB 2025

SE-2, 23 JAN 2025 to 20 FEB 2025