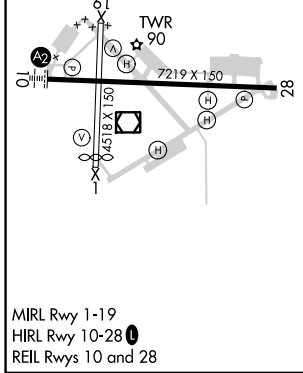
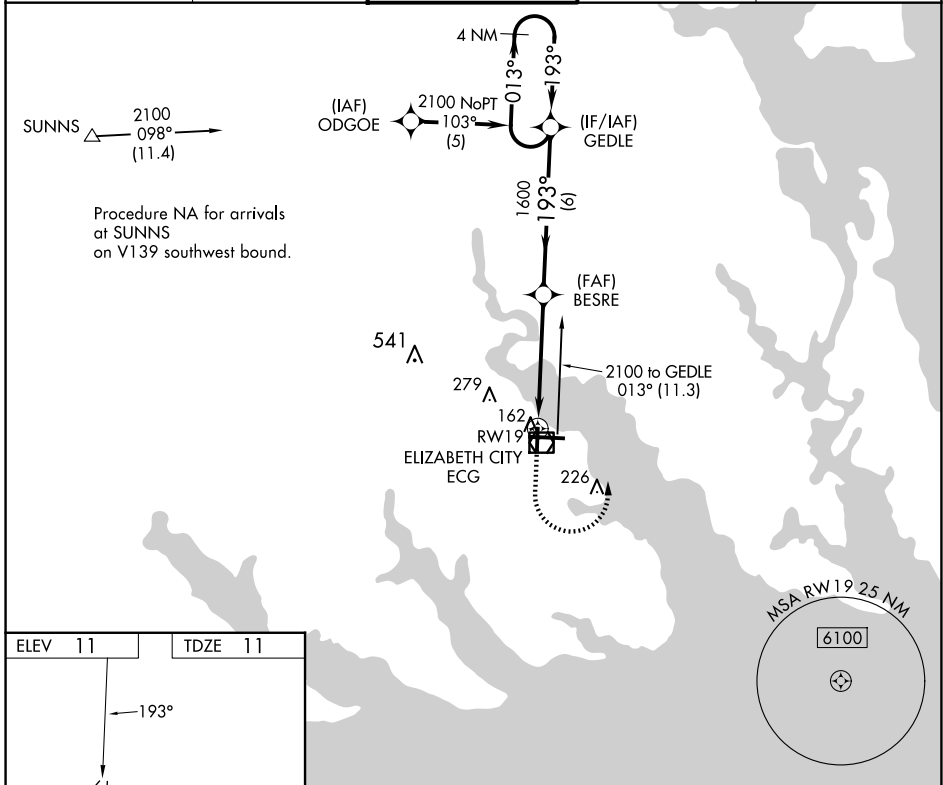


APP CRS	Rwy Idg	4518
193°	TDZE	11
	Apt Elev	11

RNAV (GPS) RWY 19

ELIZABETH CITY CG AIR STATION/RGNL (ECG)

RNP APCH.		MISSED APPROACH: Climb to 900 then climbing left turn to 2100 direct GEDLE and hold.		
ASOS	NORFOLK APP CON	ELIZABETH CITY TOWER★	GND CON	UNICOM
124.375	119.55 269.425	120.5(CTAF) 355.6	121.9	122.95



ELEV 11	TDZE 11	900		2100		GEDLE		VGSJ and descent angles not coincident (VGSJ Angle 2.75/TCH 30).		4 NM Holding Pattern	
		↑		↙		✦		↑		↔	
		1.5 NM to RWY 19		3.3 NM		6 NM		1600		013°	
		3.04° TCH 45								2100	
CATEGORY	A	B	C	D							
LNAV MDA	480-1	469 (500-1)	480-1 ³ / ₈	469 (500-1 ³ / ₈)							
C CIRCLING	480-1	469 (500-1)	640-1 ³ / ₄	629 (700-1 ³ / ₄)	640-2	629 (700-2)					

SE-2, 23 JAN 2025 to 20 FEB 2025

SE-2, 23 JAN 2025 to 20 FEB 2025