

APP CRS	Rwy Idg	<b>7219</b>
<b>283°</b>	TDZE	<b>10</b>
	Apt Elev	<b>11</b>

# RNAV (GPS) RWY 28

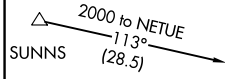
ELIZABETH CITY CG AIR STATION/RGNL (ECG)

RNP APCH.

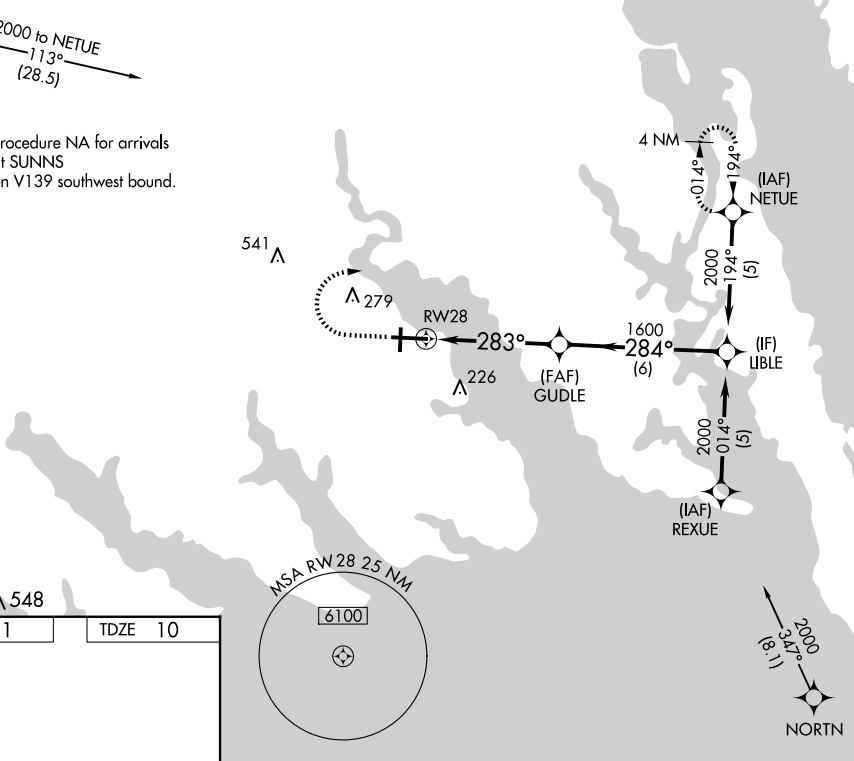
**▼** Rwy 28 helicopter visibility reduction below  $\frac{3}{4}$  SM NA. Procedure NA when tethered balloon located approximately 2 miles southeast of airport is flying.

MISSED APPROACH: Climb to 800 then climbing right turn to 2000 direct NETUE and hold.

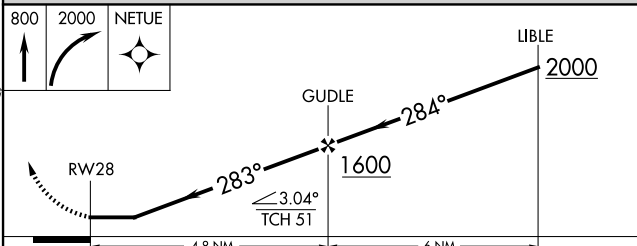
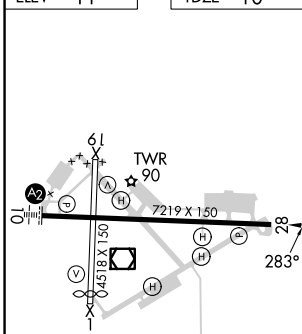
ASOS <b>124.375</b>	NORFOLK APP CON <b>119.55 269.425</b>	ELIZABETH CITY TOWER★ <b>120.5 (CTAF) 355.6</b>	GND CON <b>121.9</b>	UNICOM <b>122.95</b>
------------------------	--	--	-------------------------	-------------------------



Procedure NA for arrivals at SUNNS on V139 southwest bound.



ELEV	11	TDZE	10
------	----	------	----



CATEGORY	A	B	C	D
LNAV MDA	460-1	450 (500-1)	460-1 $\frac{3}{8}$	450 (500-1 $\frac{3}{8}$ )
<b>C</b> CIRCLING	480-1	469 (500-1)	640-1 $\frac{3}{4}$ 629 (700-1 $\frac{3}{4}$ )	640-2 629 (700-2)

MIRL Rwy 1-19  
HIRL Rwy 10-28  
REIL Rwy 10 and 28

SE-2, 23 JAN 2025 to 20 FEB 2025

SE-2, 23 JAN 2025 to 20 FEB 2025