

VOR/DME ECG <b>115.75</b> Chan <b>104</b> (Y)	APP CRS <b>270°</b>	Rwy Idg <b>7219</b> TDZE <b>10</b> Apt Elev <b>11</b>
---	------------------------	---

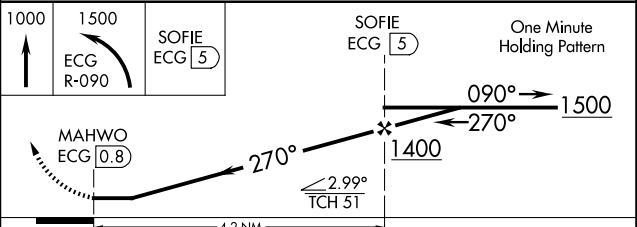
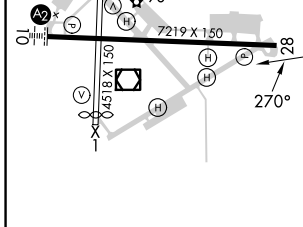
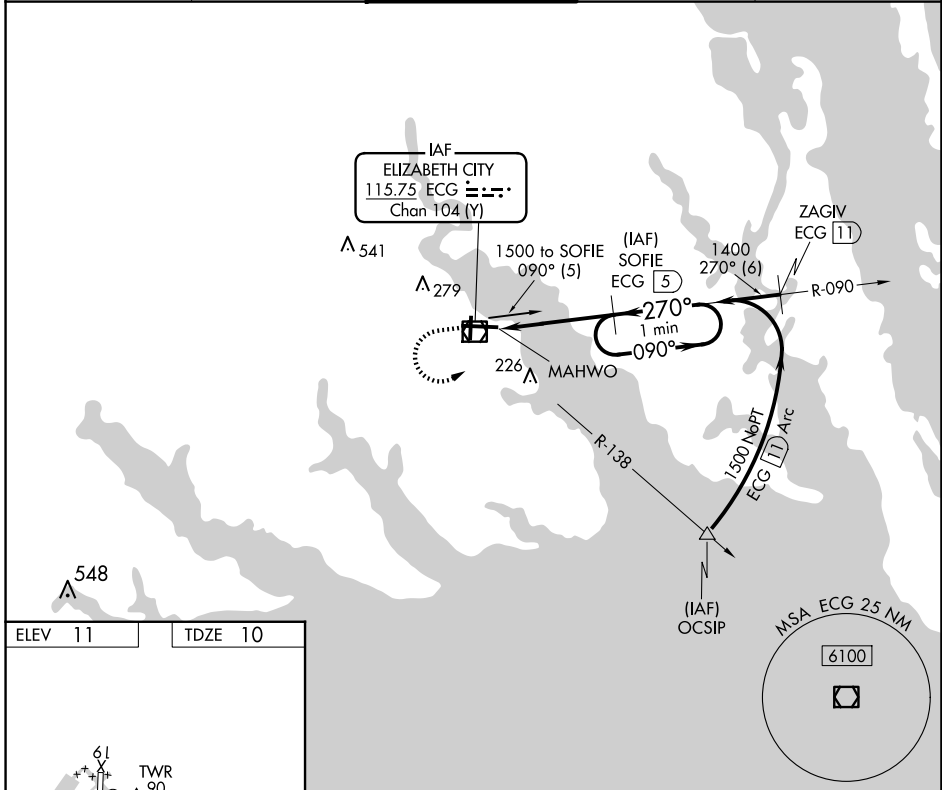
# VOR/DME RWY 28

ELIZABETH CITY CG AIR STATION/RGNL (ECG)

**Procedure NA** when tethered balloon located approximately 2 miles southeast of airport is flying. When local altimeter setting not received, use Currituck altimeter setting and increase all MDAs 40 feet and S-28 visibility Cats C/D ½ SM. Rwy 28 helicopter visibility reduction below ¾ SM NA.

**MISSED APPROACH:** Climb to 1000 then climbing left turn to 1500 via ECG R-090 to SOFIE 5 DME and hold.

ASOS <b>124.375</b>	NORFOLK APP CON <b>119.55 269,425</b>	ELIZABETH CITY TOWER★ <b>120.5</b> (CTAF) <b>355.6</b>	GND CON <b>121.9</b>	UNICOM <b>122.95</b>
------------------------	--	---	-------------------------	-------------------------



CATEGORY	A	B	C	D
S-28	380-1	370 (400-1)		380-1¼ 370 (400-1¼)
<b>C</b> CIRCLING	480-1	469 (500-1)	640-1¾ 629 (700-1¾)	640-2 629 (700-2)

SE-2, 23 JAN 2025 to 20 FEB 2025

SE-2, 23 JAN 2025 to 20 FEB 2025