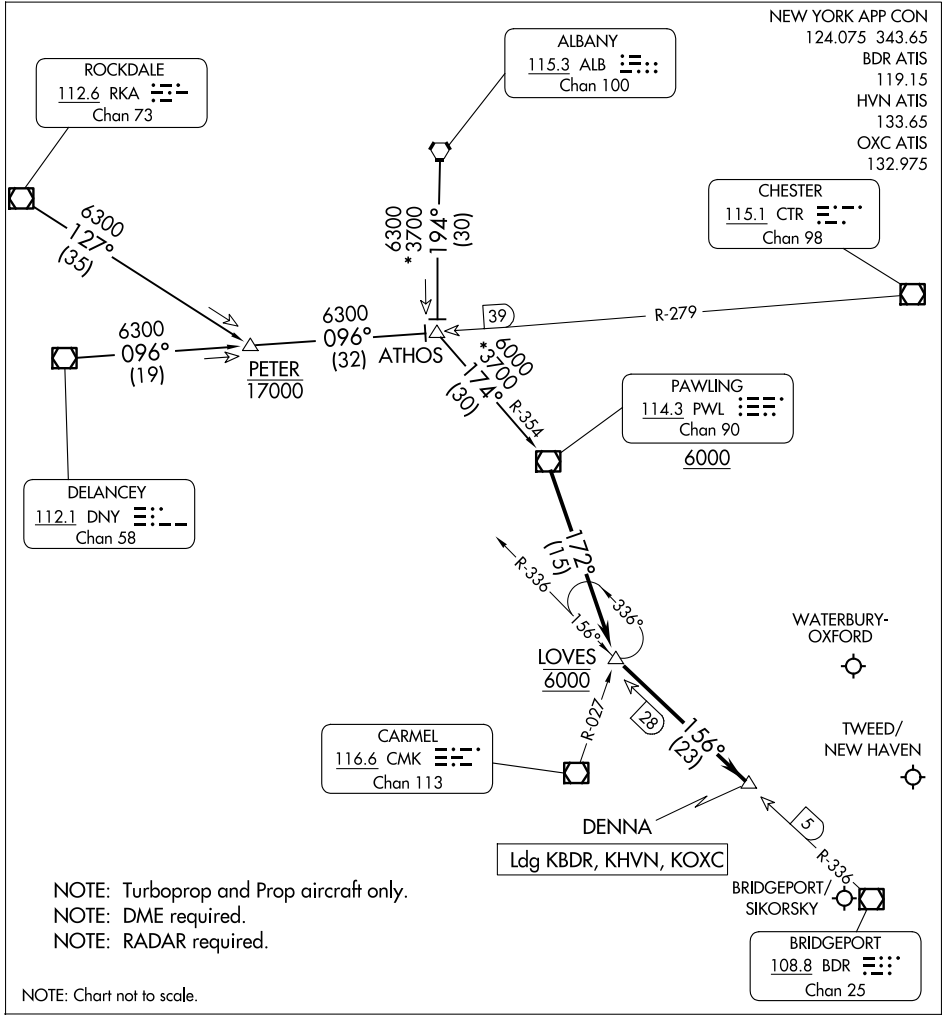


# DENNA THREE ARRIVAL

AL-621 (FAA)

BRIDGEPORT, CONNECTICUT

NEW YORK APP CON  
 124.075 343.65  
 BDR ATIS  
 119.15  
 HVN ATIS  
 133.65  
 OXC ATIS  
 132.975



NE-1, 23 JAN 2025 to 20 FEB 2025

NE-1, 23 JAN 2025 to 20 FEB 2025

- NOTE: Turboprop and Prop aircraft only.
- NOTE: DME required.
- NOTE: RADAR required.

NOTE: Chart not to scale.

## ARRIVAL ROUTE DESCRIPTION

**ALBANY TRANSITION (ALB.DENNA3):** From over ALB VORTAC on ALB R-194 to ATHOS, then on PWL R-354 to PWL VOR/DME, thence....

**DELANCEY TRANSITION (DNY.DENNA3):** From over DNY VOR/DME on DNY R-096 to ATHOS, then on PWL R-354 to PWL VOR/DME, thence....

**ROCKDALE TRANSITION (RKA.DENNA3):** From over RKA VOR/DME on RKA R-127 to PETER, then on DNY R-096 to ATHOS, then on PWL R-354 to PWL VOR/DME, thence....

....from PWL VOR/DME on PWL R-172 to cross LOVES at 6000, then on BRIDGEPORT (BDR) R-336 to DENNA. Expect RADAR vectors.

# DENNA THREE ARRIVAL

BRIDGEPORT, CONNECTICUT