

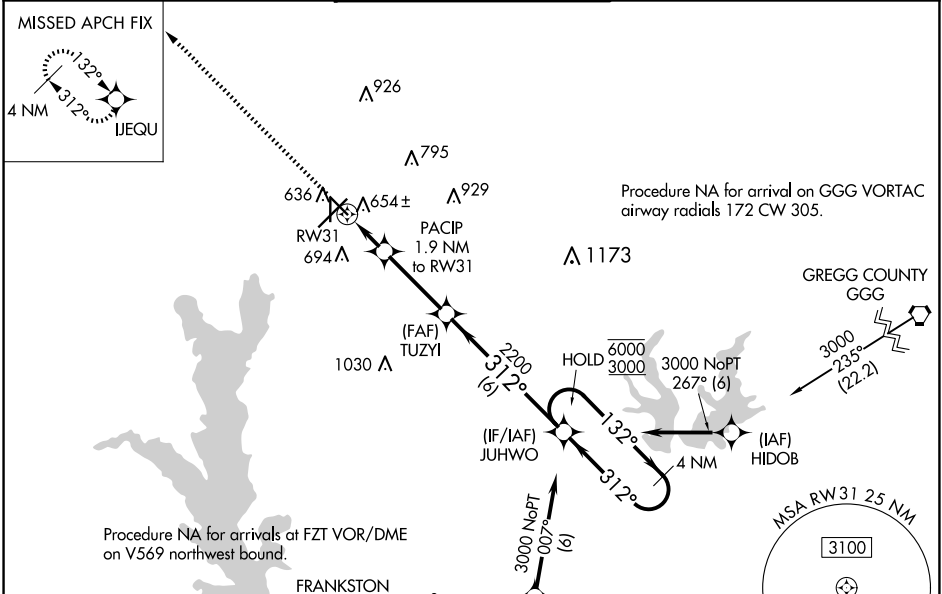
WAAS CH <b>61101</b> <b>W31A</b>	APP CRS <b>312°</b>	Rwy ldg TDZE <b>544</b> Apt Elev <b>544</b>
--	------------------------	---

# RNAV (GPS) RWY 31

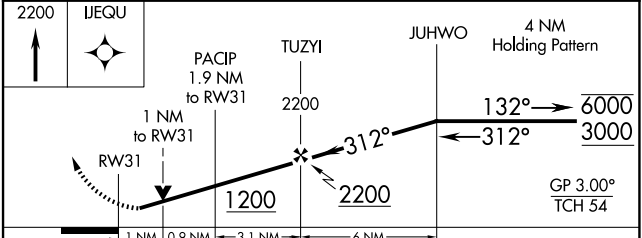
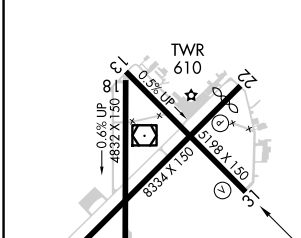
TYLER POUNDS RGNL (TYR)

RNP APCH - GPS.		MISSED APPROACH: Climb to 2200 direct IJEQU and hold.		
⚠ Rwy 31 helicopter visibility reduction below 3/4 SM NA. ⚠ For uncompensated Baro-VNAV systems, LNAV/VNAV NA below -8°C or above 54°C.				

ATIS <b>126.25</b>	LONGVIEW APP CON* <b>128.75 379.15</b>	POUNDS TOWER* <b>120.1 (CTAF) 257.8</b>	GND CON <b>121.9</b>	UNICOM <b>122.95</b>
-----------------------	---	--	-------------------------	-------------------------



ELEV <b>544</b>	<b>D</b>	TDZE <b>544</b>
-----------------	----------	-----------------



CATEGORY	A	B	C	D
LPV DA		794-1	250 (300-1)	
LNAV/VNAV DA		821-1	277 (300-1)	
LNAV MDA		920-1	356 (400-1)	
<b>C</b> CIRCLING	980-1 436 (500-1)	1020-1 476 (500-1)	1160-1 3/4 616 (700-1 3/4)	1280-2 1/4 736 (800-2 1/4)

REIL Rwy 22 **Ⓛ**  
MIRL Rwy 18-36 **Ⓛ**  
HIRL Rwy 4-22 and 13-31 **Ⓛ**

SC-2, 23 JAN 2025 to 20 FEB 2025

SC-2, 23 JAN 2025 to 20 FEB 2025